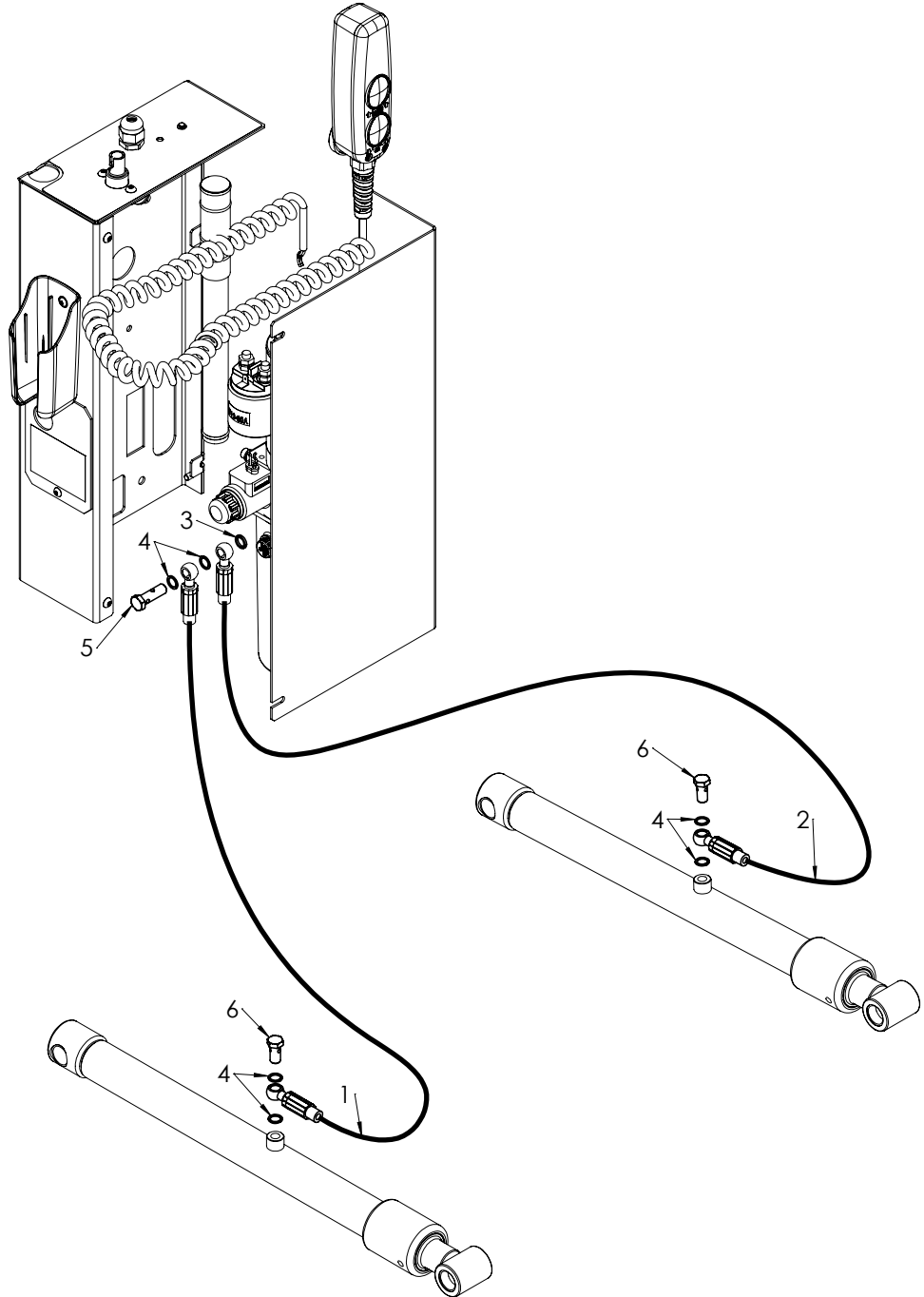
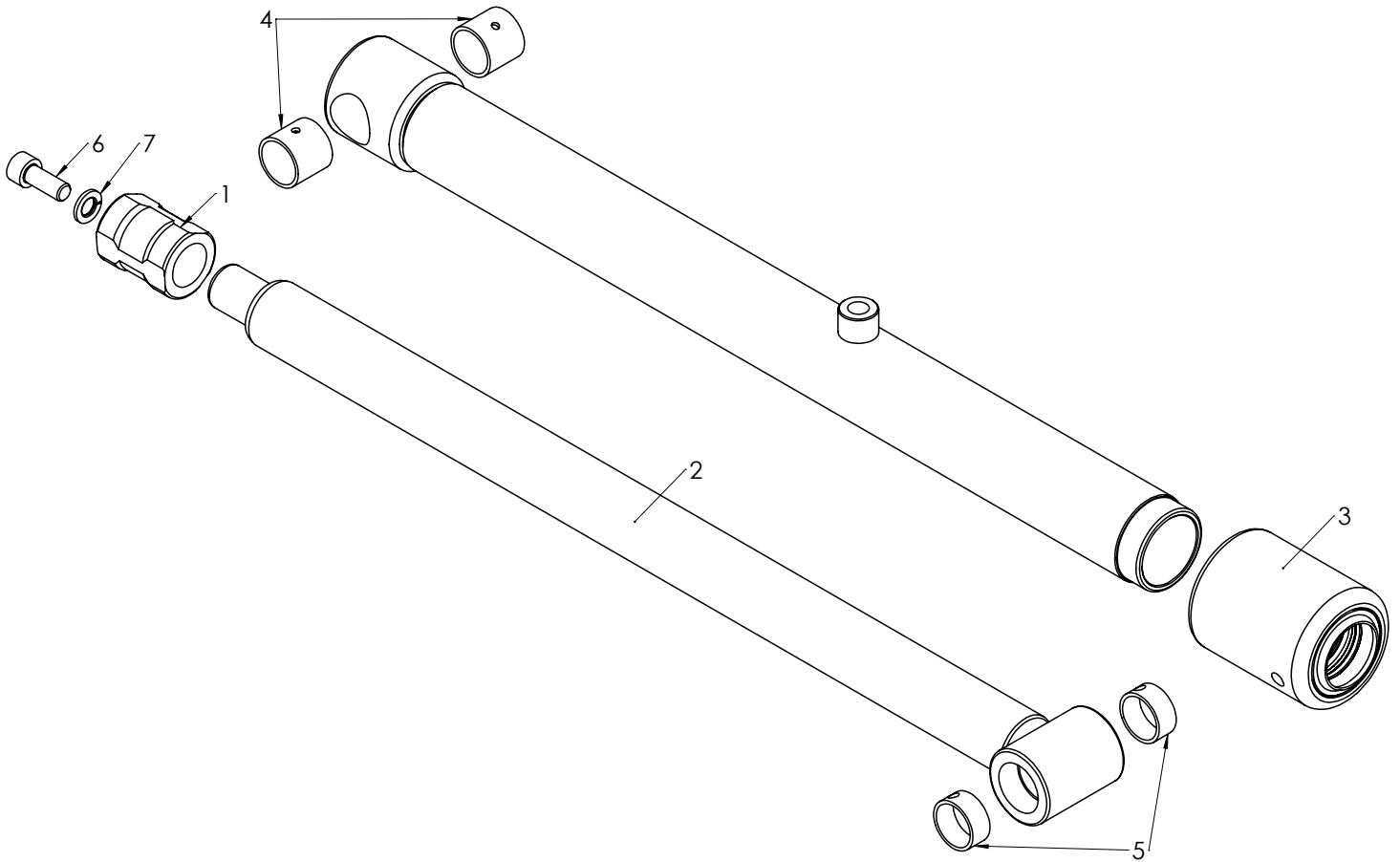


Pos	Code	Description
1	XQF.PH2	Frame PH2 + Snr
2	VRW074.R	Spring right Arm P20 ø7
3	VRW074.L	Spring left Arm P20 ø7
4	M6053	Side arm DH-P20
5	M6052.R	Upper arm right DH-P20
6	M6052.L	Upper arm left DH-P20
7	M6051.R	Lower arm right DH-P20
8	M6051.L	Lower arm left DH-P20
9	M6050.R	Arm right DH-P20
10	M6050.L	Arm left DH-P20
11	M6018	Plate cable guide M6006
12	M6017	Bearing bush cable guide P20
13	M6016	Steel cable compl. DH-P20
14	M6012	Lock platform DH-P20

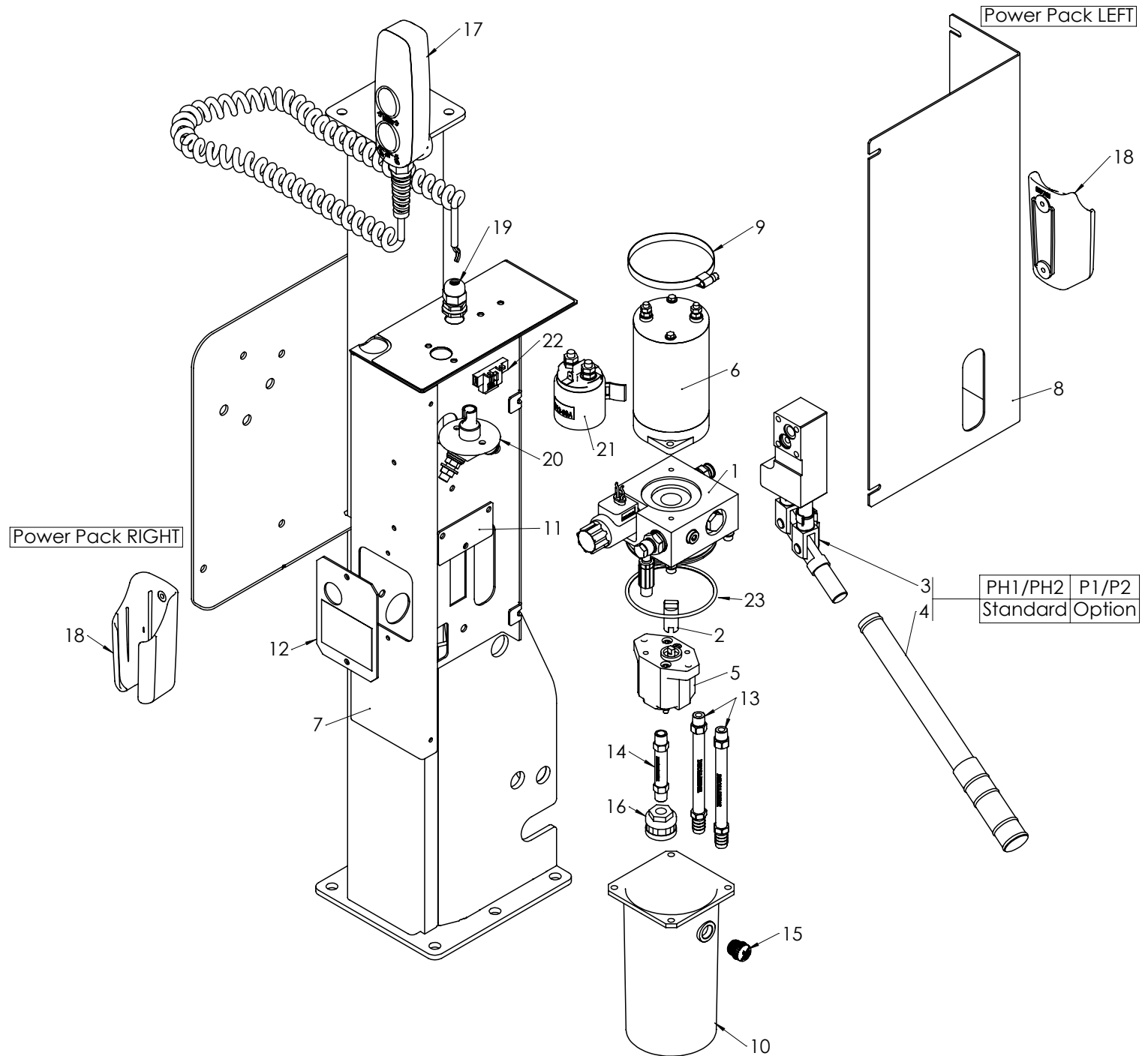
Pos	Code	Description
15	M6008	Cam DHP ø27
16	M6007	Spacer bush lock DHP
17	M6006	Cable guide ø4
18	M6004	End stop platform DHP
19	M6000	Protection cap lift arm DHP
20	M2501	Guide synthetic DH-C
21	M1908.25.1	Washer ø25/8.5x1mm
22	M1820.25T	Bearing bush ø20x25mm
23	M1820.10T	Bearing bush ø20x10mm
24	M1720.091	Pin ø20x91mm DH-P20
25	M1405	Closing cap rubber ø50
26	M0868.20	Rubber ring ø40x20mm
27	CH36	Lift cylinder CH36 + Snr
28	E0610.12	Platform lights DHP 12V



Pos	Code	Description
1	KSL1800.00	LP hose E-E 1800mm
2	KSL0800.00	LP hose E-E 800mm
3	K0700.10x2	Sealing ring 10x2mm
4	K0700.10x1	Sealing ring 10x1mm
5	K0112	Banjo double M10x1
6	K0110	Banjo simple M10x1



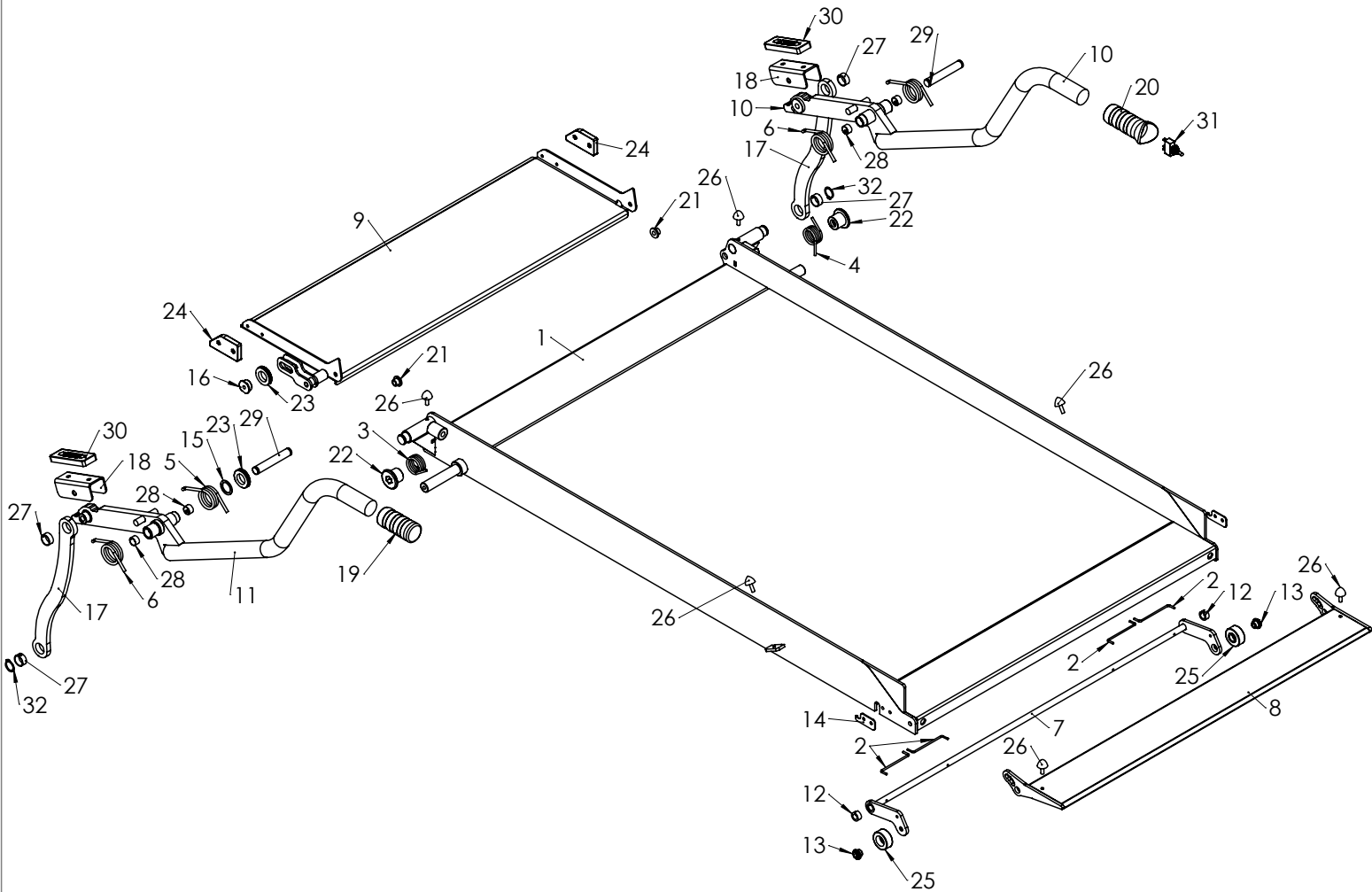
Pos	Code	Description
1	M4806	Guide VK/PK
2	M4630.472	Rod $\varnothing 30 \times 472$ (P20)
3	M4330.030	Sealing VK/PK
4	M1820.20T	Bearing bush $\varnothing 20 \times 20$ mm
5	M1820.10T	Bearing bush $\varnothing 20 \times 10$ mm
6	BI08.020	Allenbolt with head M8x20
7	BC08.2	Spring washer M8



PH1/PH2	P1/P2
Standard	Option

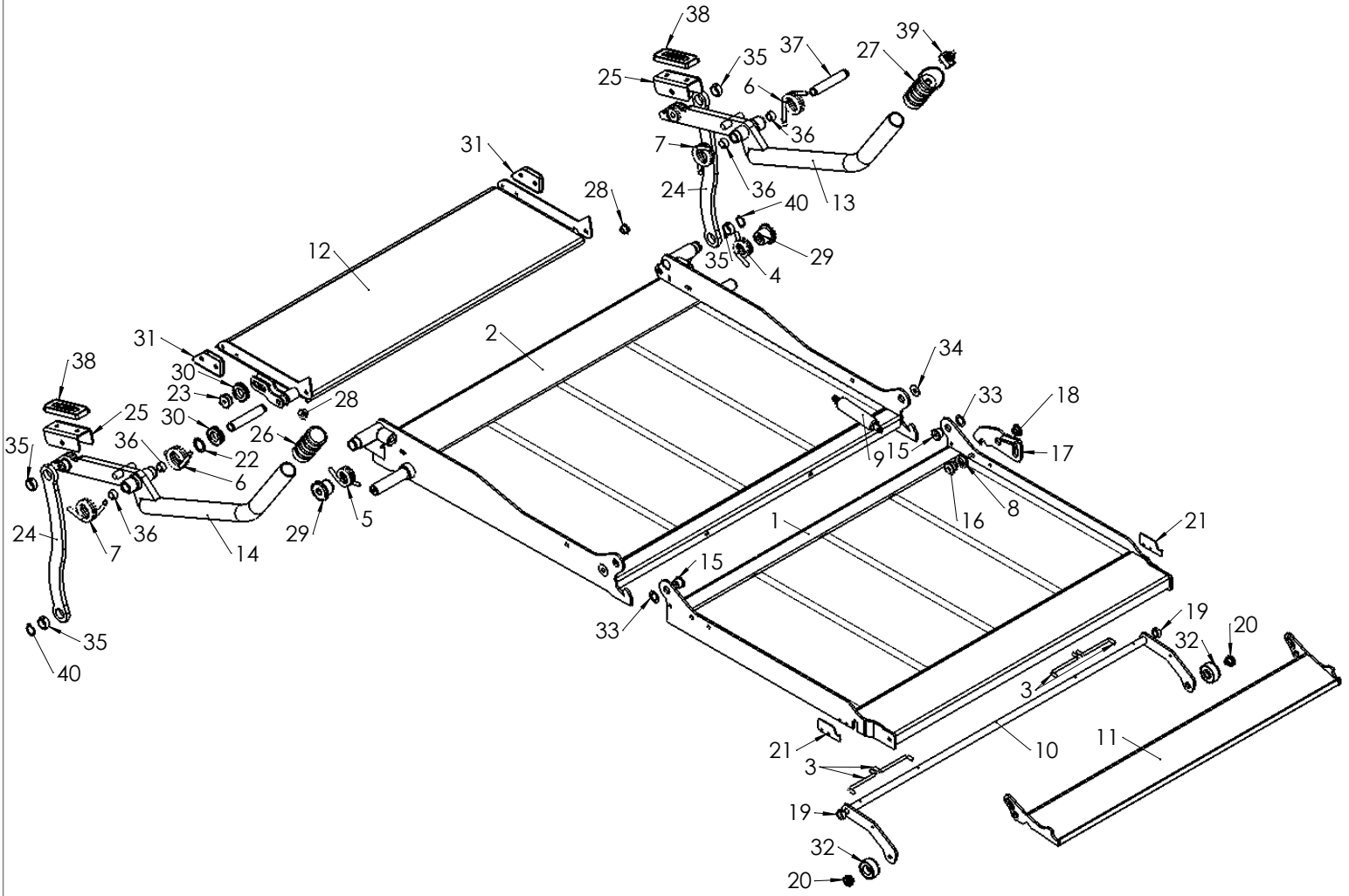
Pos	Code	Description
1	V124.24	Logical valve compl. P20/CH 24V
1	V124.12	Logical valve compl. P20/CH 12V
2	P900	Connection MP003 - P016
3	P032	Hand pump DHP20/21
4	P019.H.0300	Handle hand pump P019,P032,P033,P034
5	P016	Pump 0.48cc DHVZ
6	MP003	Motor 500W 24V
6	MP004	Motor 500W 12V
7	M6057	Case hydr.power pack DH-P20/21
8	M6056	Cover hydr.power pack DH-P20/21
8	M6061.O1	Cover hydr.power pack G.P + P032
9	M4901.090	Collar ø90
10	M3005.1	Tank DHC 1 liter
11	M2815	Spacer hydr.power pack G.P

Pos	Code	Description
12	M2814	Closing plate hydr.power pack G.P
13	K0360.150	Hydraulic pipe synthetic 1/4" 150mm
14	K0360.085	Hydraulic pipe synthetic 1/4" 85mm
15	F009	Air release cap 3/8"
16	F008	Filter 1/4"
17	E0783.E.Z	Wander lead 2 buttons E Contact
18	E0781	Holder wander lead
19	E0155	Muff chuck PG11
20	E0068	Battery switch
21	E0053	Relay 80A 24V
21	E0054	Relay 80A 12V
22	E0034	Fuse-holder control box
23	DO090.35	O-ring ø90x3.5



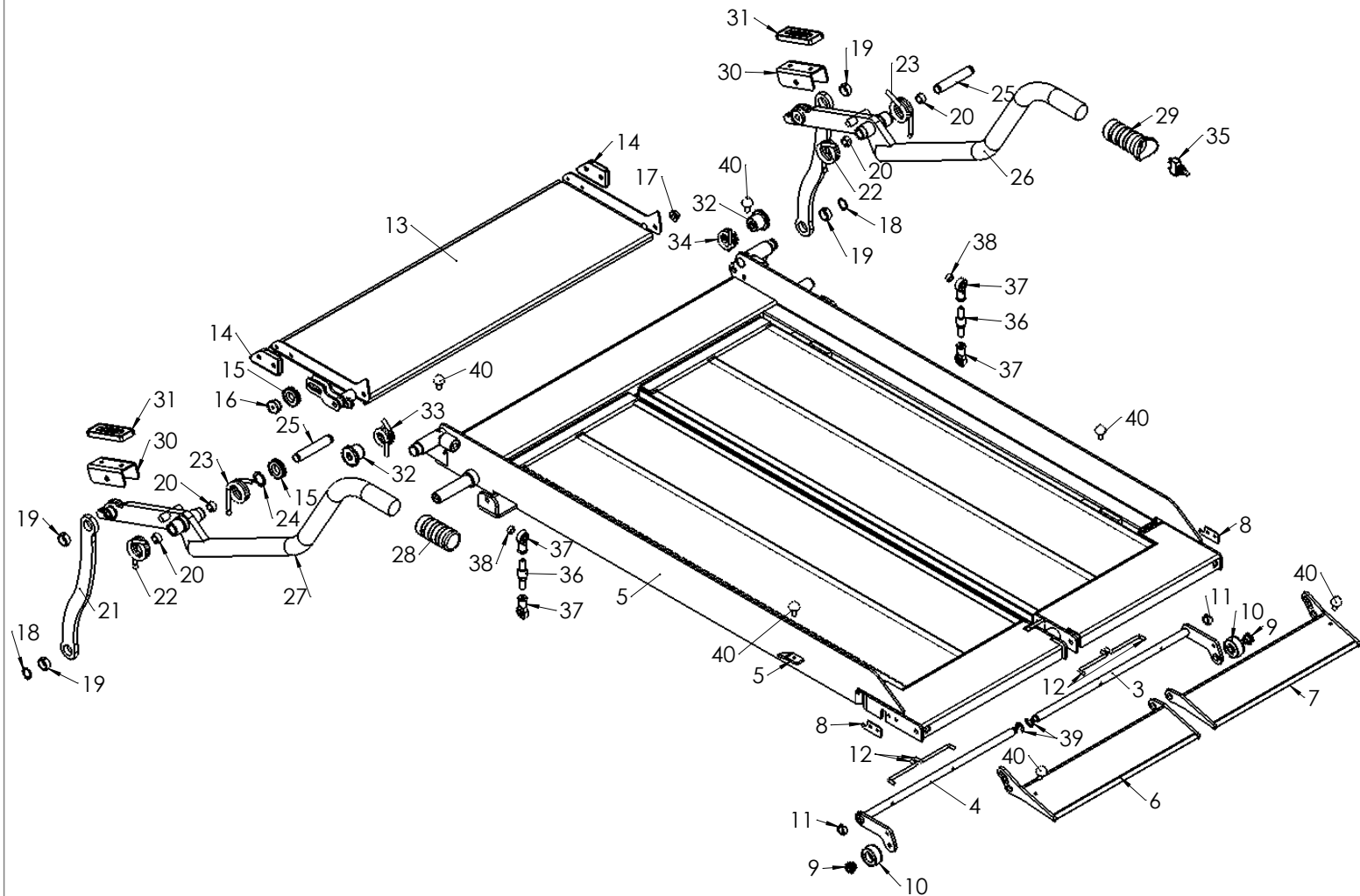
Pos	Code	Description
1	XQS.PH2.LE.W	Platform steel PH2 + Snr
2	VRX071	Spring pallet stop assembly DHP
3	VRW073.R	Spring bridge plate ø4 R
4	VRW073.L	Spring bridge plate ø4 L
5	VRW072.R	Spring right Handrail P20 ø5
6	VRW072.L	Spring left Handrail P20 ø5
7	M6059.920	Lever pallet stop standard PH2/P2 - 920mm
7	M6059.820	Lever pallet stop standard PH2/P2 - 820mm
8	M6058.920	Pallet stops standard PH2/P2 - 920mm
8	M6058.820	Pallet stops standard PH2/P2 - 820mm
9	M6055.B	Bridge plate P20 (Opt S955)
10	M6054.R	Safety handrail right P20
11	M6054.L	Safety handrail left P20
12	M6022	Spacer ring pallet stops P20
13	M6021	Nut M6001 M8 (DH-P)
14	M6020	Plate pallet stops DH-P
15	M6019	Ring ø30/23x2 mm

Pos	Code	Description
16	M6017	Bearing bush cable guide P20
17	M6015	Bar safety handrail P20
18	M6014	Mounting plate M0506.Z
19	M6011.H	Handle DHP
20	M6011.C	Handle contact DHP
21	M6009	Spacer bush bridge plate
22	M6008	Cam DHP ø27
23	M6006	Cable guide ø4
24	M6005	Strip DHP 30x10
25	M6001	Roll bridge plate ø38
26	M5282	Rubber ø20x15mm - M6x18
27	M1820.10T	Bearing bush ø20x10mm
28	M1815.10T	Bearing bush ø15x10mm
29	M1715.094	Pin ø15x94 mm (P20)
30	M0506.2	Guide arm DHP
31	E0380	Switch handle I-O-I
32	BC20	Circlip exterior ø20



Pos	Code	Description
1	XQPS.PH2.LE.W	Point steel PH2.H2 + Snr
2	XQKS.PH2.LE.W	Fixed part steel PH2.H2 + Snr
3	VRX071	Spring pallet stop assembly DHP
4	VRW073.R	Spring bridge plate ø4 R
5	VRW073.L	Spring bridge plate ø4 L
6	VRW072.R	Spring right Handrail P20 ø5
7	VRW072.L	Spring left Handrail P20 ø5
8	VRW055	Torsion spring contact DHC
9	VG1000.050	Gas spring 1000N - 50mm
10	M6059.920.H2	Lever pallet stop PH2.H2 - 920mm
10	M6059.820.B	Lever pallet stop special PH2/P2 - 820mm
11	M6058.920.H2	Pallet stop PH2.H2 - 920mm
11	M6058.820.H2	Pallet stop PH2.H2 - 820mm
12	M6055.B	Bridge plate P20 (Opt S955)
13	M6054.B.R	Safety handrail right PH2 -B-
14	M6054.B.L	Safety handrail left PH2 -B-
15	M6028	Bush hinge PH2.H2
16	M6027	Bush torsion spring PH2.H2
17	M6026	Platform lock PH2.H2
18	M6025	Bush lock PH2.H2
19	M6022	Spacer ring pallet stops P20

Pos	Code	Description
20	M6021	Nut M6001 M8 (DH-P)
21	M6020.H2	Plate pallet stop PH2.H2
22	M6019	Ring ø30/23x2 mm
23	M6017	Bearing bush cable guide P20
24	M6015	Bar safety handrail P20
25	M6014	Mounting plate M0506.Z
26	M6011.H	Handle DHP
27	M6011.C	Handle contact DHP
28	M6009	Spacer bush bridge plate
29	M6008	Cam DHP ø27
30	M6006	Cable guide ø4
31	M6005	Strip DHP 30x10
32	M6001	Roll bridge plate ø38
33	M1916.25.1	Washer ø25/16.5x1mm
34	M1908.25.1	Washer ø25/8.5x1mm
35	M1820.10T	Bearing bush ø20x10mm
36	M1815.10T	Bearing bush ø15x10mm
37	M1715.094	Pin ø15x94 mm (P20)
38	M0506.2	Guide arm DHP
39	E0380	Switch handle I-O-I
40	BC20	Circlip exterior ø20



Pos	Code	Description
1	XQS.PH2.V2.LE.W.R	Foldable platform right PH2.V2 + Snr
2	XQS.PH2.V2.LE.W.L	Foldable platform left PH2.V2 + Snr
3	M6059.820.R	Lever pallet stop right PH2.V2
4	M6059.820.L	Lever pallet stop left PH2.V2
5	XQS.PH2.V2.LE.W	Platform steel PH2.V2 + Snr
6	M6058.820.L	Pallet stop left PH2.V2
7	M6058.820.R	Pallet stop right PH2.V2
8	M6020	Plate pallet stops DH-P
9	M6021	Nut M6001 M8 (DH-P)
10	M6001	Roll bridge plate ø38
11	M6022	Spacer ring pallet stops P20
12	VRX071	Spring pallet stop assembly DHP
13	M6055.B	Bridge plate P20 (Opt S955)
14	M6005	Strip DHP 30x10
15	M6006	Cable guide ø4
16	M6017	Bearing bush cable guide P20
17	M6009	Spacer bush bridge plate
18	BC20	Circlip exterior ø20
19	M1820.10T	Bearing bush ø20x10mm
20	M1815.10T	Bearing bush ø15x10mm

Pos	Code	Description
21	M6015	Bar safety handrail P20
22	VRW072.L	Spring left Handrail P20 ø5
23	VRW072.R	Spring right Handrail P20 ø5
24	M6019	Ring ø30/23x2 mm
25	M1715.094	Pin ø15x94 mm (P20)
26	M6054.R	Safety handrail right P20
27	M6054.L	Safety handrail left P20
28	M6011.H	Handle DHP
29	M6011.C	Handle contact DHP
30	M6014	Mounting plate M0506.Z
31	M0506.2	Guide arm DHP
32	M6008	Cam DHP ø27
33	VRW073.L	Spring bridge plate ø4 L
34	VRW073.R	Spring bridge plate ø4 R
35	E0380	Switch handle I-0-I
36	M6029	Hinge bolt PH2.V2
37	VG0003.08	Eye hinge M8
38	M1908.12.08	Spacer ring ø8-12x8mm
39	BC10.4	Locking ring ø10 - D6799
40	M5282	Rubber ø20x15mm - M6x18