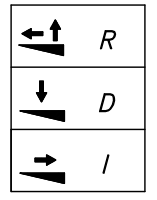


COLOUR CODES  
DIN 47100

- 1=WH
- 2=BN
- 3=GN
- 4=YE
- 5=GY

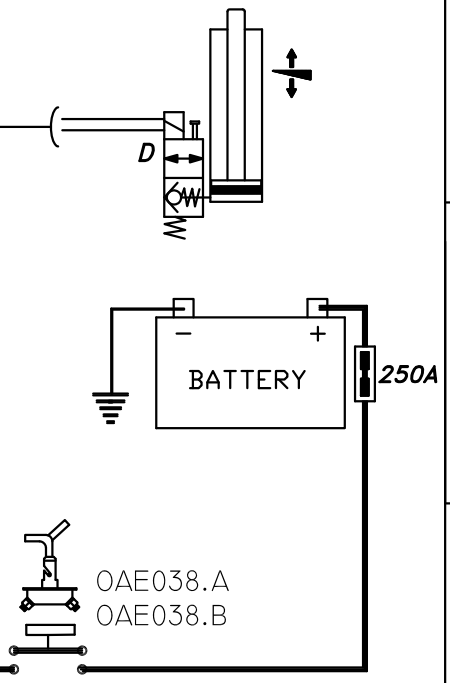
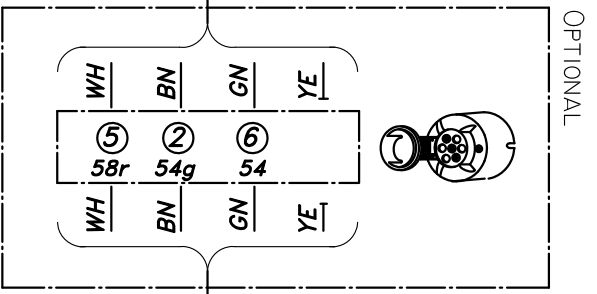
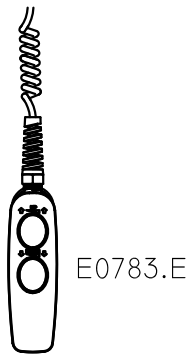
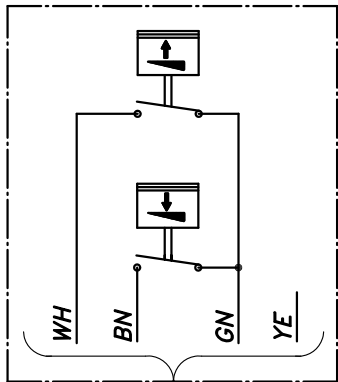
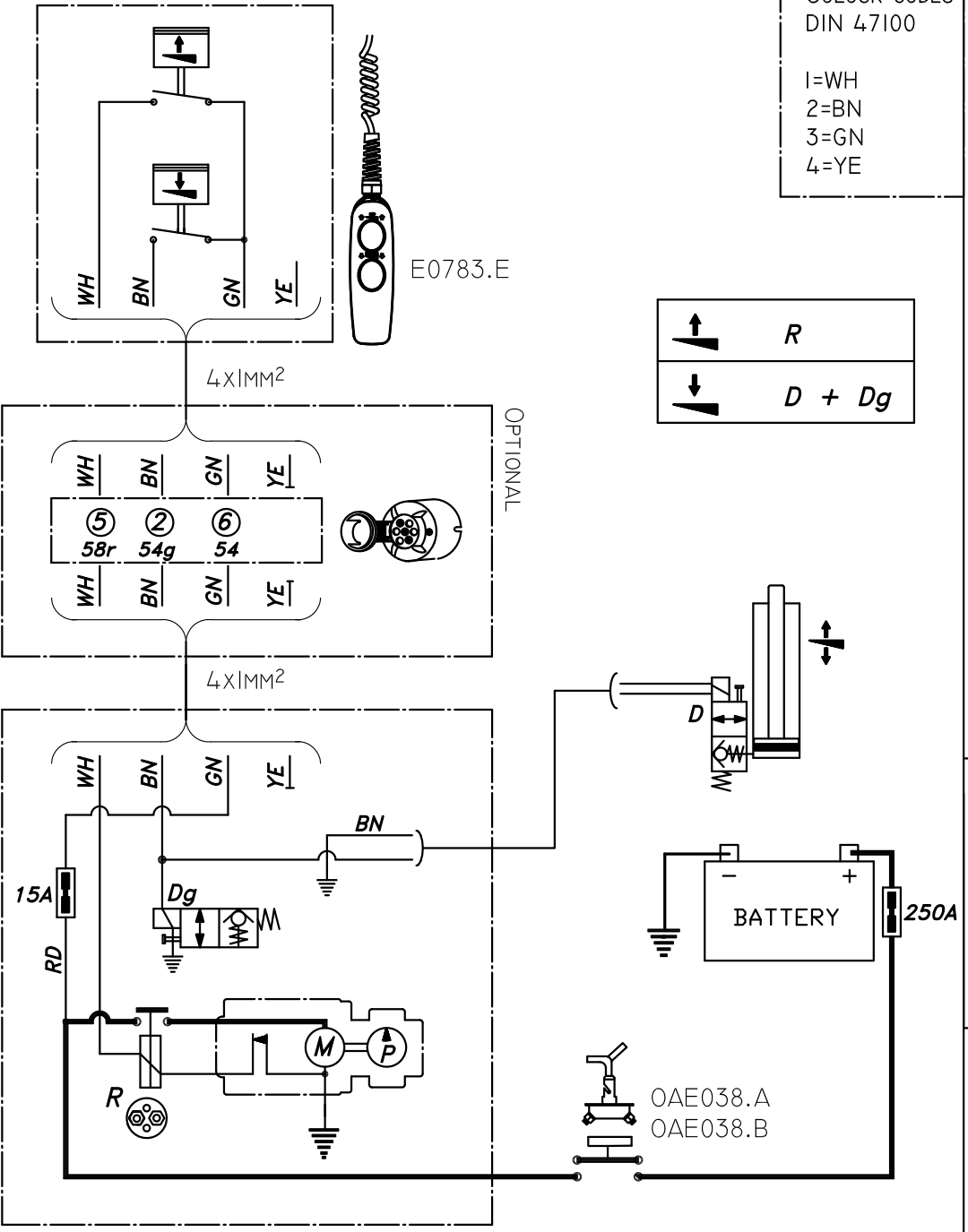
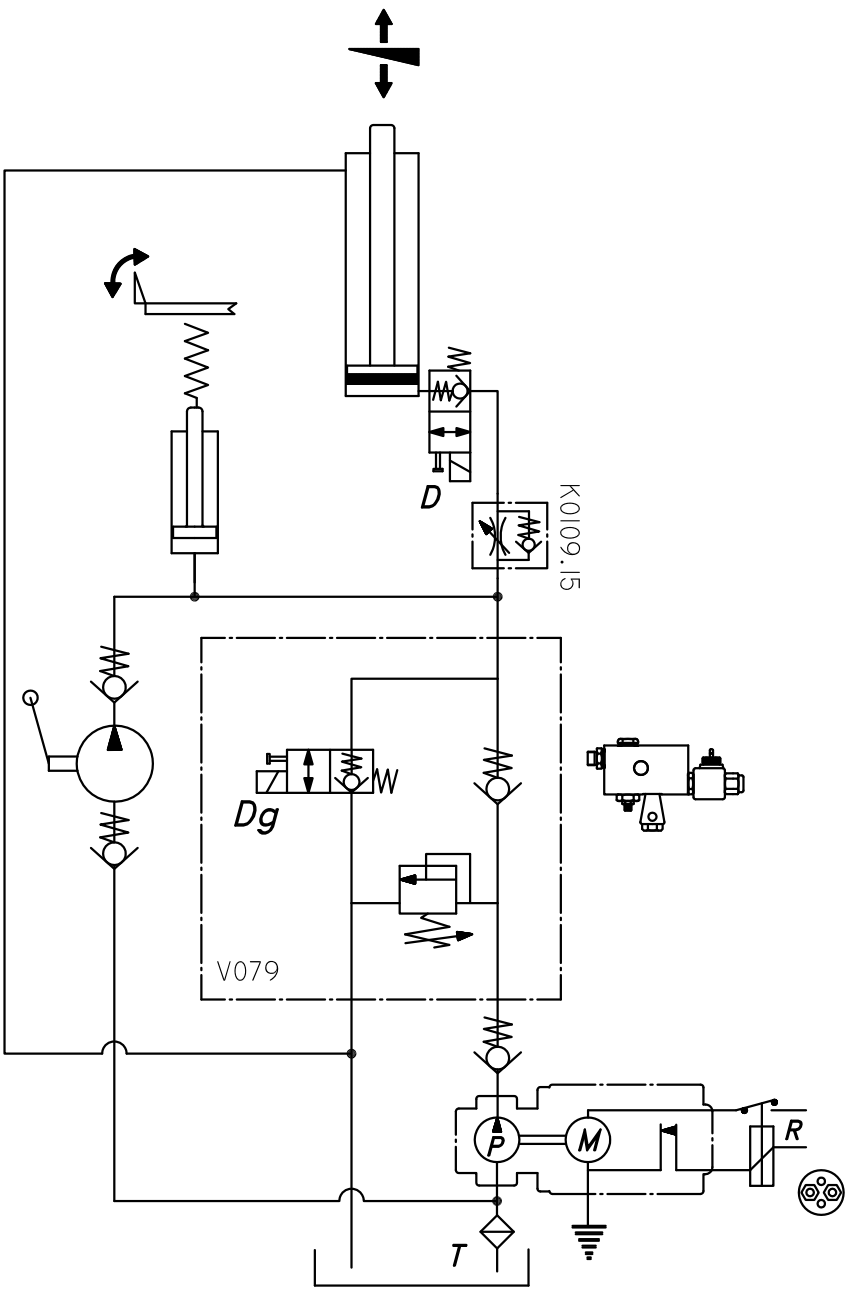
P1 pressure increase	
	20→30 Bar
	30→160 Bar
	160 Bar max



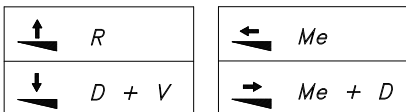
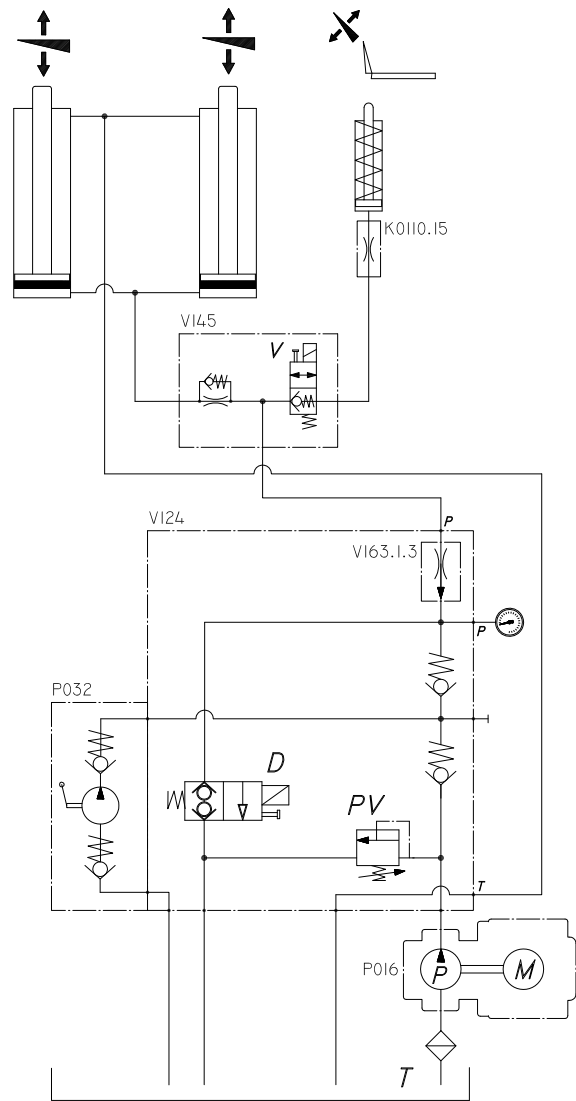
Type : Vertical passenger stair lift DH-TV  
 Power pack : GP.TV  
 Valve : V164  
 Date : 21/08/2013  
 DHOLLANDIA

COLOUR CODES  
DIN 47100

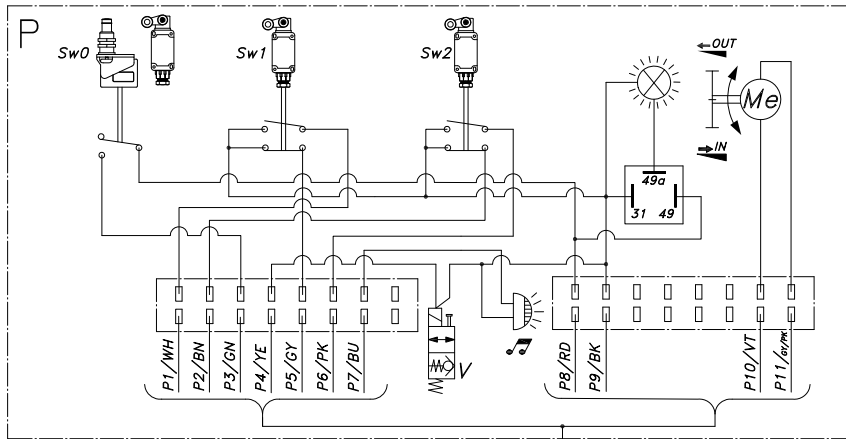
1=WH  
2=BN  
3=GN  
4=YE



DH-CH100, 101, 102, 103 CASSETTE PASSENGER LIFTS



SW0 = SWITCH BRIDGE PLATE CLOSED  
 SW1 = SWITCH FRAME IN WORK POSITION  
 SW2 = SWITCH FRAME IN STOW POSITION  
 S0 = EMERGENCY RELEASE (MOTOR BRAKE OFF)

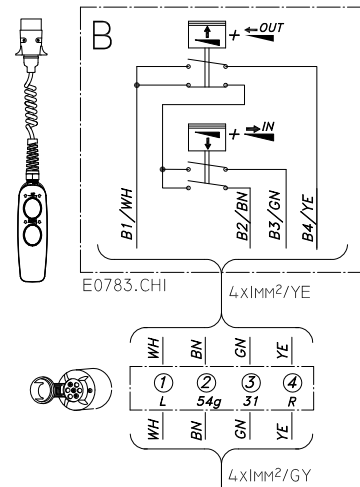
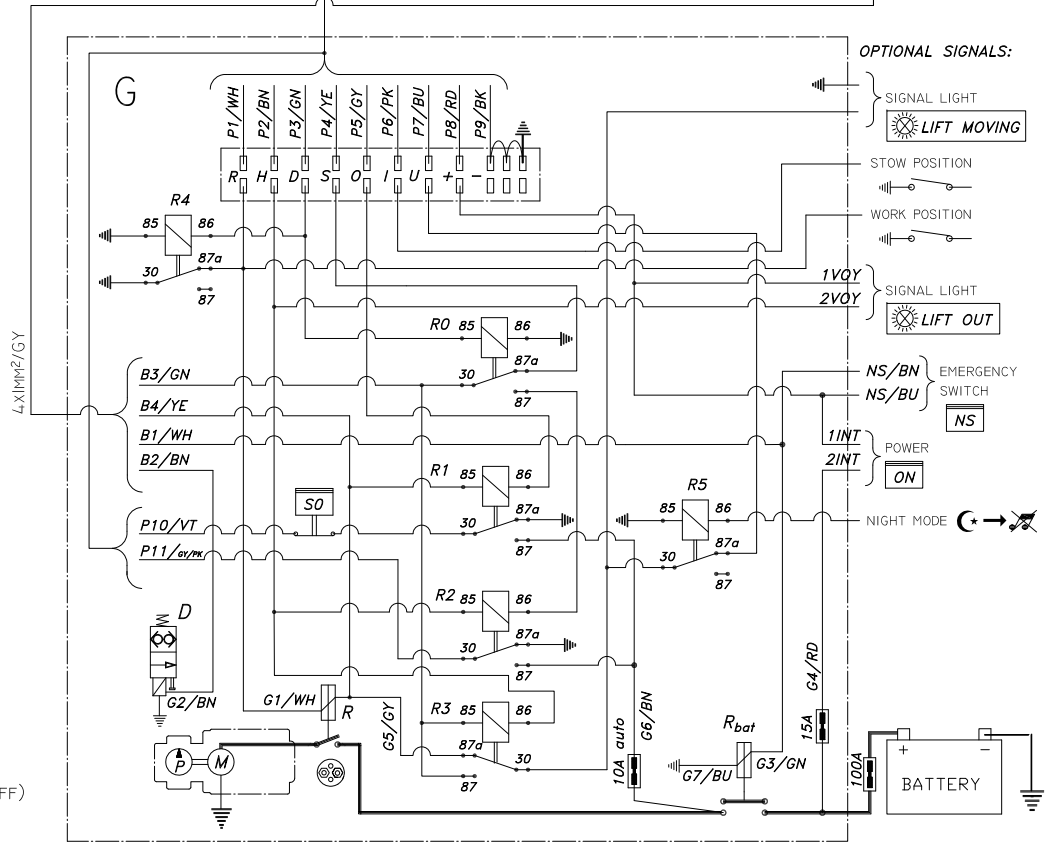


CONNECTION

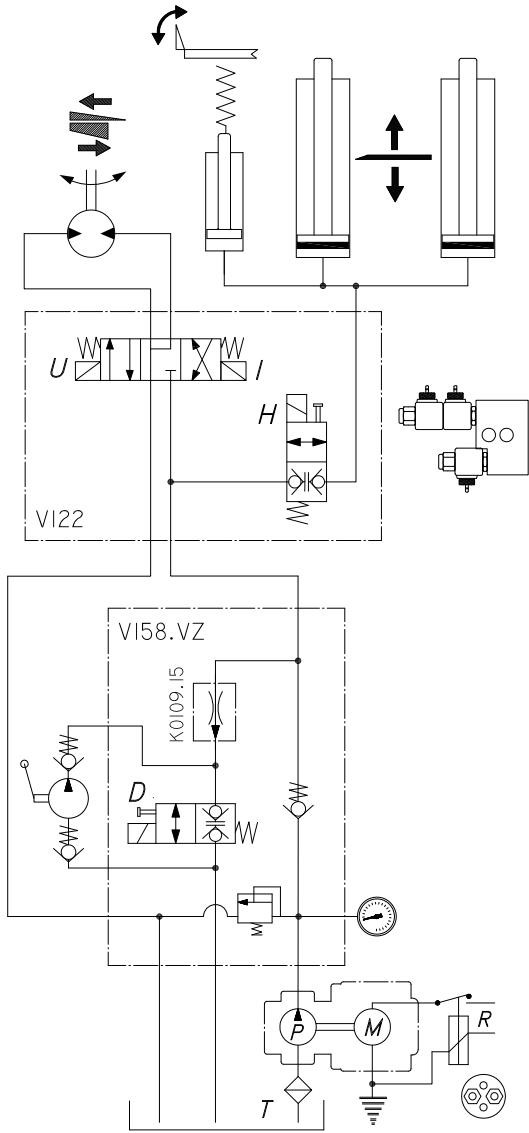
Pos.	CABLE N°
1	WH-> R
2	BN-> H
3	GN-> D
4	YE-> S
5	GY-> O
6	PK-> I
7	BU-> U
8	RD-> + 24V
9	BK-> - EARTH
10	VT-> IN
11	GY/PK-> OUT

COLOUR CODES DIN 47100

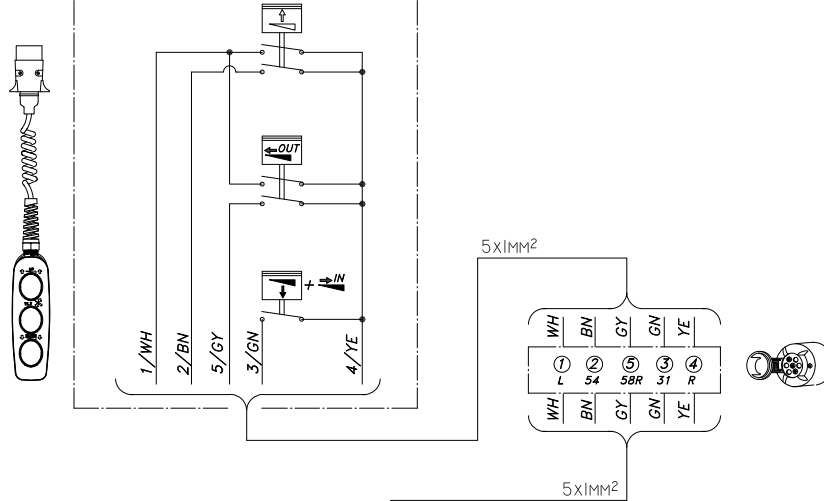
1=	WH
2=	BN
3=	GN
4=	YE
5=	GY
6=	PK
7=	BU
8=	RD
9=	BK
10=	VT
11=	GY/PK
12=	RD/BU



DH-CH001



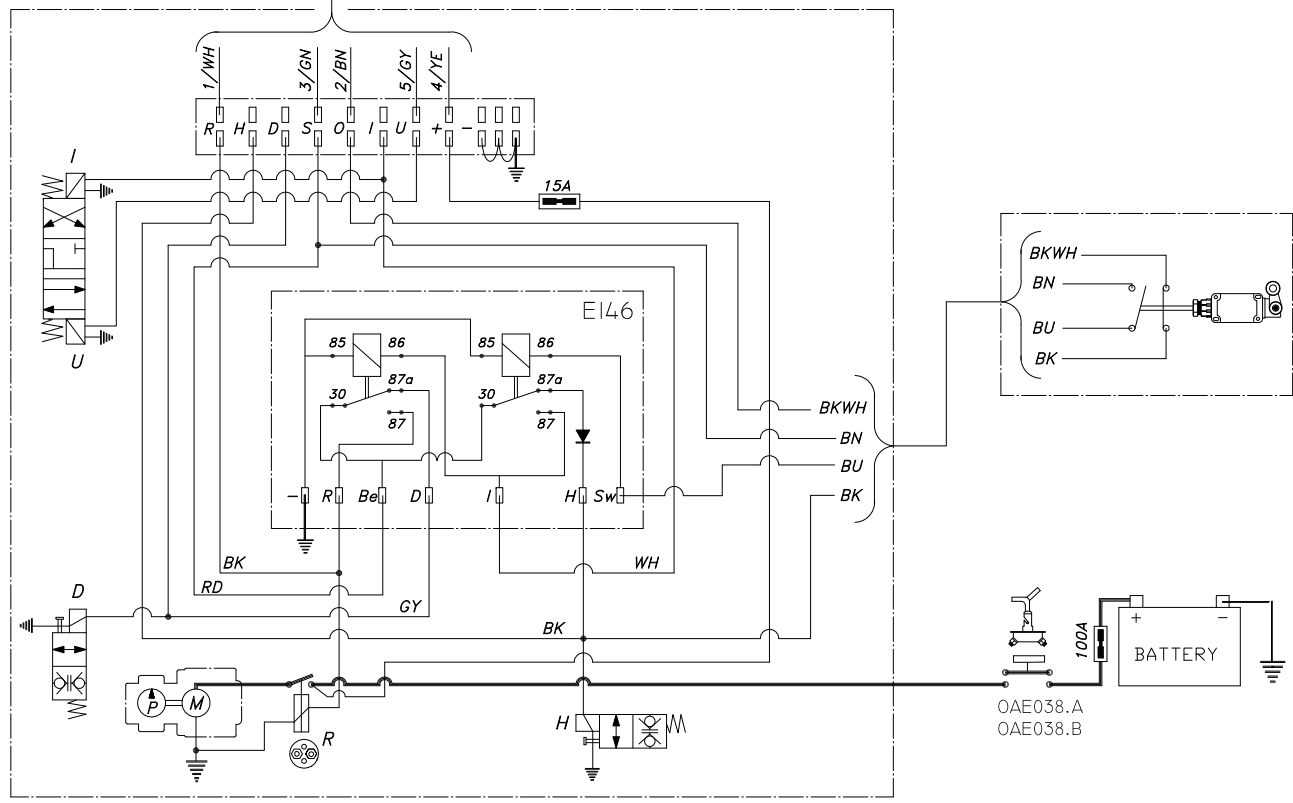
E0784.CH



	R + H
	D + H
	R + U
	R + I

COLOUR CODES  
DIN 47100

1=WH  
2=BN  
3=GN  
4=YE  
5=GY  
6=PK  
7=BU



Type : CASSETTE passenger lift DH-CH001 + hydromotor - 2008/...

Power pack : GP.CH001 + S/N°

Plan N° : Sch\_CH001-2013-01

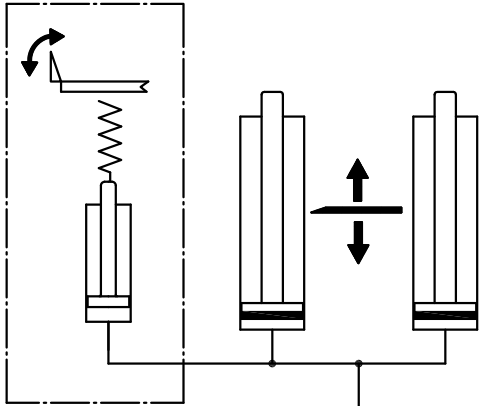
Valve : V122

Date : 14/08/2013

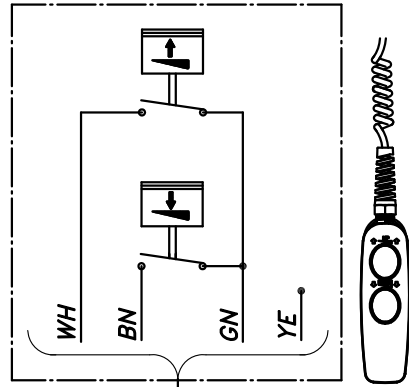
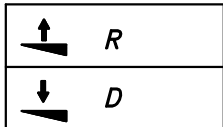
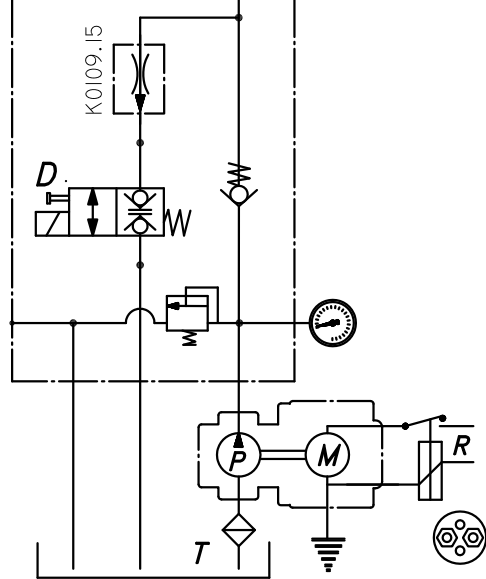
DHOLLANDIA

DH-C001

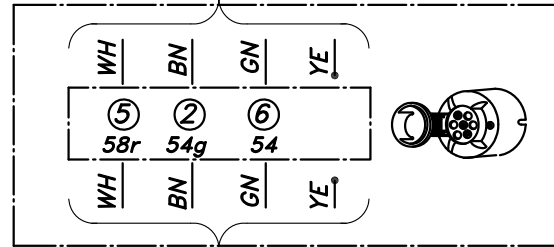
OPTION OWHI00



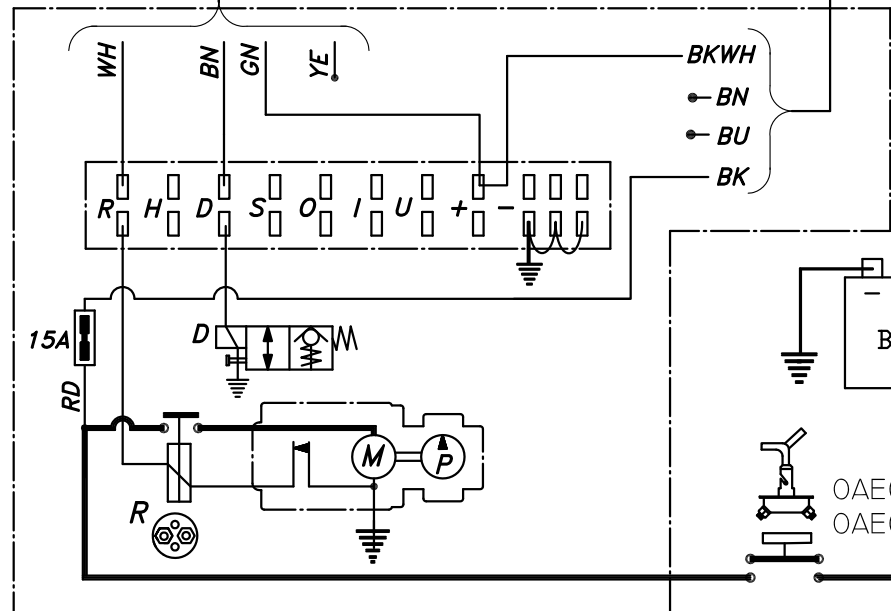
VI58



E0783.E

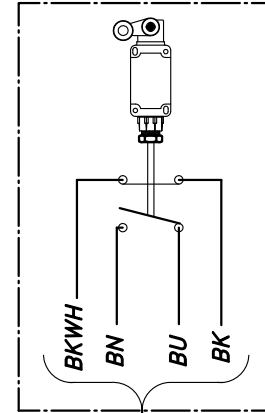


OPTIONAL



COLOUR CODES  
DIN 47100

- 1=WH
- 2=BN
- 3=GN
- 4=YE



Type : Commercial cassette lift DH-C001 with manual retraction  
Power pack : GP.C001 + S/N°  
Plan N° : Sch\_C001-2013-01

Valve : VI58

Date : 14/08/2013

2011-...

DEHOLLANDIA



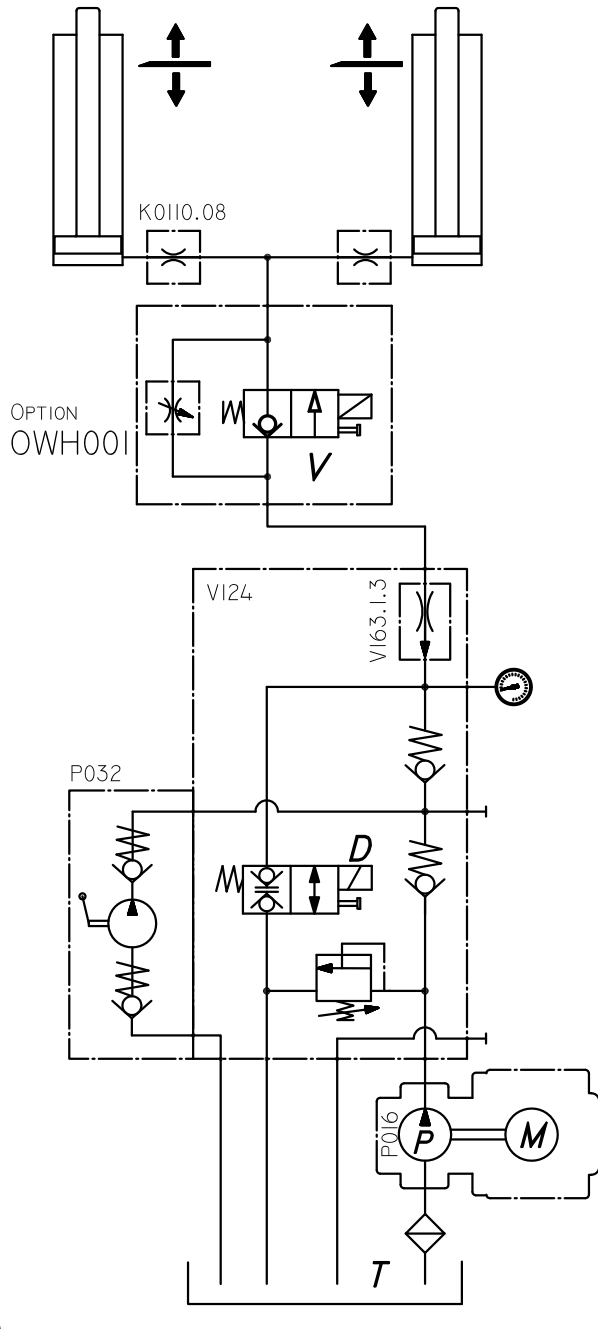
OAE038.A  
OAE038.B

DH-PH2 + OWE003

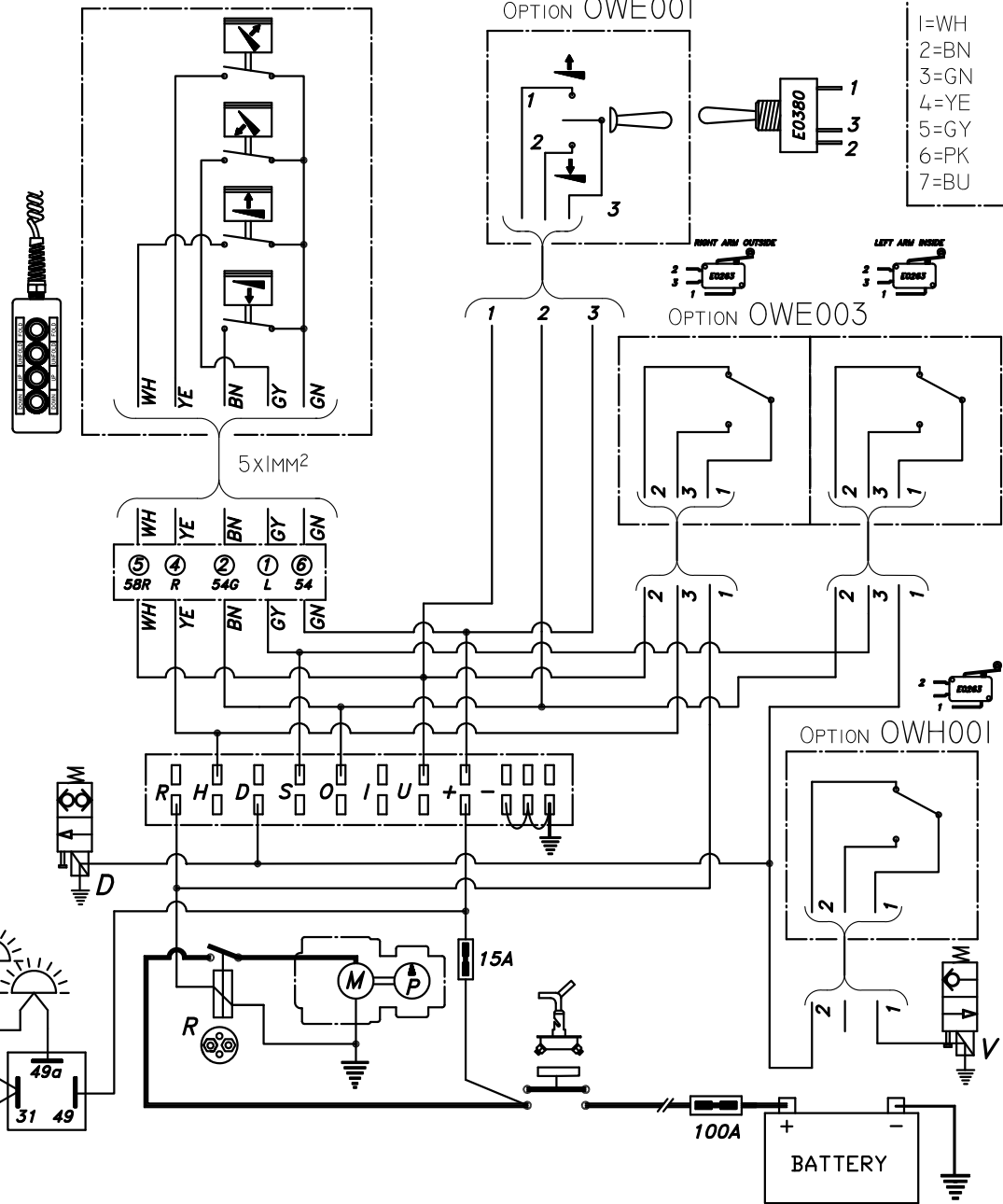
WANDER LEAD 4-BUTTON  
EC5002.P20 - OPTION OWE003

COLOUR CODES  
DIN 47100

- 1=WH
- 2=BN
- 3=GN
- 4=YE
- 5=GY
- 6=PK
- 7=BU



OPTION  
OWH001



OPTION OWE001

OPTION OWE003

OPTION OWH001

Type : Passenger lift DH-PH2 + 4-button control - Okt. 2010/...

Power pack : GP.PH2

Valve : V124

Plan N° : Sch\_PH2-OWE003-2013-02

Date : 06/08/2013

**DEHOLLANDIA**

WANDER LEAD 3-BUTTON  
E0784.P20 - OPTION OWE002

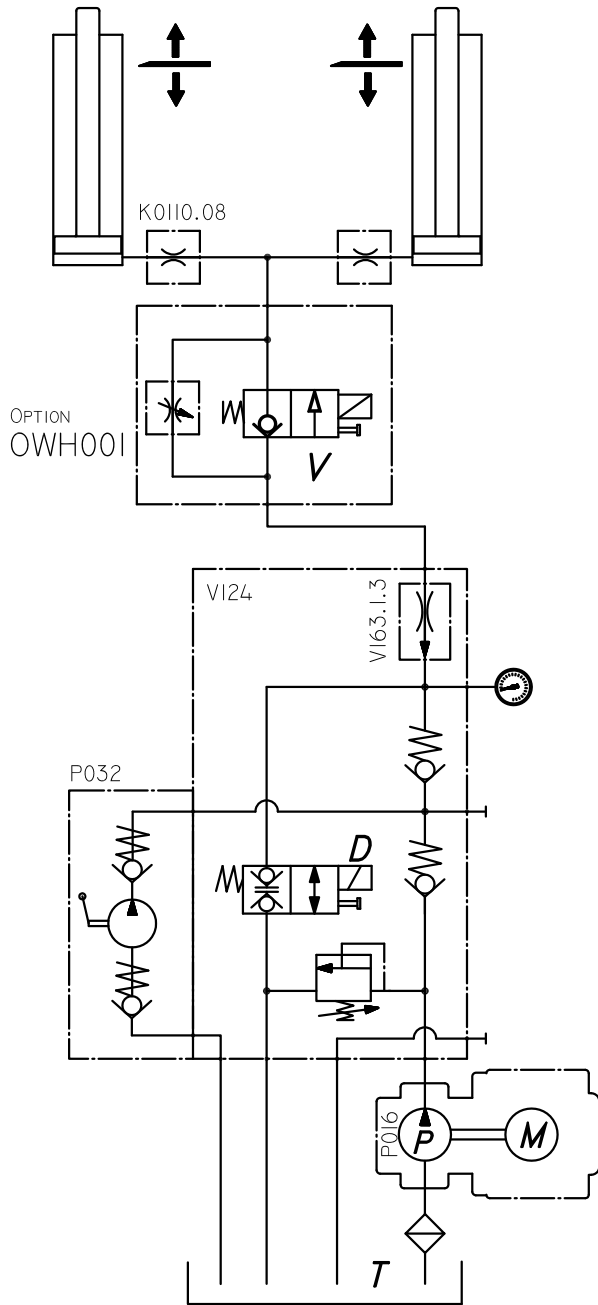
COLOUR CODES  
DIN 47100

- 1=WH
- 2=BN
- 3=GN
- 4=YE

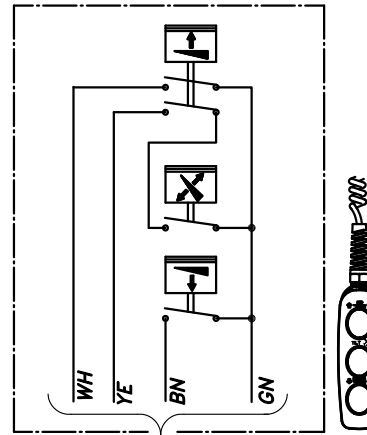
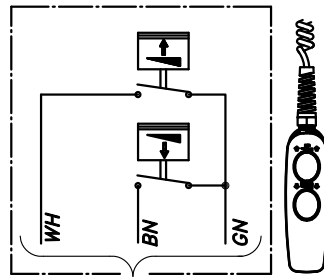
Type : Linear passenger lift DH-PH2  
Power pack : GP-PH2  
Plan N° : Sch\_PH2-2013-01

Valve : V124

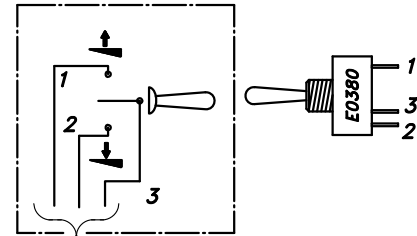
Ok. 2010/...  
Date : 06/08/2013



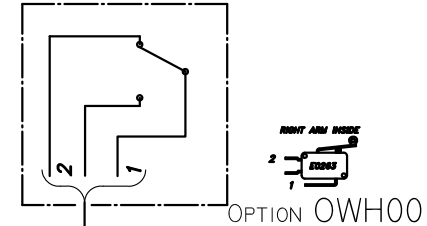
WANDER LEAD 2-BUTTON  
E0783.E



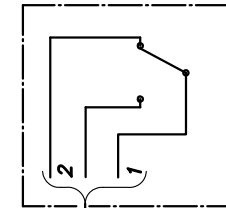
OPTION OWE001



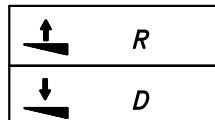
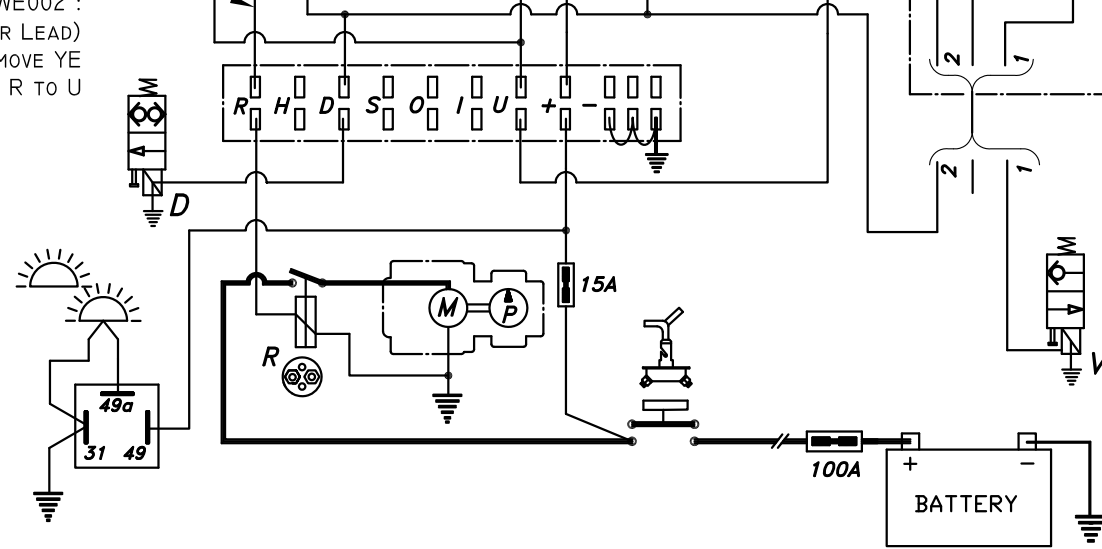
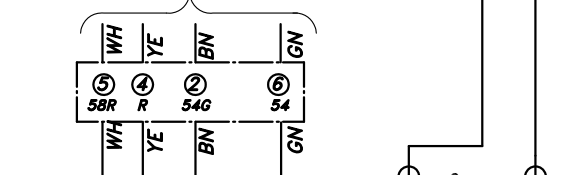
OPTION OWE002



OPTION OWH001



 WHEN NO OWE002 :  
(2-BUTTON WANDER LEAD)  
- REMOVE YE  
- LINK R TO U



Type : Van lifts DH-P1, P2 & column lift DH-VZG - 2011-...

Power pack : GP.P2 / GP.PH2 + S/N° Valve : V124

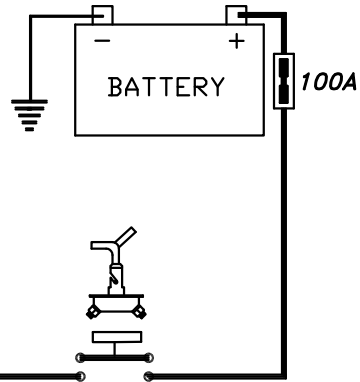
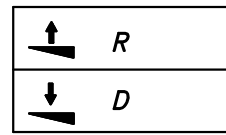
Plan N° : Sch\_P2\_VZG-2013-01

Date : 14/08/2013

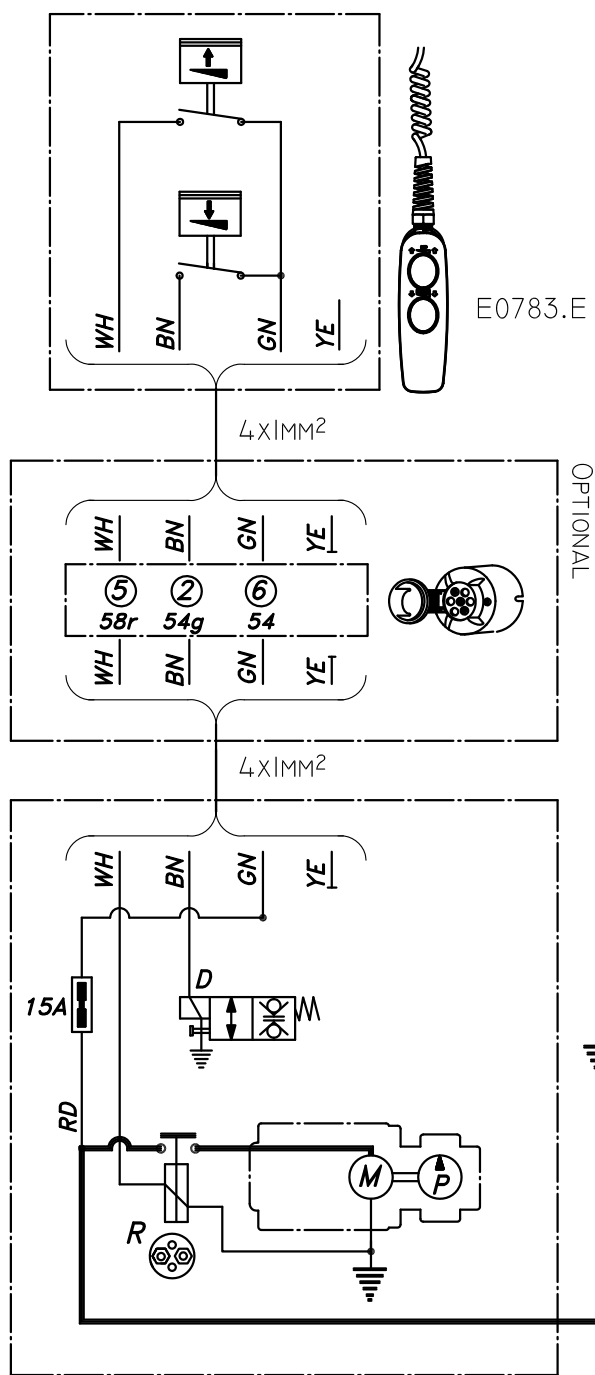


COLOUR CODES  
DIN 47100

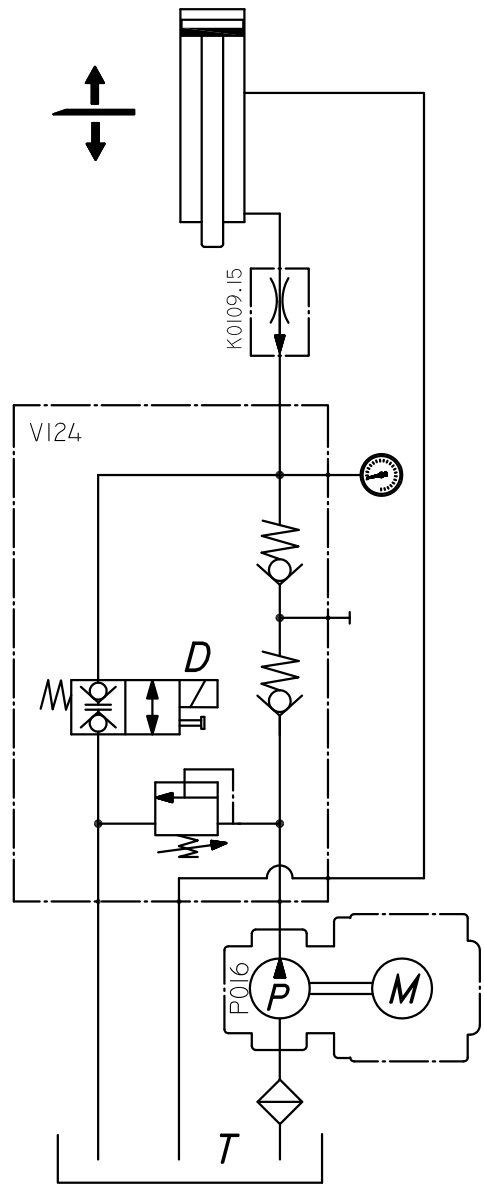
1=WH  
2=BN  
3=GN  
4=YE



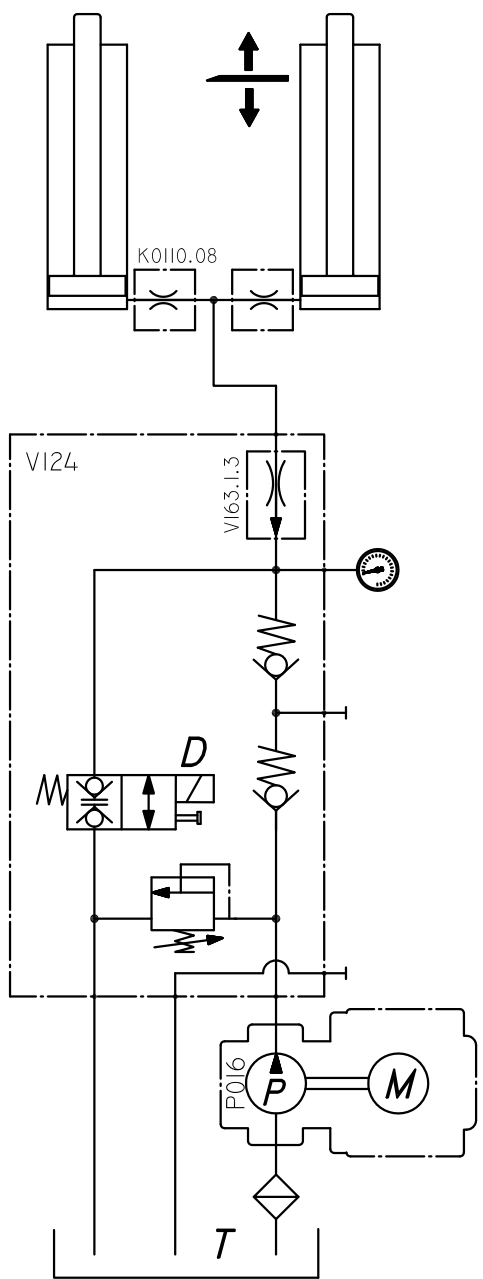
OAE038.A  
OAE038.B



DH-VZG



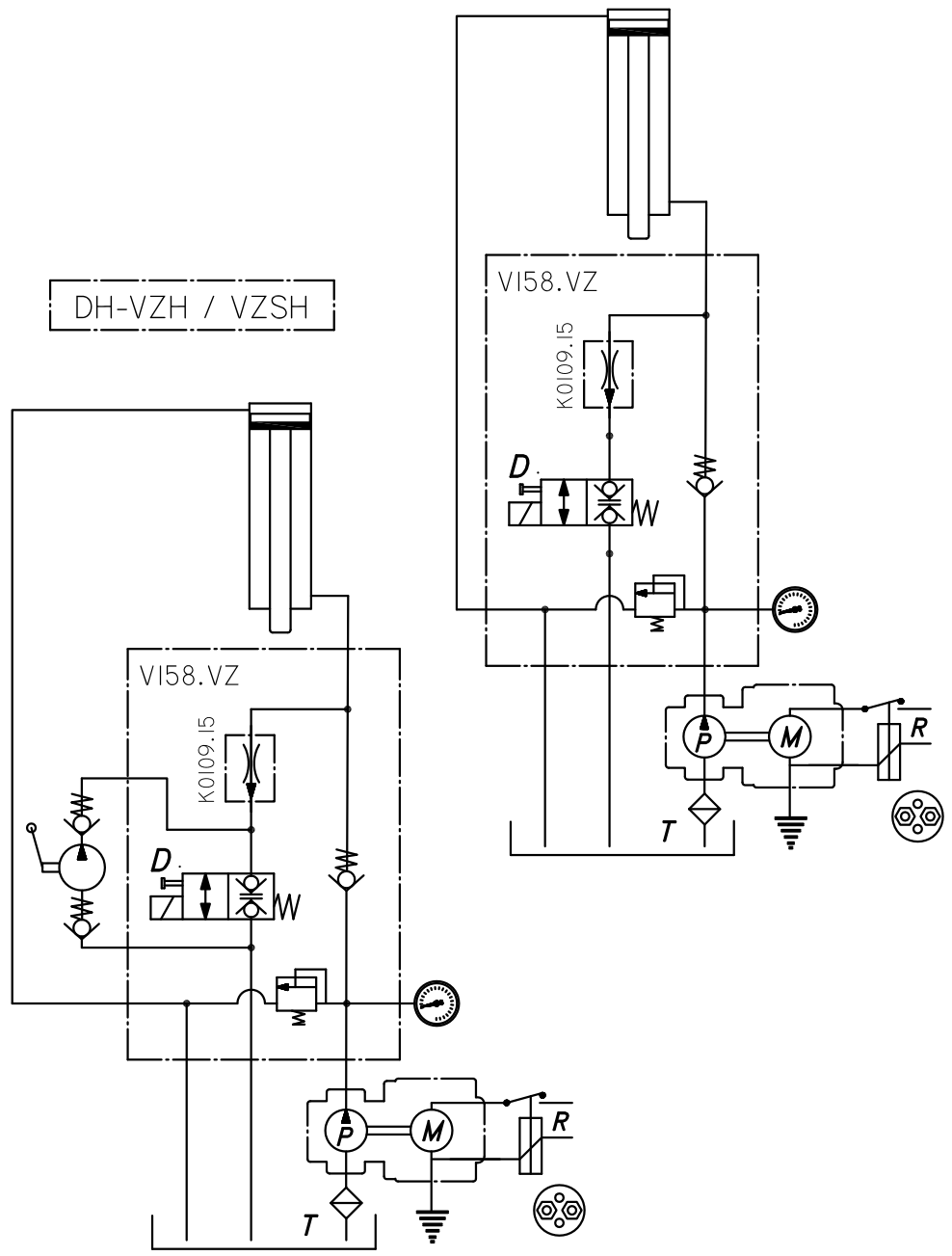
DH-PI / P2





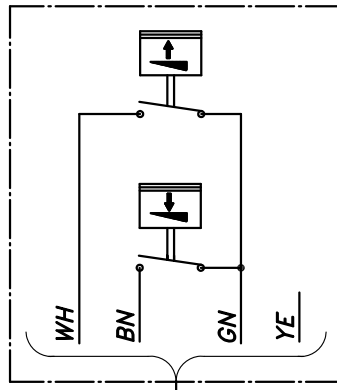
DH-VZ / VZS

DH-VZH / VZSH

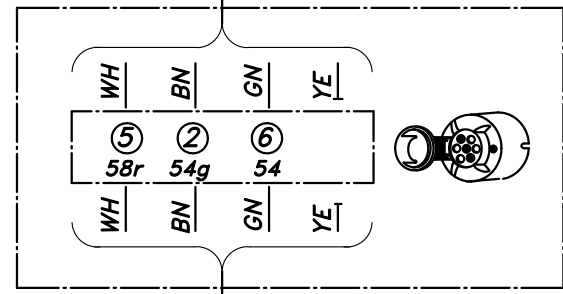


COLOUR CODES  
DIN 47100

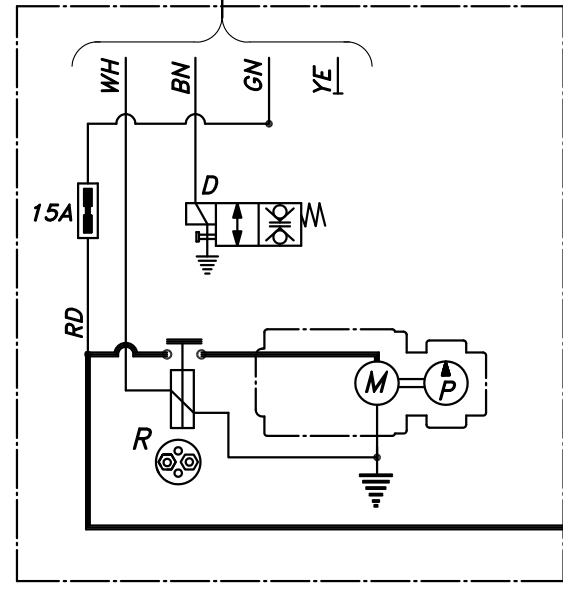
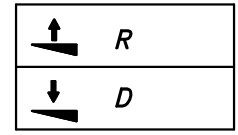
1=WH  
2=BN  
3=GN  
4=YE



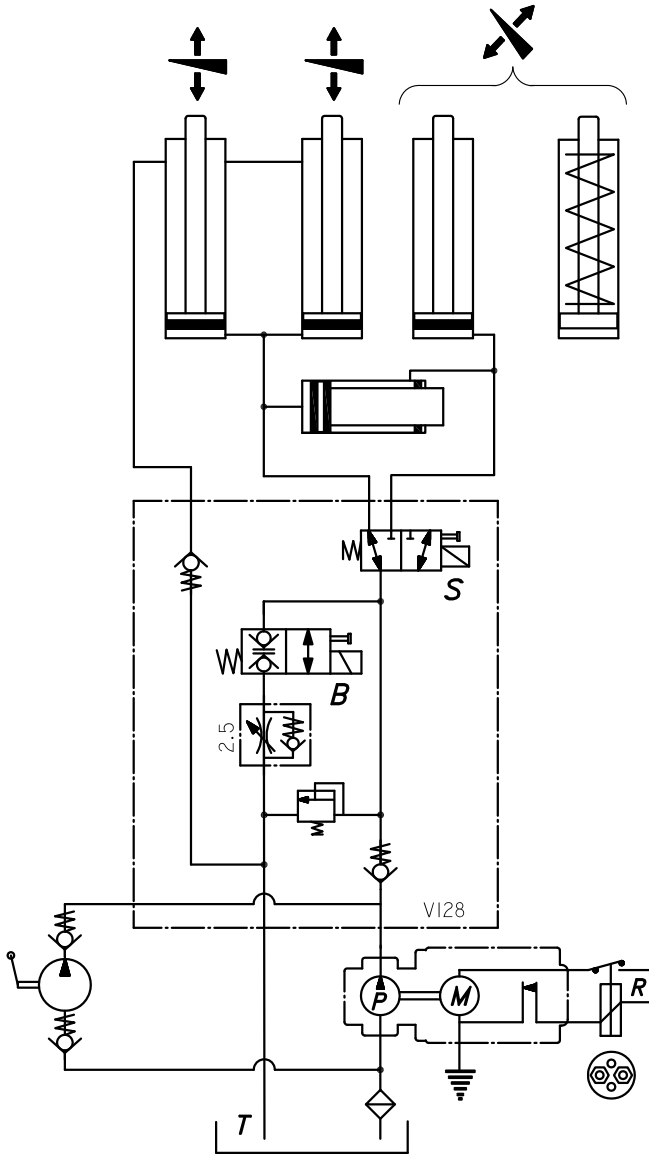
DH-VZS / VZG : E0783.E  
DH-VZ / VZH : FIXED CONTROL  
IN FRAME



OPTIONAL



OAE038.A  
OAE038.B

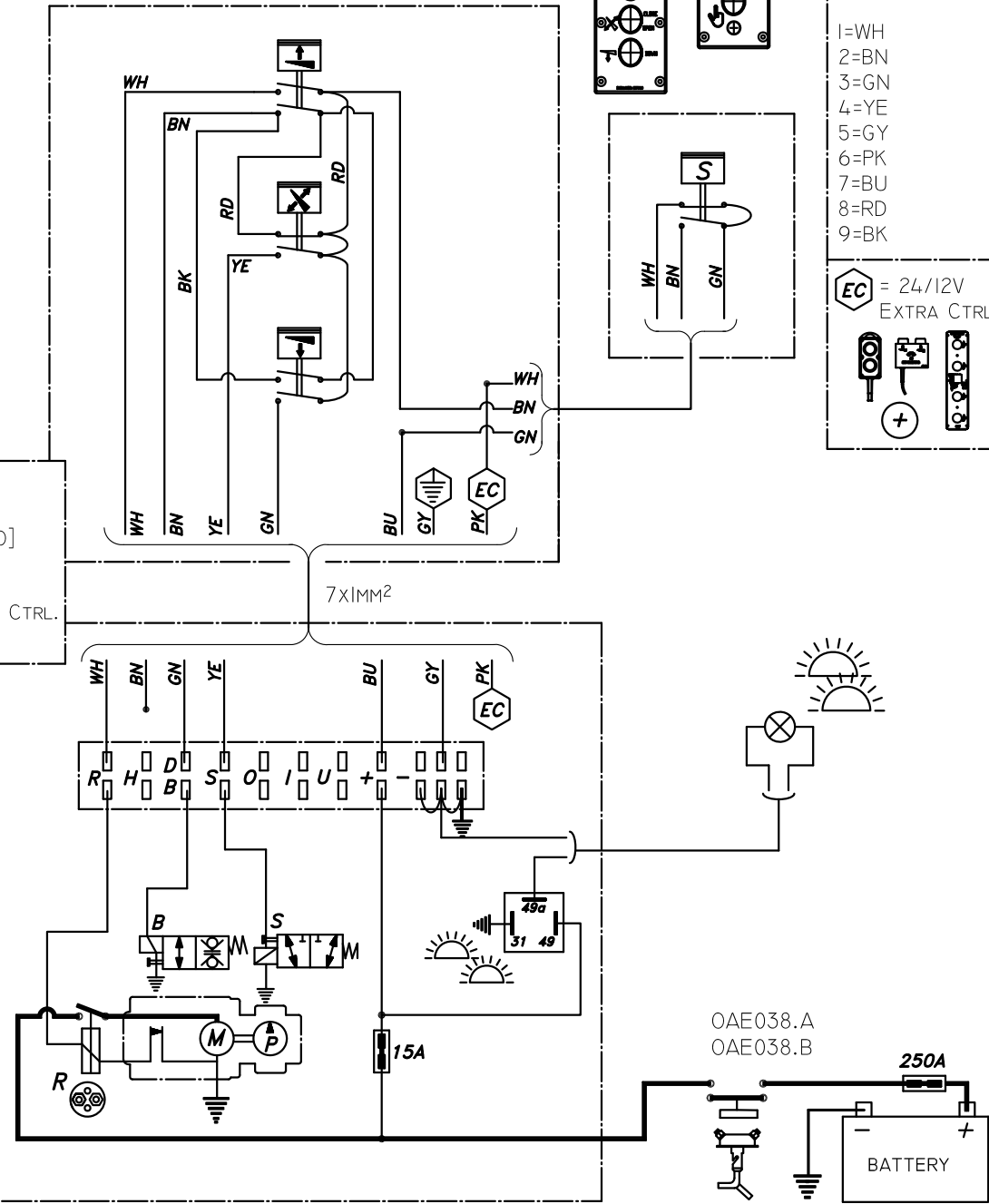


	R		R + S
	B		B + S

ECO

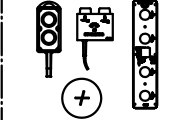
(POWER PACK:  
DOUBLE ACTING VALVE B  
3/2 WAY VALVE S)

WH-> R  
BN->  
GN-> B [B=D+O]  
YE-> S  
GY-> - EARTH  
PK-> + EXTRA CTRL.  
BU-> + 24/12V



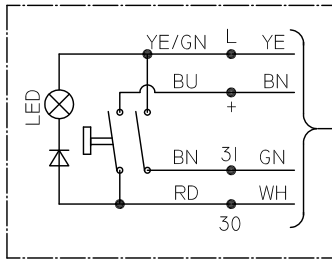
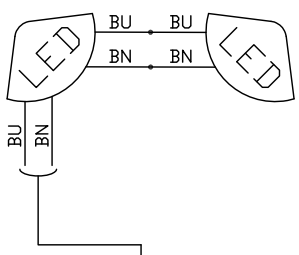
- 1=WH
- 2=BN
- 3=GN
- 4=YE
- 5=GY
- 6=PK
- 7=BU
- 8=RD
- 9=BK

EC = 24/12V  
EXTRA CTRL.



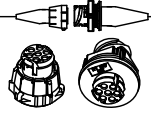
DH-LSP.05 ~TRUCK + OAE064 + OAE200 + OAE500

OAE200 PLATFORM LIGHTS



OAE503 CABIN SWITCH

OAE500 (CANNON PLUG)  
OR  
OAE501.12 (12M 4x1,5)

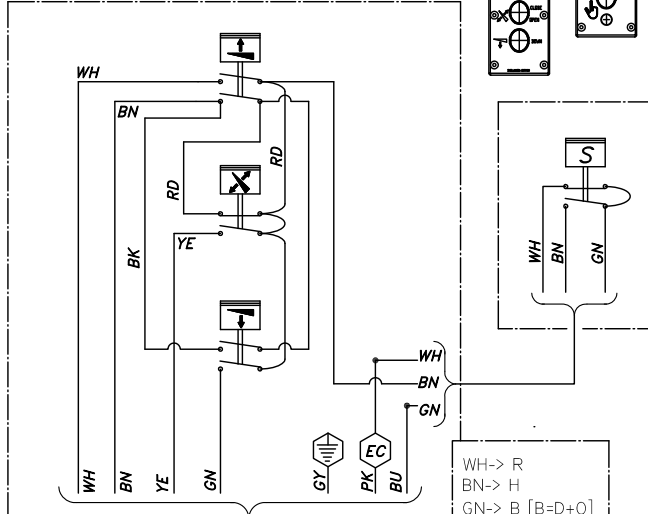


CONNECTION

Pos.	CABLE N°
1	BN/2
2	GN/3
3	
4	
5	
6	YE/4
7	WH/1

E0480.M.6.LE

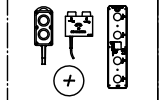
EXTERIOR CONTROL BOX REF. E0793.31.0.H



COLOUR CODES  
DIN 47100

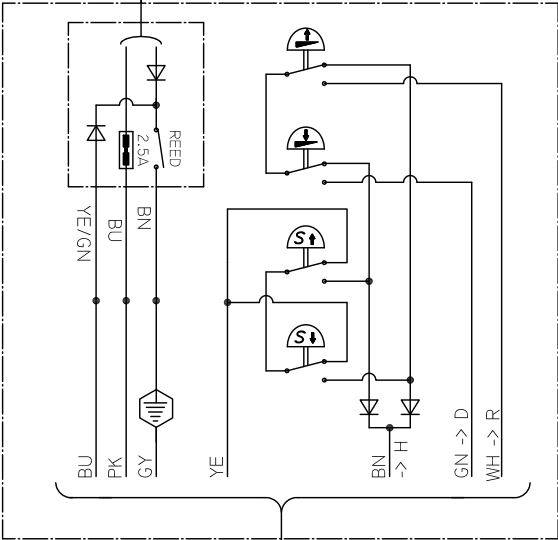
- 1=WH
- 2=BN
- 3=GN
- 4=YE
- 5=GY
- 6=PK
- 7=BU
- 8=RD
- 9=BK

EC = 24/12V  
EXTRA CTRL.



WH-> R  
BN-> H  
GN-> B [B=D+0]  
YE-> S  
GY-> - EARTH  
PK-> + EXTRA CTRL.  
BU-> + 24/12V

7x1mm<sup>2</sup>



OAE064 FOOT CTRL.  
+ REED SENSOR

E0581.M.7.LE

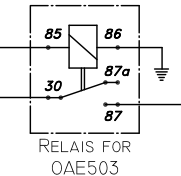
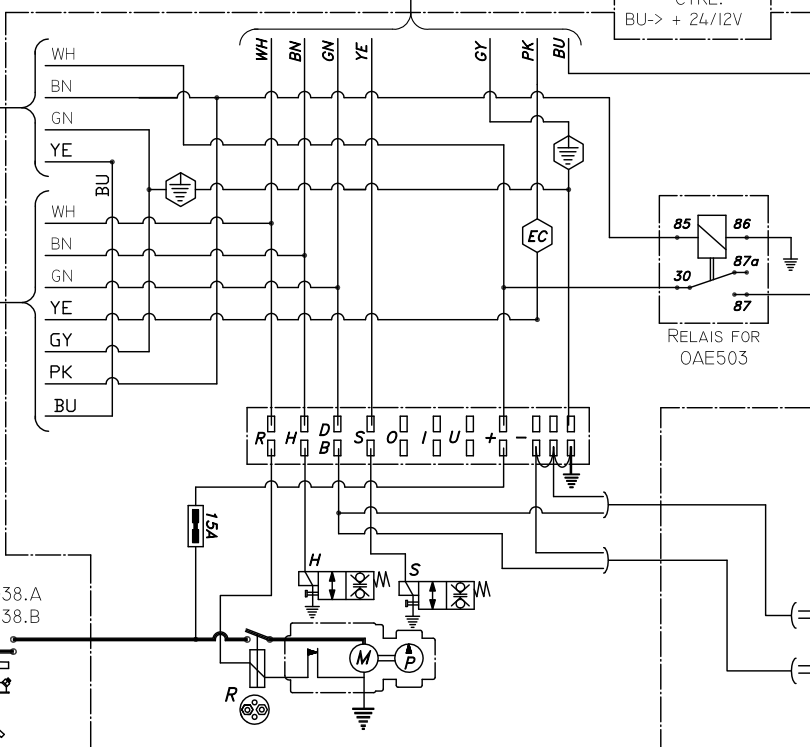
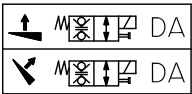
E0580.F.7.LE

CONNECTION

Pos.	CABLE N°
1	WH -> R
2	BN -> H
3	GN -> D
4	YE -> +24/12V EXTRA CTRL
5	GY -> - EARTH
6	PK -> +24/12V
7	BU -> - EARTH

OAE065 CANNON PLUG

HYDR.



RELAYS FOR  
OAE503

Type : Van Lift DH-LSP.05 + HYDR. lift - 2012/...

Power pack : G-LSP01...02

Valve : V012.D

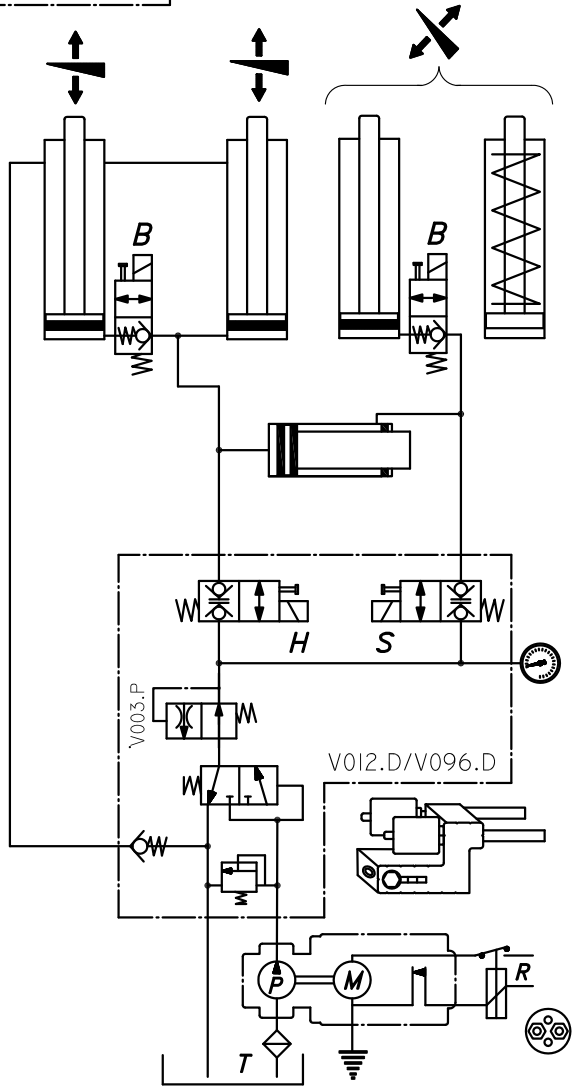
Plan N° : Sch\_LSP.05-HYD-OAE064-Truck-2013-05

Date : 16/01/2014

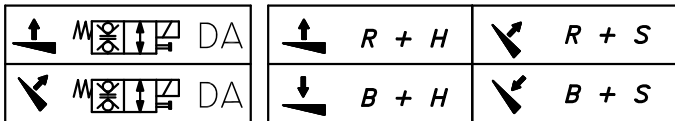
DHOLLANDIA

DH-LSP.05

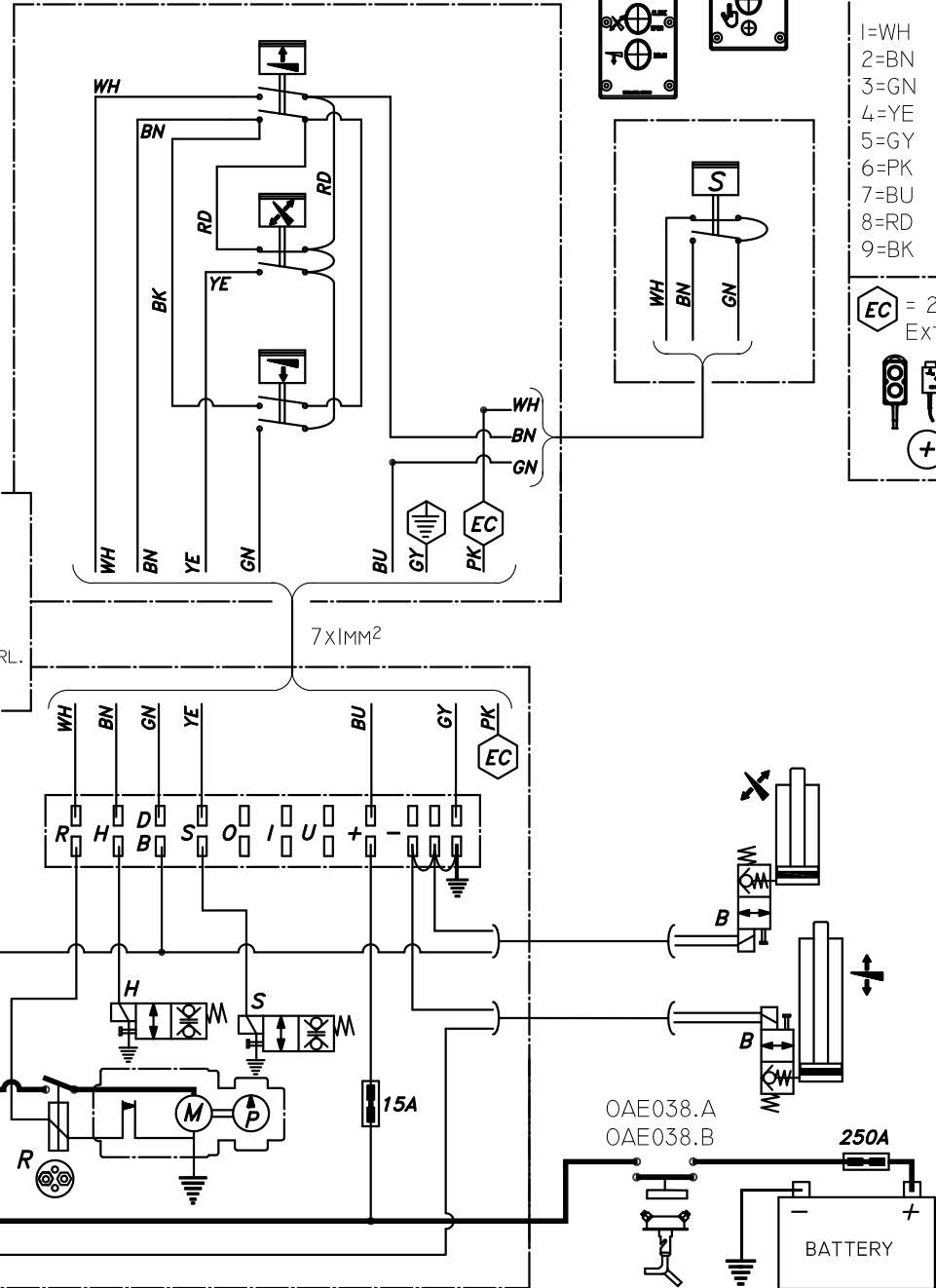
EXTERIOR CONTROL BOX REF. E0793.31.0.H



HYDR.



WH-> R  
 BN-> H  
 GN-> B [B=D+O]  
 YE-> S  
 GY-> - EARTH  
 PK-> + EXTRA CTRL.  
 BU-> + 24/12V



COLOUR CODES  
 DIN 47100

- 1=WH
- 2=BN
- 3=GN
- 4=YE
- 5=GY
- 6=PK
- 7=BU
- 8=RD
- 9=BK

