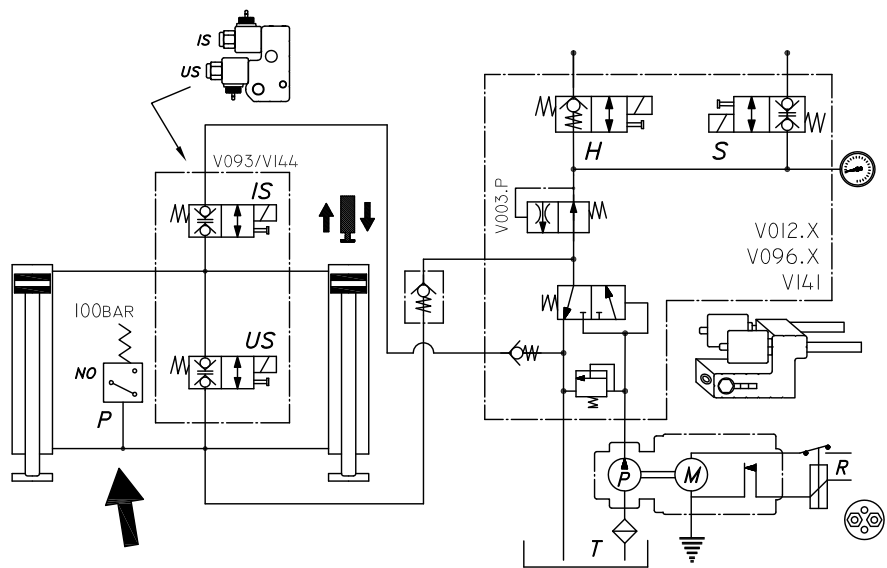
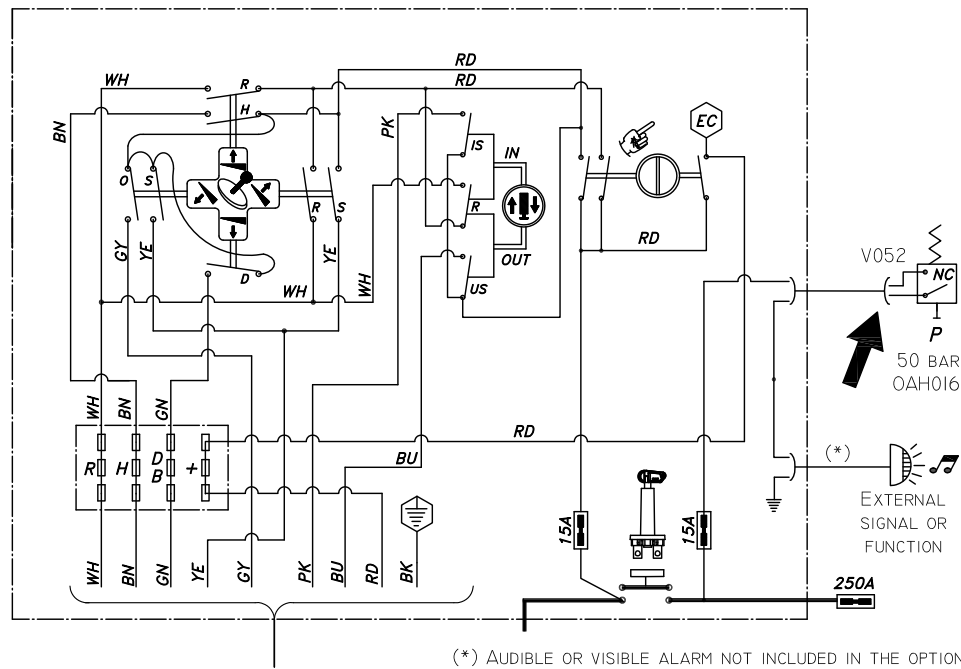


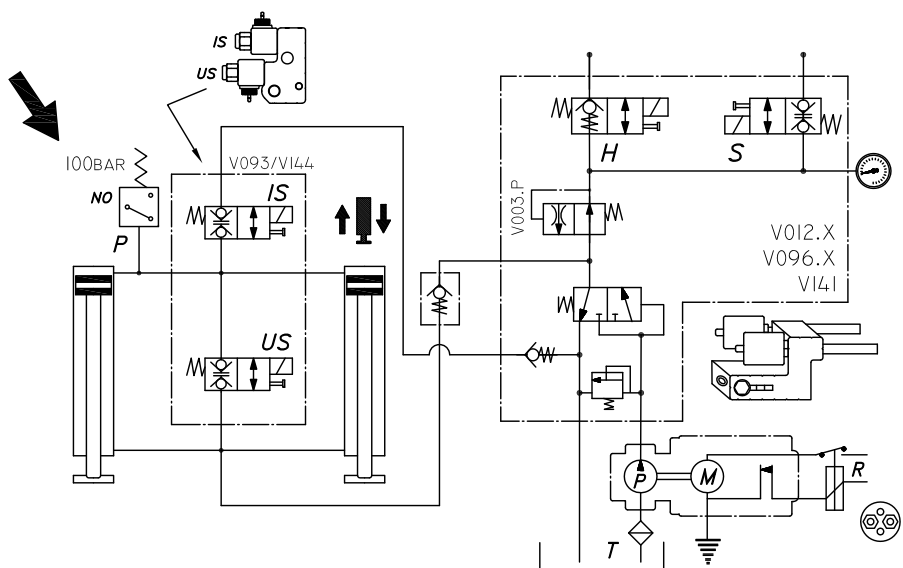
OPTION OAH016 ~ PRESSURE SWITCH ON STAB. LEGS IN



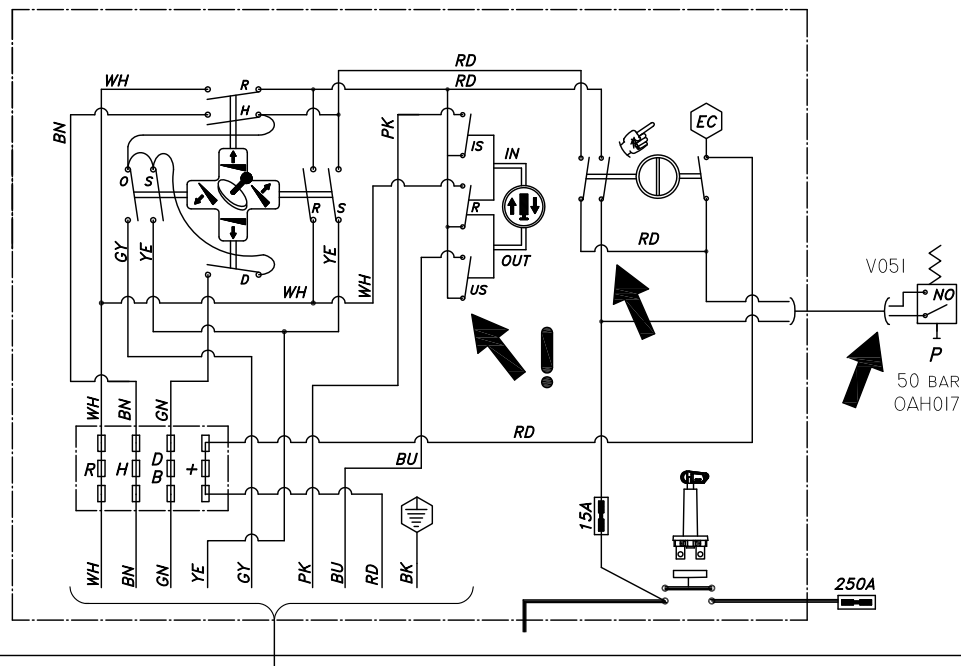
EXTERIOR CONTROL BOX REF. ED...



OPTION OAH017 ~ PRESSURE SWITCH ON STAB. LEGS OUT



EXTERIOR CONTROL BOX REF. ED...

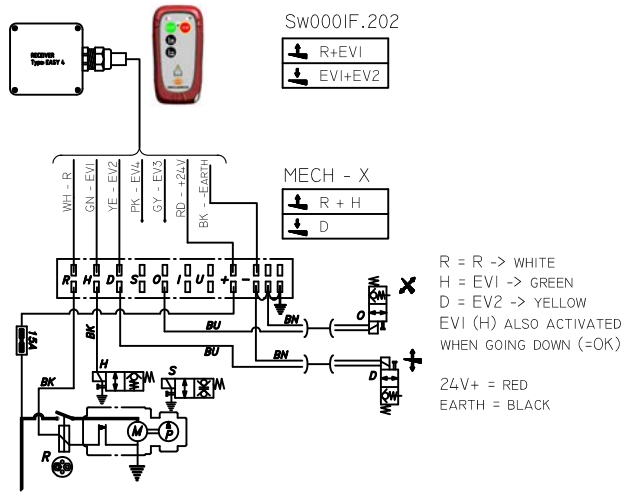


Type : OAH016 / OAH017 ** Pressure switch on stabilisers IN or OUT
 Power pack : -
 Plan N° : Sch_Extra-OAH016_OAH017-2013-01

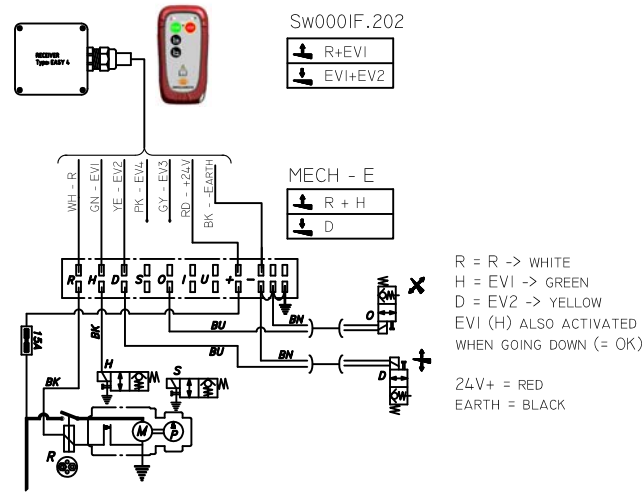
Valve : V012.X / V096.X / V141 + V093
 Date : 11/07/2014

E0452.S.2 ~ 2 BTN WIRELESS REMOTE CONTROL

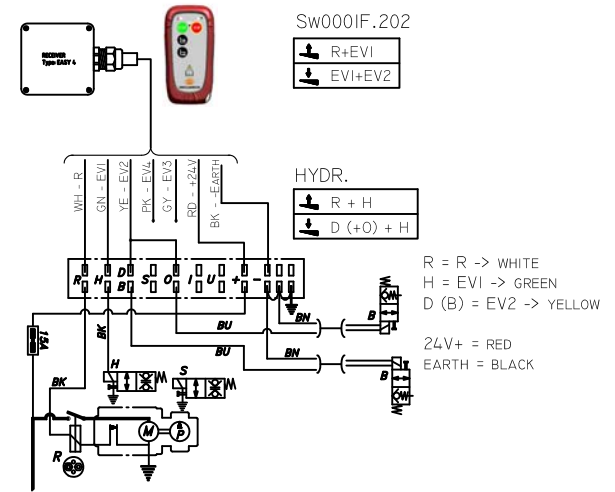
MECH - X



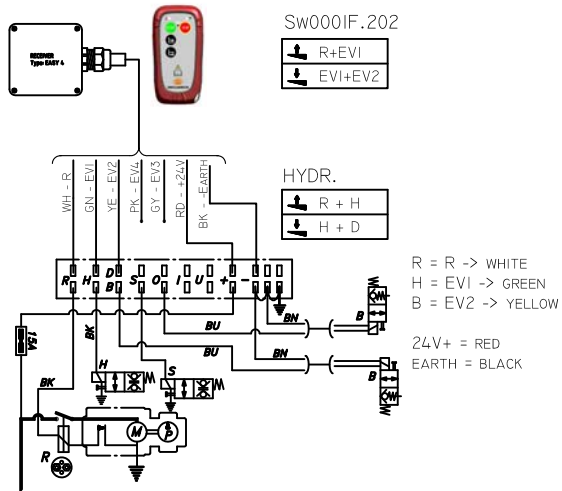
MECH - E



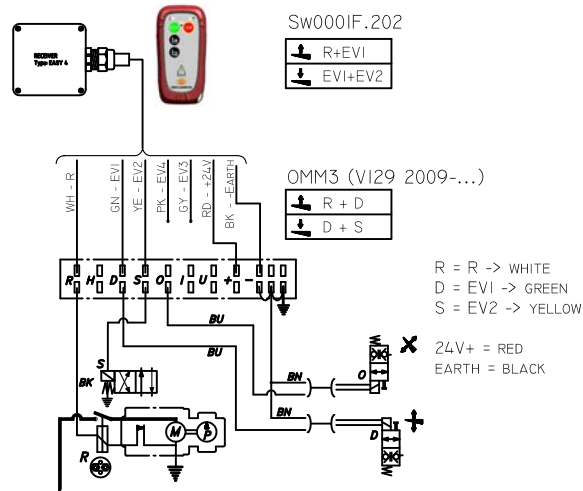
HYDR



MECH DW



OMM3 (VI29 2009-...)



Type : *Wiring schemes for E0452... wireless remote controls*

Power pack : -

Valve : -

Plan N° : *Sch_E0452 radio ctrl-2011-01*

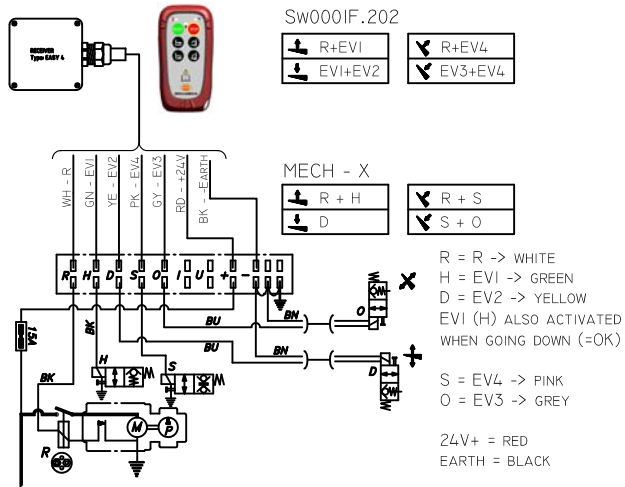
Date : *13/05/2011*

DIHOLLANDIA

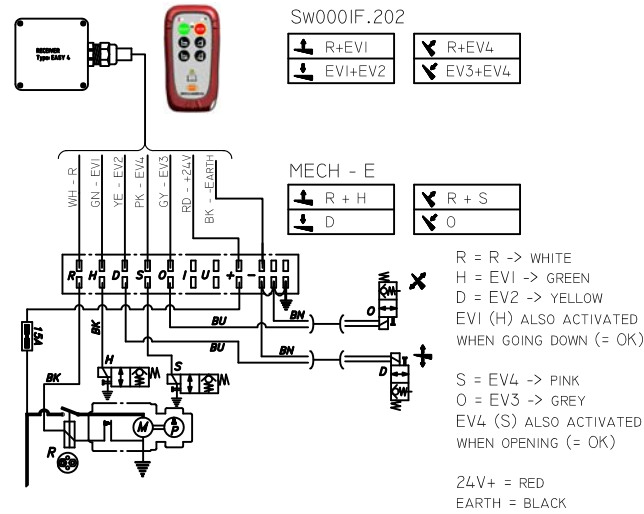


E0452.S.4 ~ 4 BTN WIRELESS REMOTE CONTROL

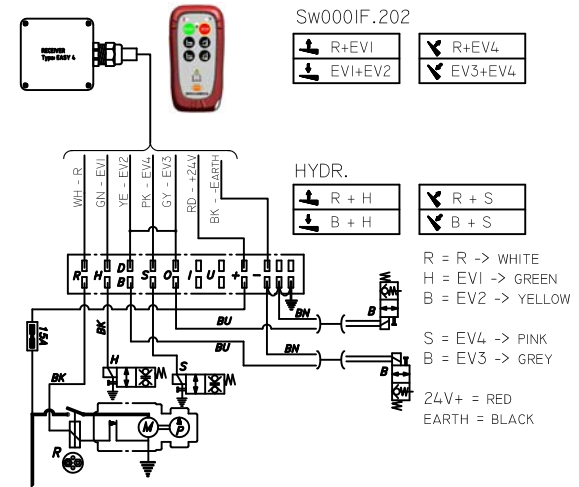
MECH - X



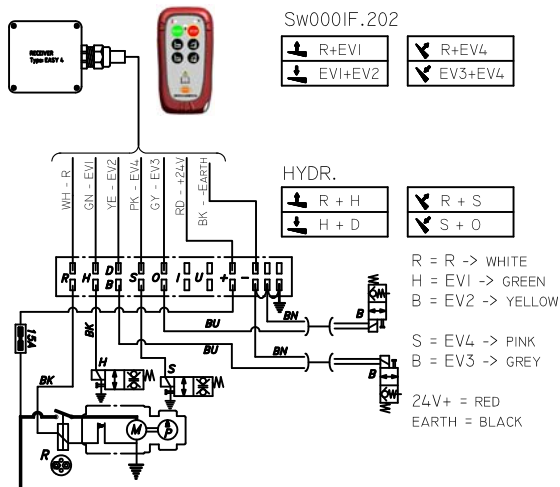
MECH - E



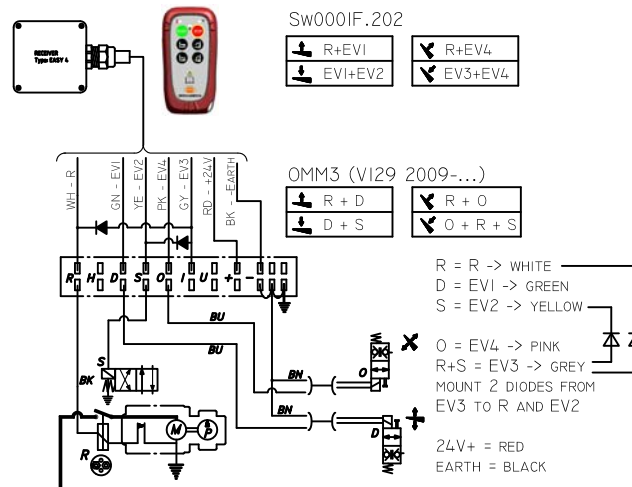
HYDR



MECH DW



OMM3 (VI29 2009-...)



Plan N° : Sch_E0452 radio ctrl-2011-01

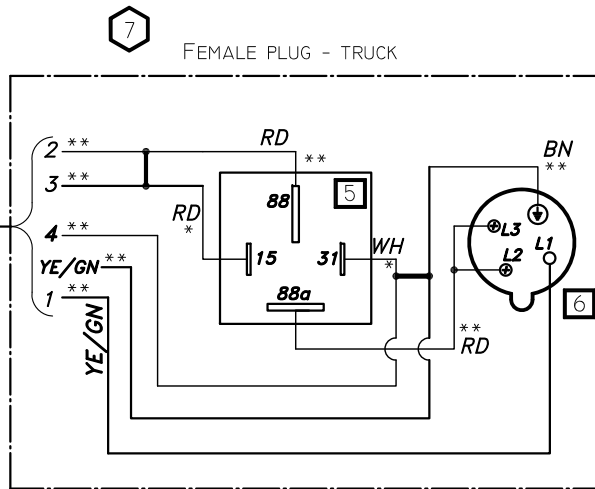
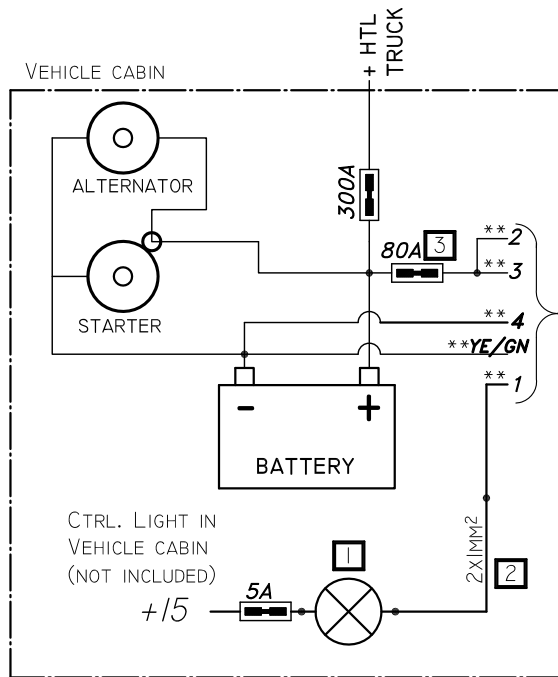
Type : Wiring schemes for E0452... wireless remote controls
 Power pack : -
 Valve : -

Date : 13/05/2011

DEHOLLANDIA

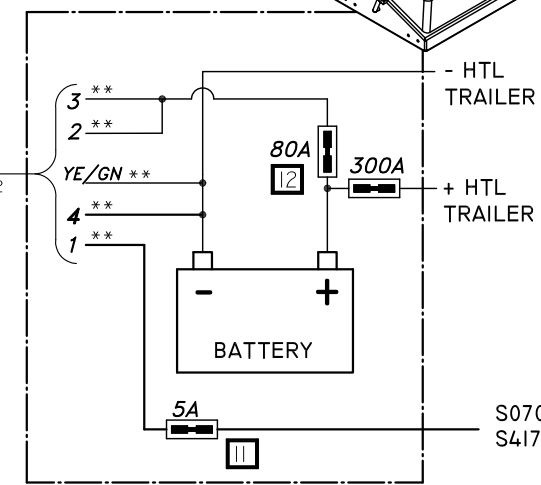
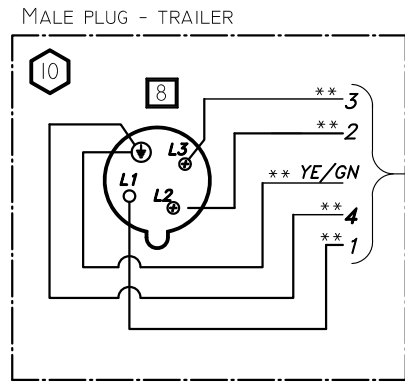
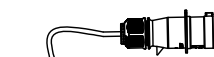
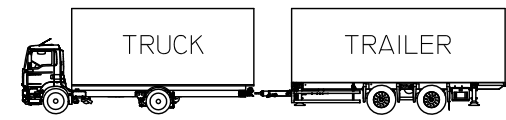
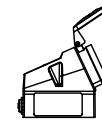


OAE403.24.02 ~ INVERSED CHARGING SYSTEM FOR SCHMITZ BALTIC LT - CHARGING RELAY ON TRUCK INSTEAD OF ON TRAILER 24V _ V02



INVERTED RELAY WIRING !

* = 1.5MM²
** = 4MM²



S070.R (LM...)
S417 (SM...)

OPTION OAE403.24.02	Q
1 = E0622	1
2 = E0012 (2x1 mm ²)	10M
7 = E0647.20	1
10 = E0646.17	1
11 = E0645 + E0032.05	1
12 = E0287.SD.300.075.35.8+6	1
NOTE: BATTERY BOX REF. 13 IS NOT INCLUDED IN THIS OPTION.	

ELECTRICAL ASSEMBLIES	
7	E0647.20 Q
4	E0511 (5x4 mm ²) 20M
5	E0648.24 1
5	E0644

EXCL. 3	
NORMALLY FORMS PART OF THE FUSE KIT E0287.SD.300.075.35.8+6 OF THE TRUCK HTL	

10	E0646.17 Q
8	E0640 01
9	E0511 (5x4mm ²) 17M

Type : Inversed charging system for TRAILER batteries - 2012/...

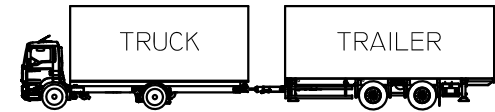
Power pack : n.a.

Valve : n.a.

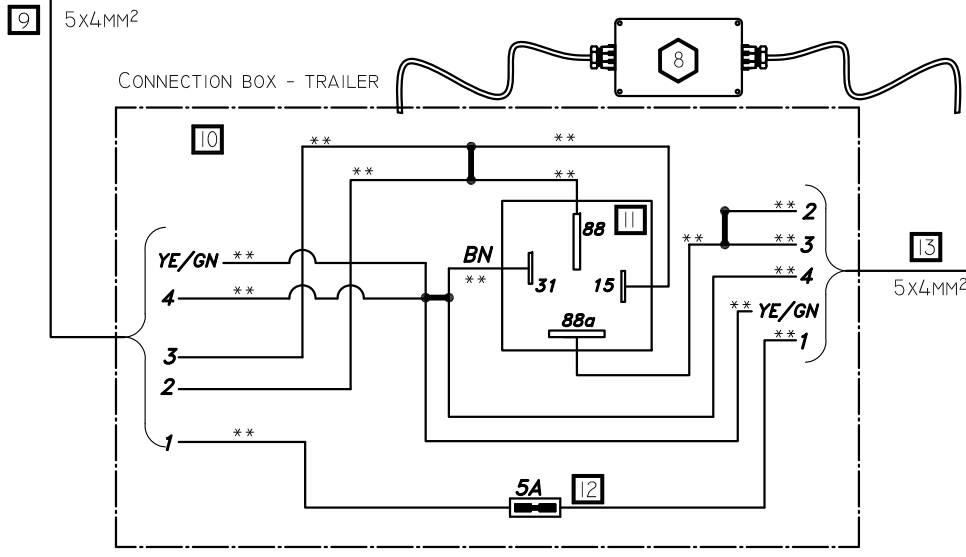
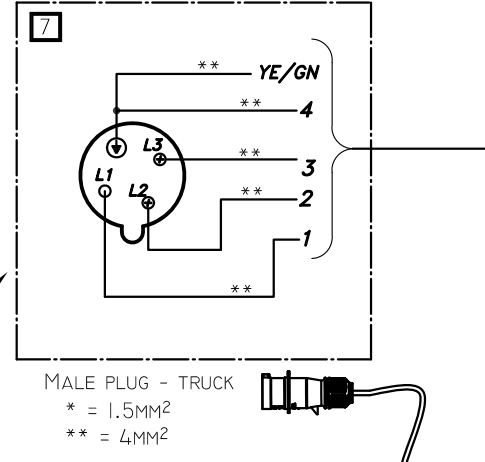
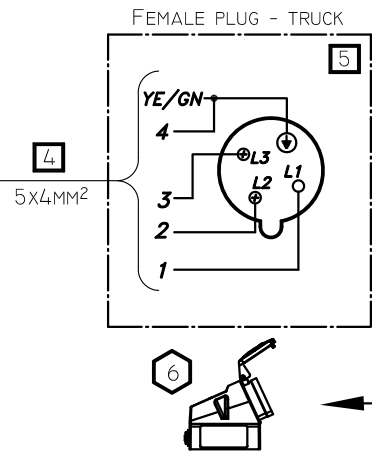
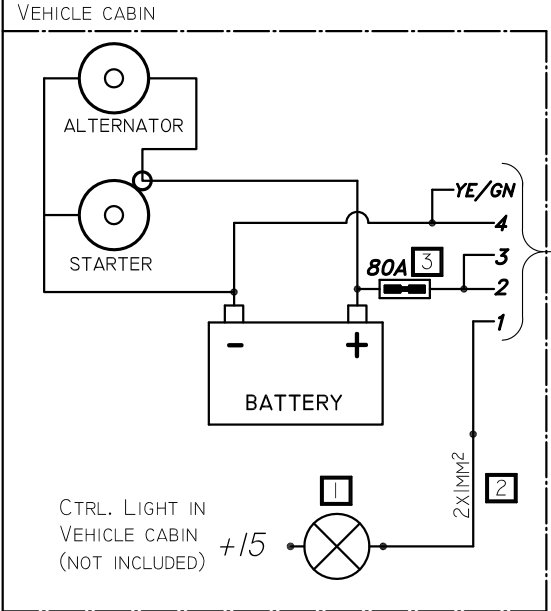
Plan N° : Sch_Extra-OAE403.24.02 Truck_trailer INV-2013-01 Date : 17/01/2013

DHOLLANDIA

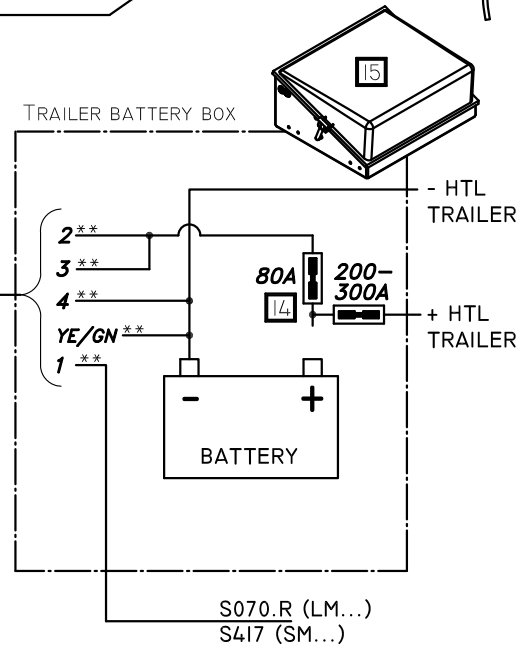
OPTION OAE403.24.01 ~ BATTERY EQUIPMENT + CHARGING RELAY 24V _ V01



Type : Charging system for TRAILER batteries with charging relay
 Power pack :
 Valve :
 Plan N° : Sch_Extra-OAE403.24.01 Truck_trailer-2013-01
 Date : 02/01/2013



* = 1.5mm²
 ** = 4mm²



OPTION OAE403.24.01	Q
1 = E0622	1
2 = E0012 (2x1 mm²)	10M
3 = E0290	1
6 = E0644.S.10	1
7 = E0640	1
8 = E0649.24.S.14.02	1
14 = E0290	1

NOTE: BATTERY BOX REF. 15 IS NOT INCLUDED IN THIS OPTION.

ELECTRICAL ASSEMBLIES

6 E0644.S.10	Q
4 = E0511 (5x4 mm²)	10M
5 = E0644	1

8 E0649.24.S.14.02	Q
9 = E0511	14M1
10 = ? BOX ?	1
11 = E0648.24	1
12 = E0645 + E0032.05	1+1
13 = E0511	2M

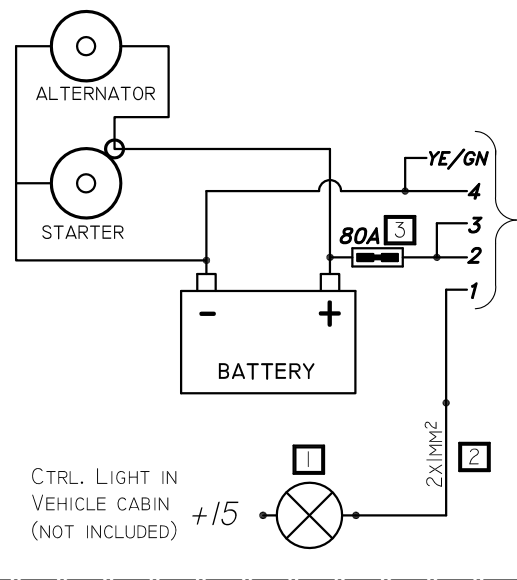
DEOLANDIA



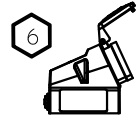
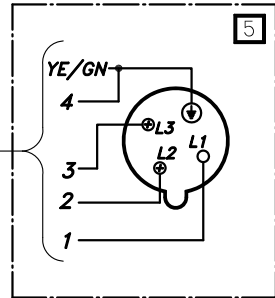
2012/...

OPTION OAE402.24.01 ~ BATTERY EQUIPMENT + CHARGING RELAY 24V _ V01

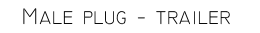
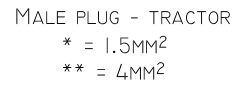
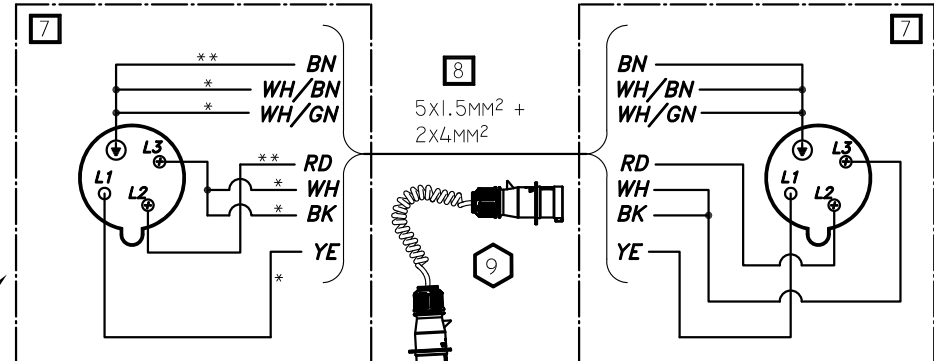
VEHICLE CABIN



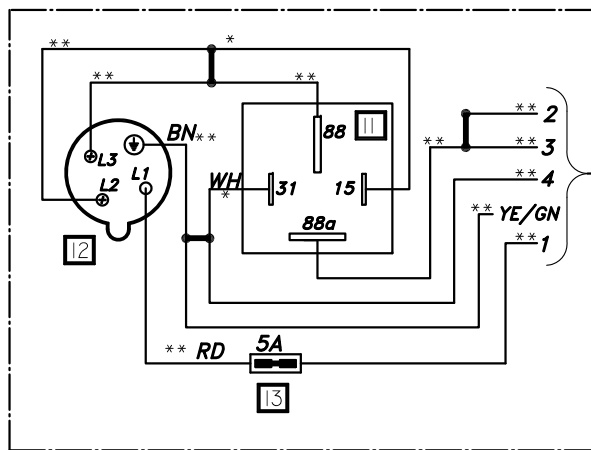
FEMALE PLUG - TRACTOR



SPIRAL CABLE CONNECTION

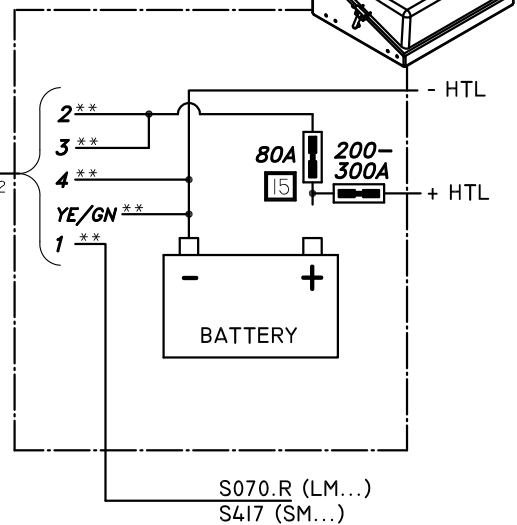


FEMALE PLUG - TRAILER



* = 1.5mm²
** = 4mm²

TRAILER BATTERY BOX



ELECTRICAL ASSEMBLIES

6	E0644.S.04	Q
4	= E0511 (5x4 mm ²)	4M
5	= E0644	1
9	E0641.S.D	Q
7	= E0640	2
8	= E0512	1
10	E0643.24.S.20	Q
11	= E0648.24	1
12	= E0644	1
13	= E0645 + E0032.05	1+1
14	= E0511	20M

OPTION OAE402.24.01

Q

- 1 = E0622
- 2 = E0012 (2x1 mm²)
- 3 = E0290

5M

- 6 = E0644.S.04
- 9 = E0641.S.D
- 10 = E0643.24.S.20
- 15 = E0290

NOTE: BATTERY BOX REF. 16 IS NOT INCLUDED IN THIS OPTION.



Type : Charging system for SEMI-TRAILER batteries with charging relay - 2012/...

Power pack :

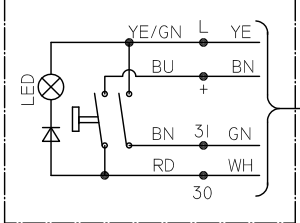
Valve :

Plan N° : Sch_Extra-OAE402 Tractor_semitrailer-2013-01

Date : 02/01/2013

DEOLANDIA

OAE206 BATTERY GUARD RELAY E0381.12 / E0381.24 ON OAE030.Z + OAE500 + OAE503

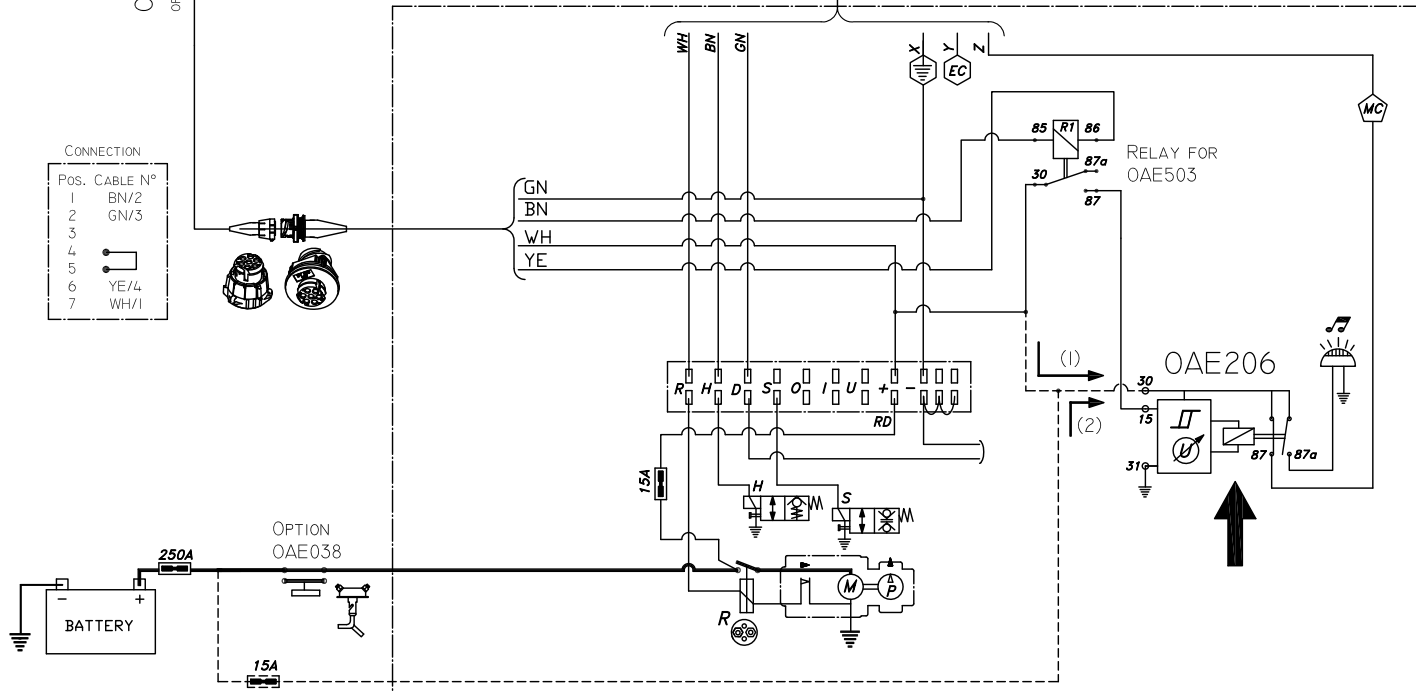


OAE503 : CABIN SWITCH

OAE500 (CANNON PLUG)
OR OAE501.12 (12M 4X1,5)

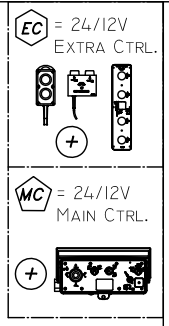
CONNECTION

Pos.	CABLE N°
1	BN/2
2	GN/3
3	
4	
5	YE/4
6	
7	WH/1



OAE030.Z

EXTERIOR CONTROL BOX REF. EC...



(1) STANDARD CONFIG: PIN 30 OF OAE206 LINKED TO PIN 30 OF RELAY FOR OAE503
(2) IF V-DROP FROM BATTERIES IS TOO BIG, PIN 30 (OAE206) NEEDS TO BE CONNECTED WITH SEPARATE CABLE TO MAIN BATTERY FUSE

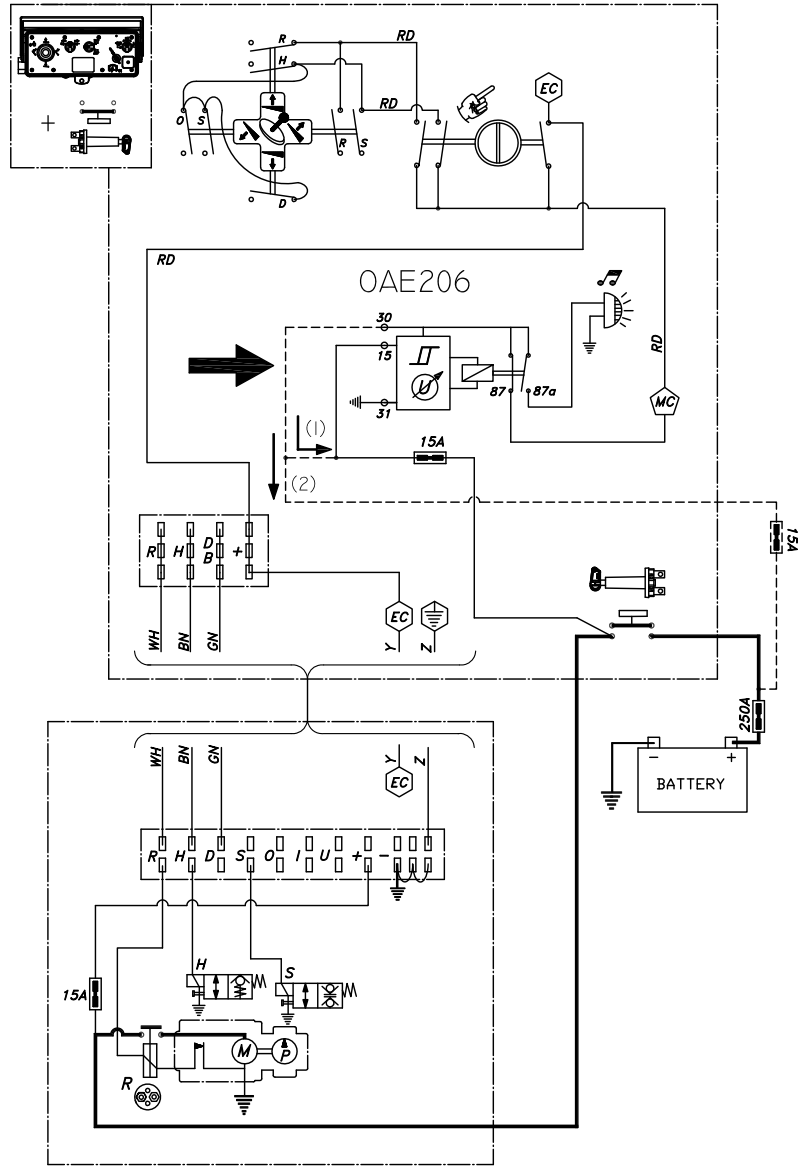


Type : OAE206 ** Battery guard E0381.12/24 on control wiring (low Amp)	Valve : -	Date : 07/07/2014	
Power pack : -	Plan N° : Sch_Extra-OAE206-2014-02		

OAE206 BATTERY GUARD RELAY E0381.12 / E0381.24

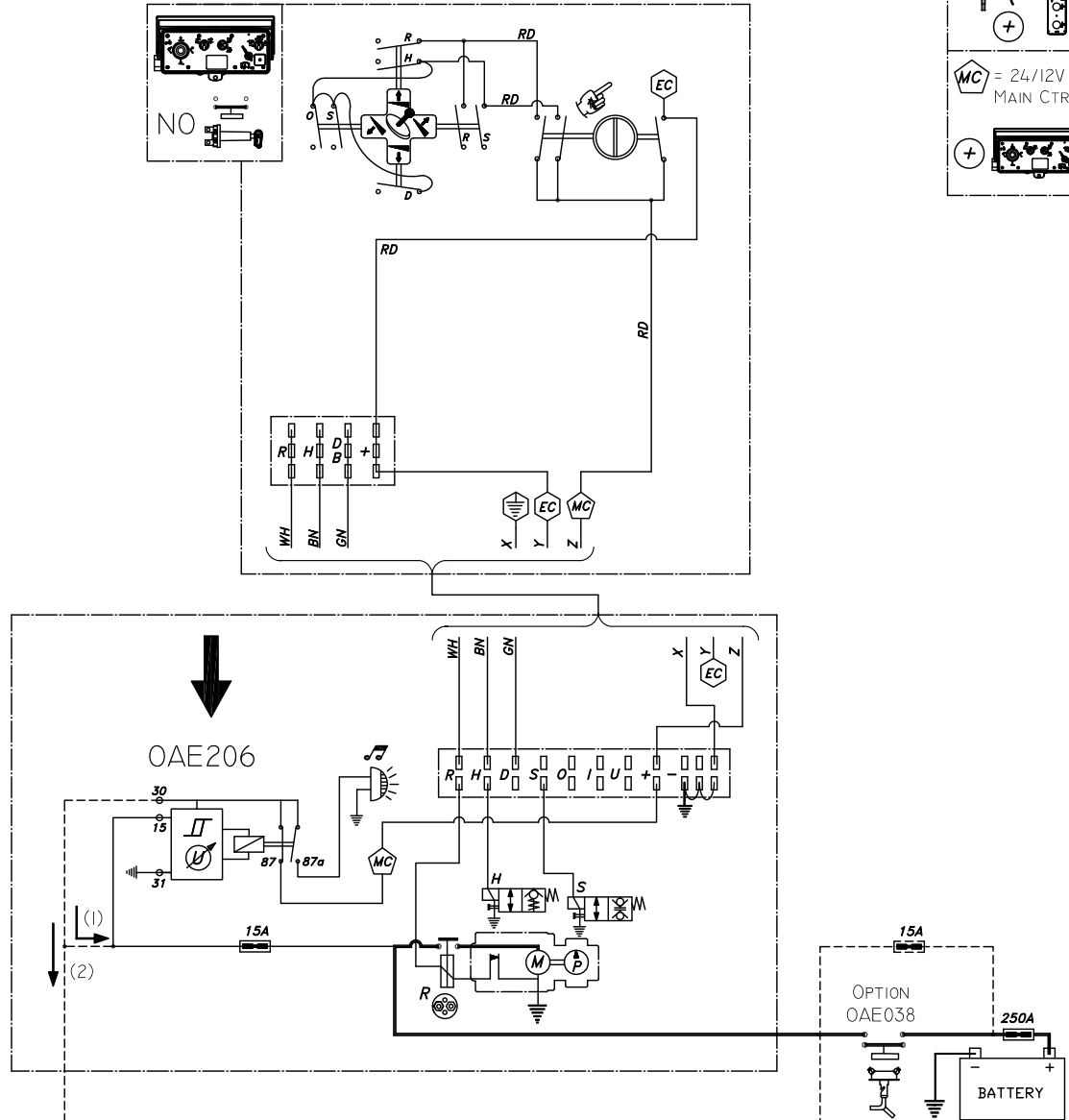
OAE030.B

EXTERIOR CONTROL BOX REF. ED...



OAE030.Z

EXTERIOR CONTROL BOX REF. EC...



EC = 24/12V
EXTRA CTRL.

MC = 24/12V
MAIN CTRL.

Type : OAE206 ** Battery guard E0381.12/24 on control wiring (low Amp)

Power pack : -

Valve : -

Plan N° : Sch_Extra-OAE206-2014-01

Date : 07/07/2014

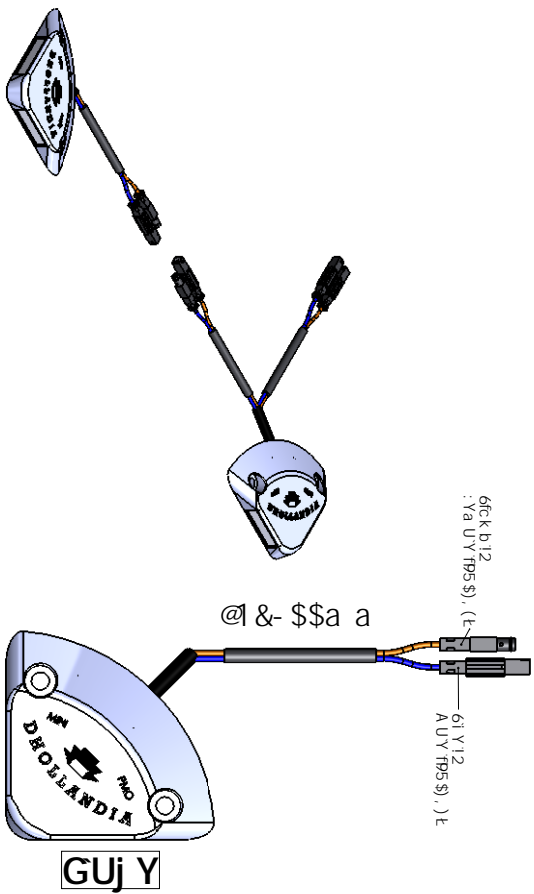
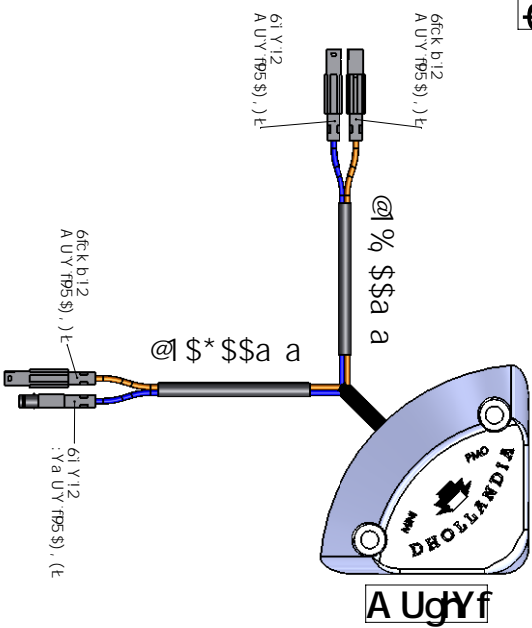
DHOLLANDIA



- (1) STANDARD CONFIG: PIN 30 LINKED TO PIN 15
- (2) IF V-DROP FROM BATTERIES IS TOO BIG, PIN 30 NEEDS TO BE CONNECTED WITH SEPARATE CABLE TO MAIN BATTERY FUSE

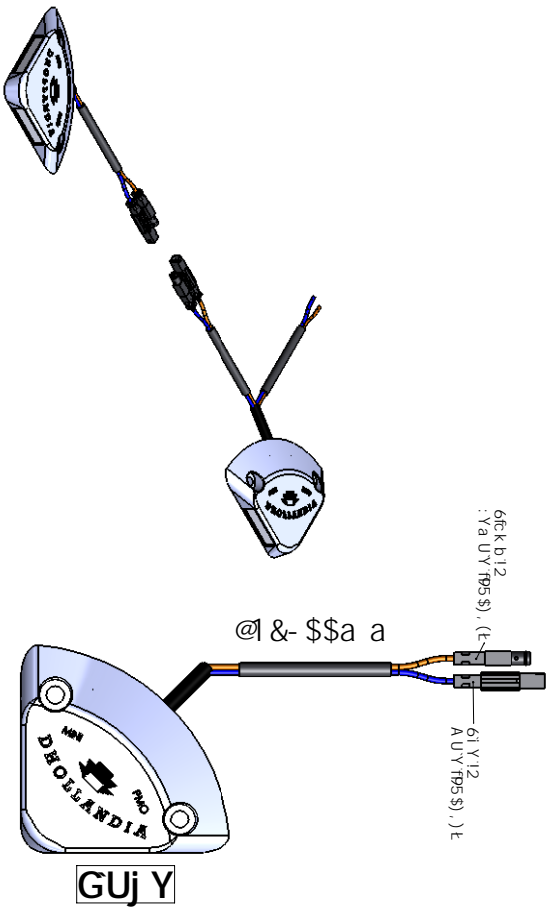
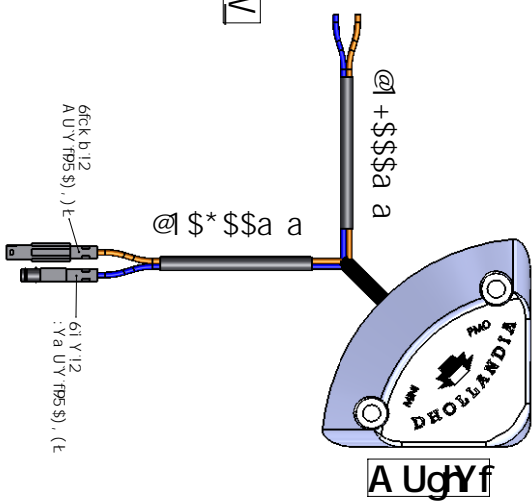
95 \$&, ' 10% \$\$\$

: cch7 cbhc



95 \$&, ' " + \$\$\$

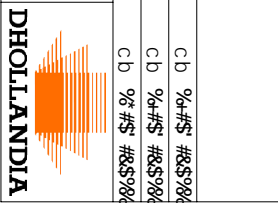
DCK YFDUW



8ja Ybdc bg	Yb "tc YRUbW.
8B-EC &+*, ia	8B-EC &+*, ia

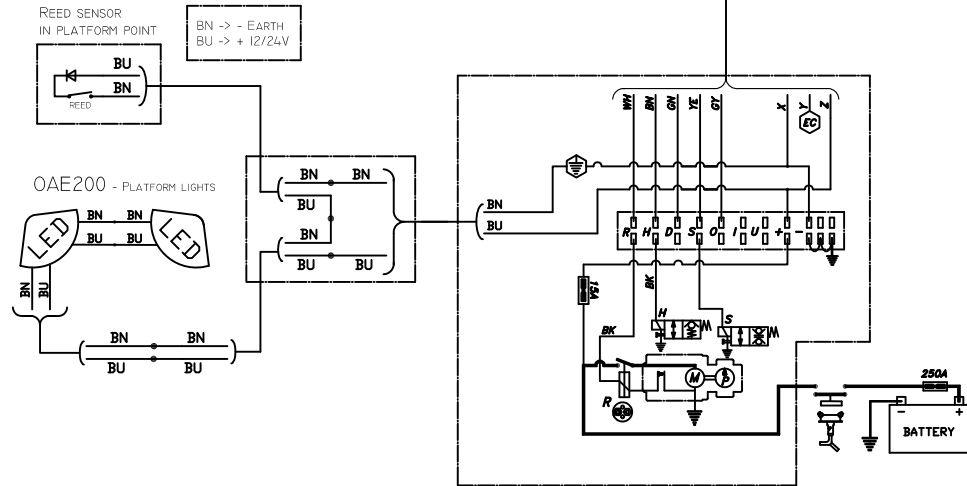
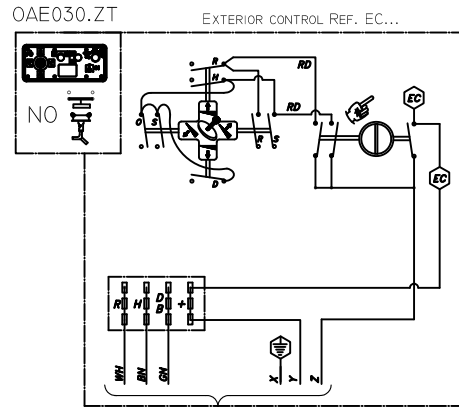
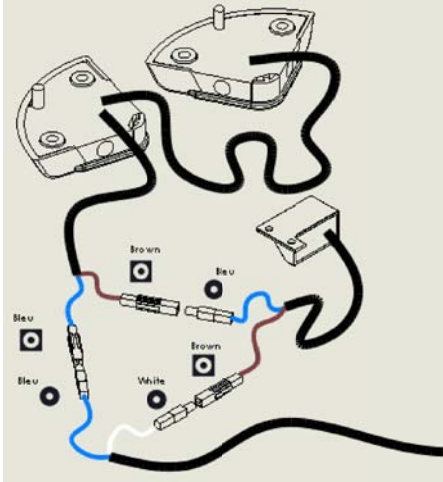
: JY bf. 95 \$&, ' 10% \$\$\$ + \$\$\$ 8ruk "bf 95 \$&, ' 10% \$\$\$ + \$\$\$	FYj qcb.
DufhXYgmfdhc b.	5 %
7 ihcZYbl h. rY a a H\WbYg	7 h " B \$ 7H
Gcruj Y dUVW.	Gcruj Y 6cl. : K Y \h
A 5HP 5@	GNY. 5 (
7cXY.	Ei U "m
8Ygmfdhc b. Ductca jwkhgfh+\$\$\$ a	Dul Y. %C. %

FYa Ufg Cda Yf_jl	Eddfcj YX Vm _VY	cb % # \$ # \$ \$ %
	7 \Ub [YX Vm _VY	cb % # \$ # \$ \$ %
	8ruk b Vm	cb % # \$ # \$ \$ %
	Bcha jl wdb ubx. a Umny wcdyx zca hbxruk pl	



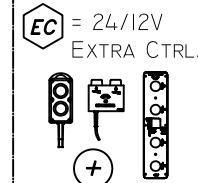
OAE200 ON LIFTS TYPE DH-S*

③ No BATTERY SWITCH ~ OAE030.ZT + REED SENSOR IN PLATFORM POINT



COLOUR CODES
DIN 47100

- 1=WH
- 2=BN
- 3=GN
- 4=YE
- 5=GY
- 6=PK
- 7=BU
- 8=RD
- 9=BK



Type : Schemes to switch off OAE200 platform lights on DH-S* lifts

Power pack : -

Valve : -

Plan N° : Sch_Extra-OAE200-DHS-2013-02

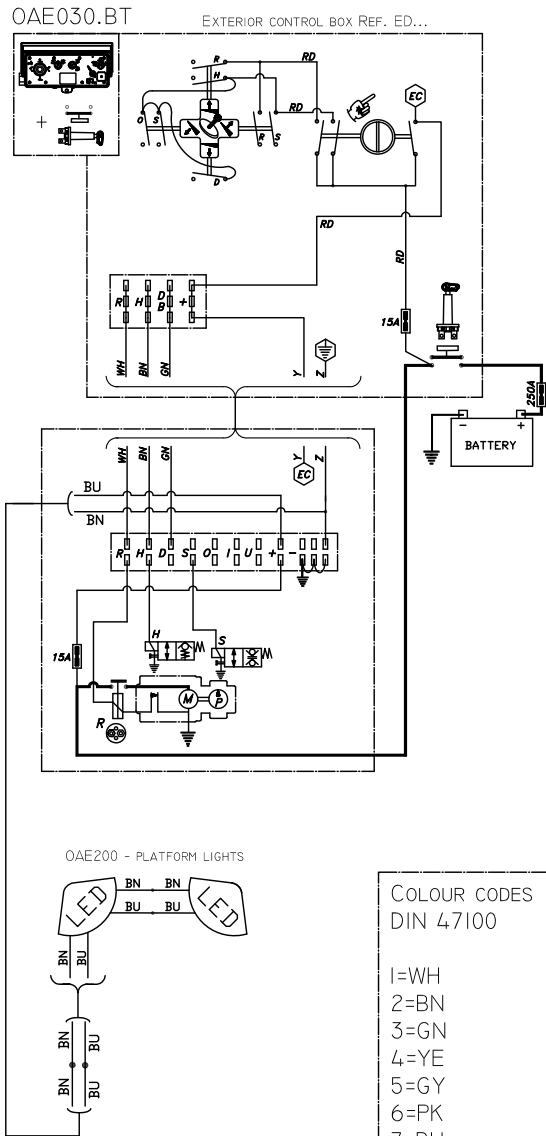
Date : 06/01/2014

DEHOLLANDIA



OAE200 ON LIFTS TYPE DH-S*

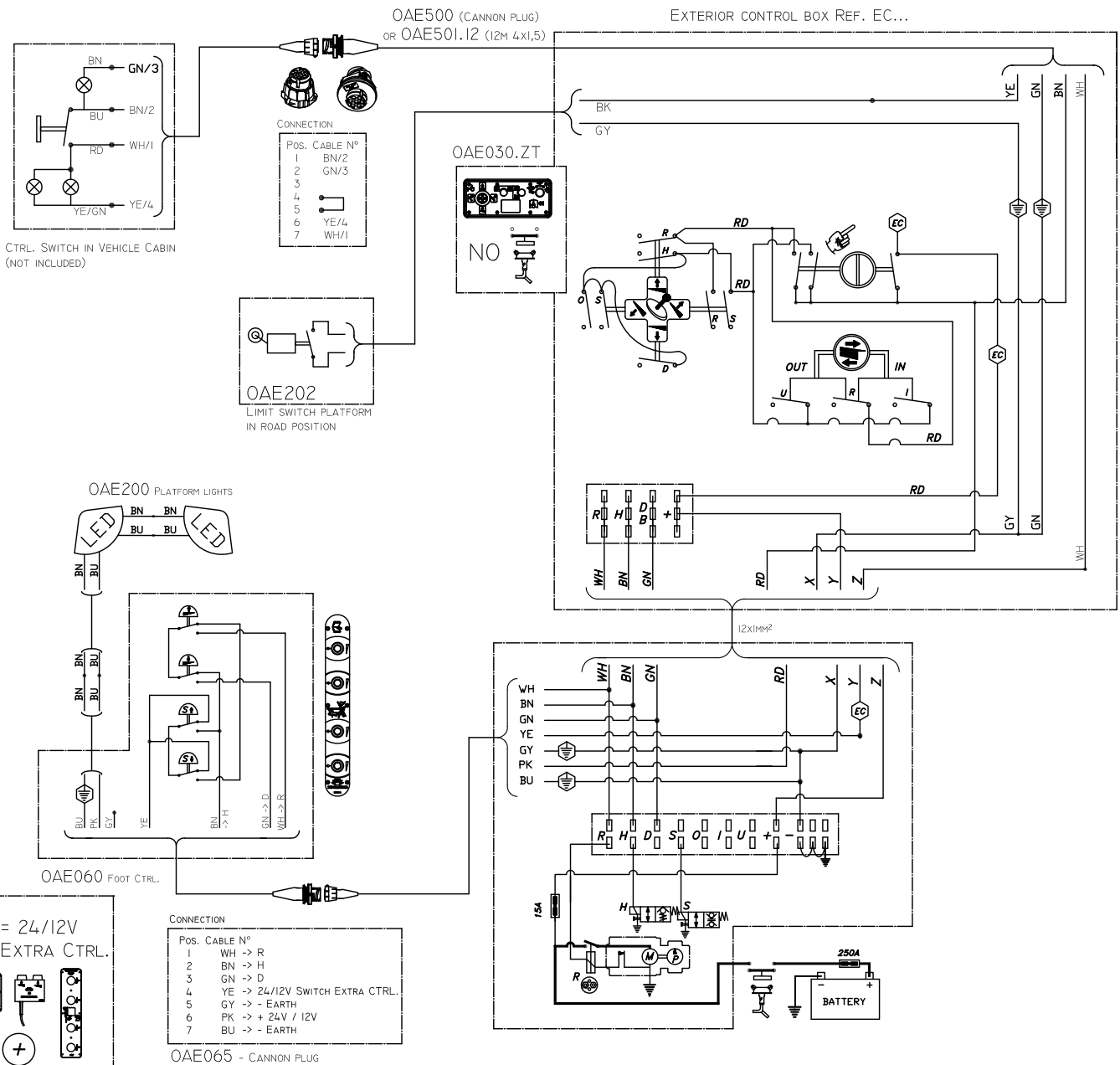
① + BATTERY SWITCH ~ OAE030.BT



COLOUR CODES
DIN 47100

- 1=WH
- 2=BN
- 3=GN
- 4=YE
- 5=GY
- 6=PK
- 7=BU
- 8=RD
- 9=BK

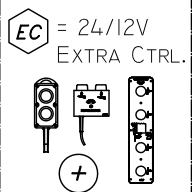
② No BATTERY SWITCH ~ OAE030.ZT + OAE060 + OAE202 + OAE500



CONNECTION

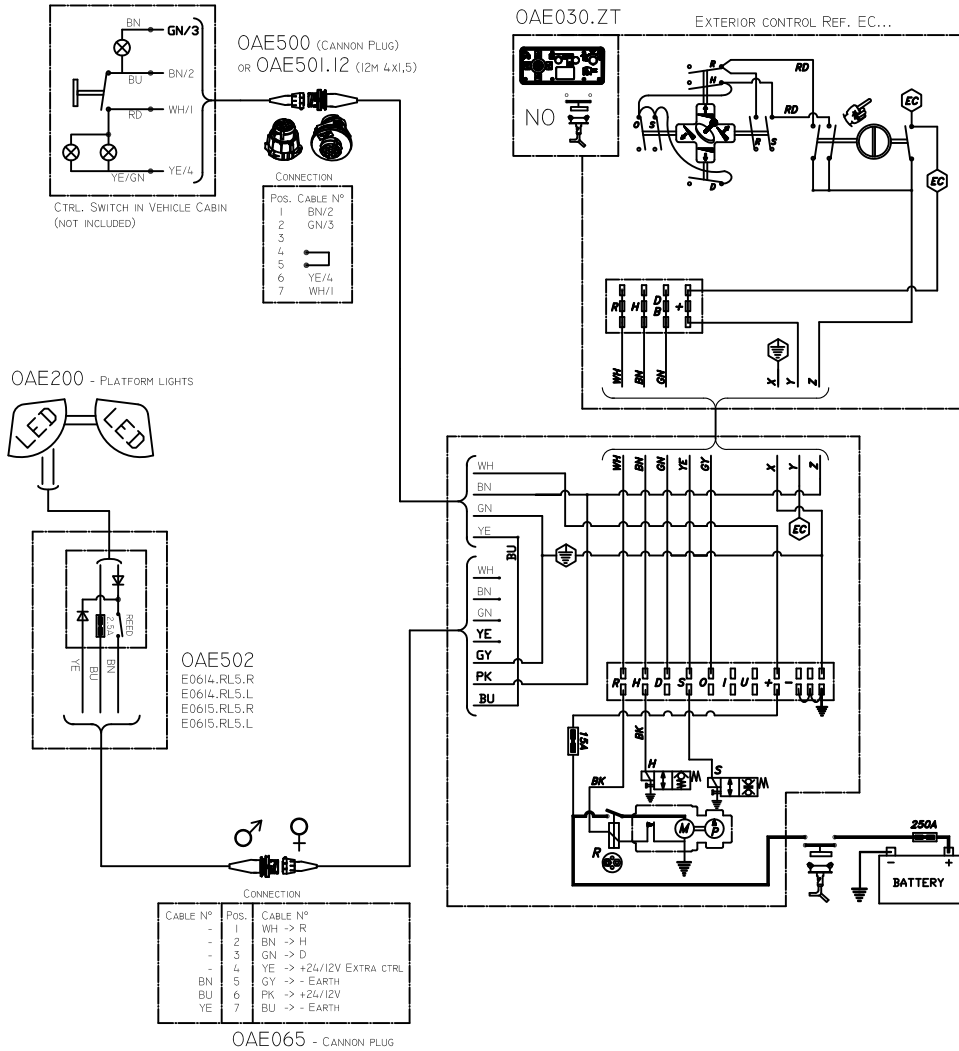
Pos.	CABLE N°
1	WH → R
2	BN → H
3	GN → D
4	YE → 24/12V Switch EXTRA CTRL.
5	GY → - EARTH
6	PK → + 24V / 12V
7	BU → - EARTH

OAE065 - CANNON PLUG

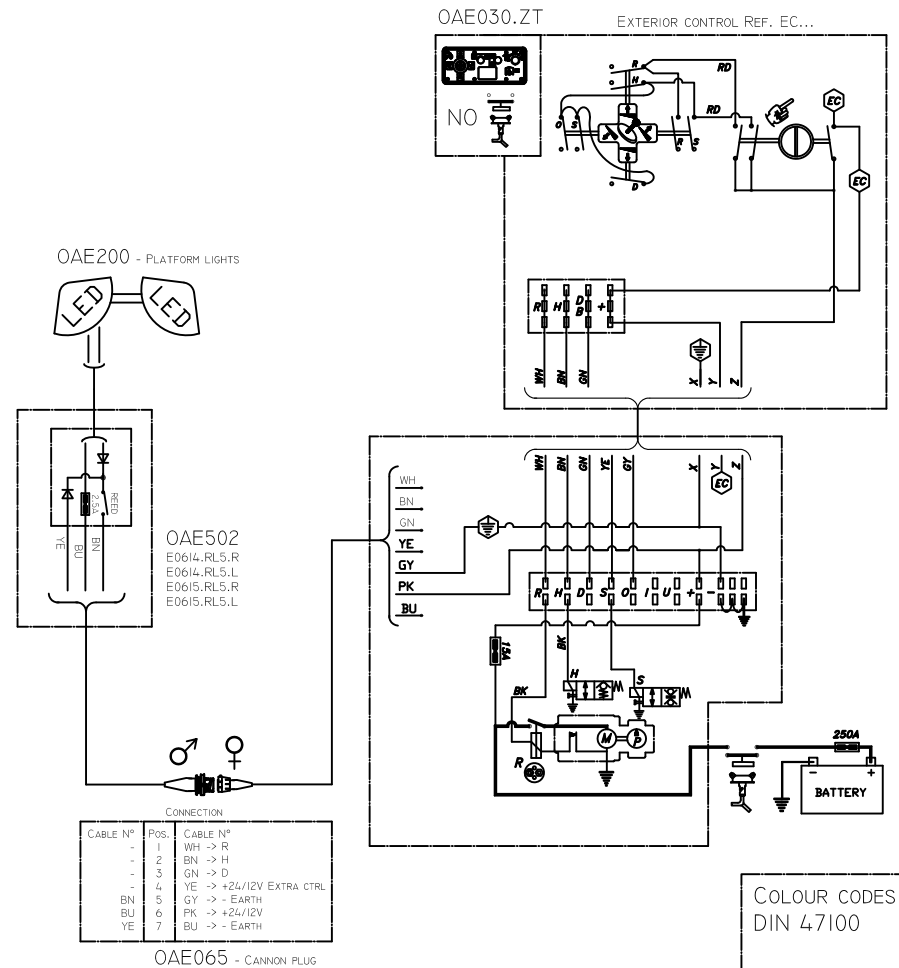


OAE200 ON LIFTS TYPE DH-L*

③ No BATTERY SWITCH ~ OAE030.ZT + OAE500 + OAE502

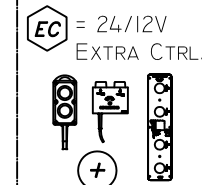


④ No BATTERY SWITCH ~ OAE030.ZT + OAE502



COLOUR CODES
DIN 47100

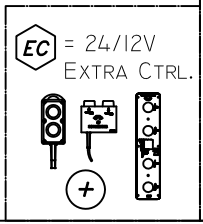
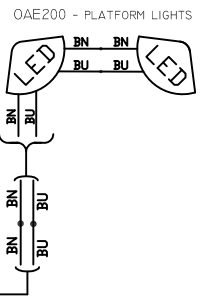
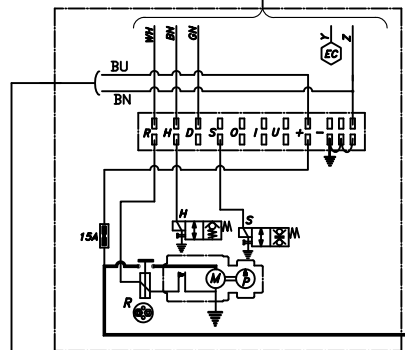
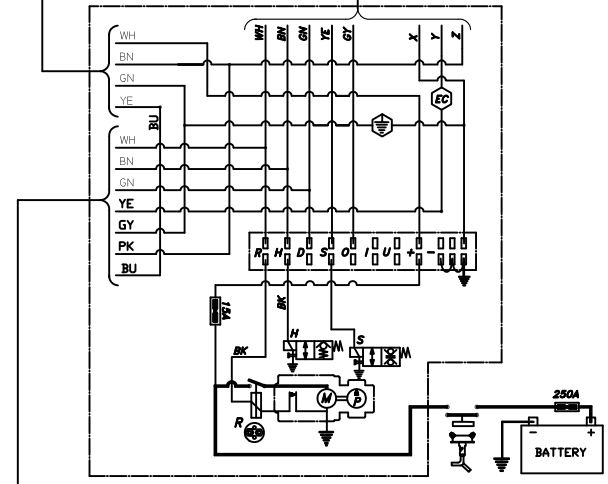
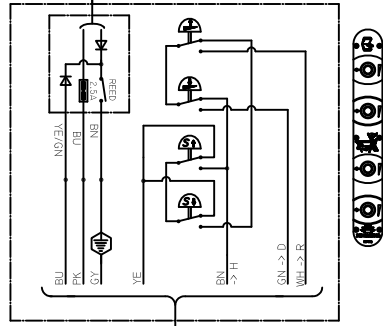
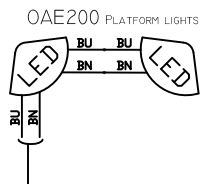
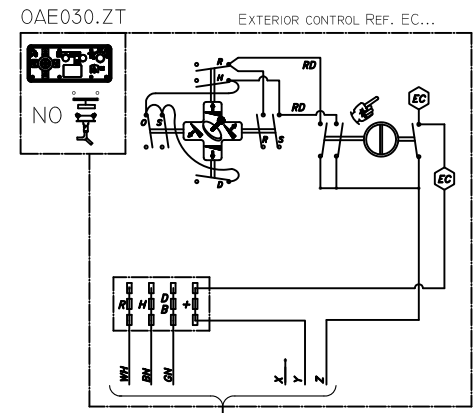
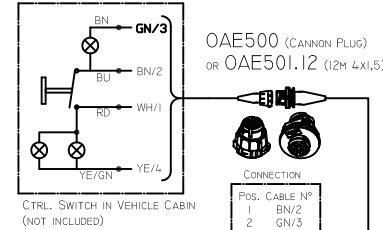
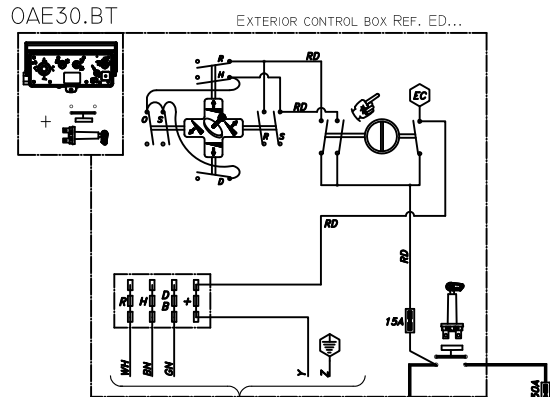
- 1=WH
- 2=BN
- 3=GN
- 4=YE
- 5=GY
- 6=PK
- 7=BU
- 8=RD
- 9=BK



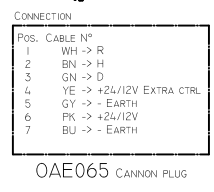
OAE200 ON LIFTS TYPE DH-L*

① + BATTERY SWITCH ~ OAE030.BT

② No BATTERY SWITCH ~ OAE030.ZT + OAE064 + OAE500

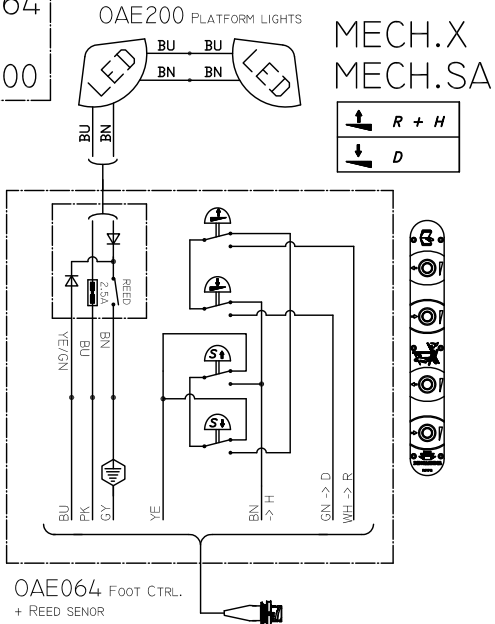


- COLOUR CODES
DIN 47100
- 1=WH
 - 2=BN
 - 3=GN
 - 4=YE
 - 5=GY
 - 6=PK
 - 7=BU
 - 8=RD
 - 9=BK

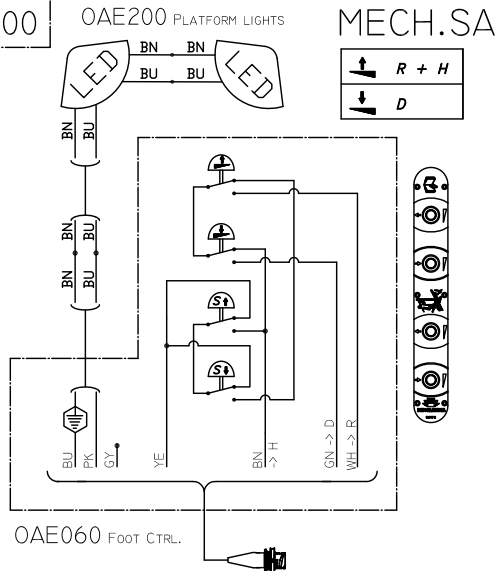


FOOT CONTROLS OAE060 & OAE064 (+ REED SENSOR)

OAE064
+
OAE200

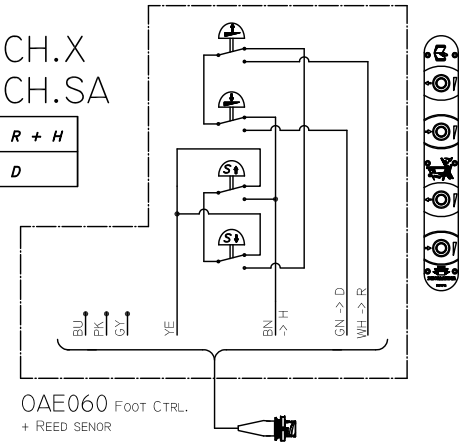
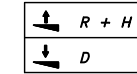


OAE060
+
OAE200



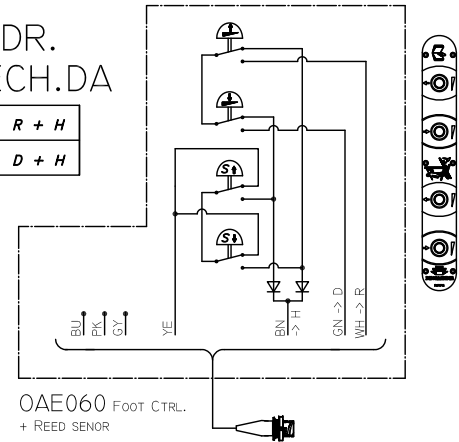
OAE060

MECH.X
MECH.SA

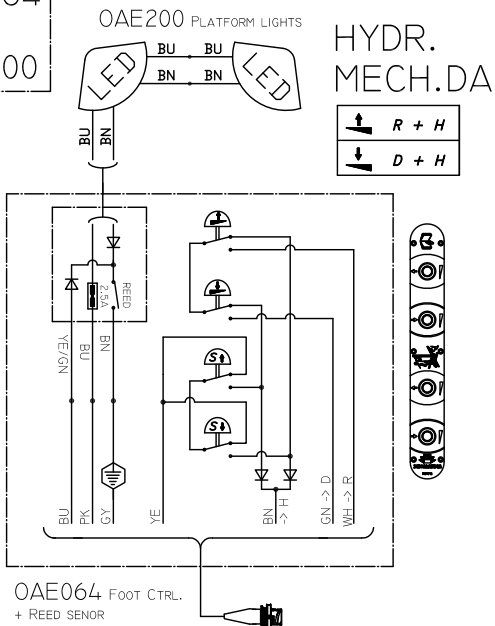


OAE060

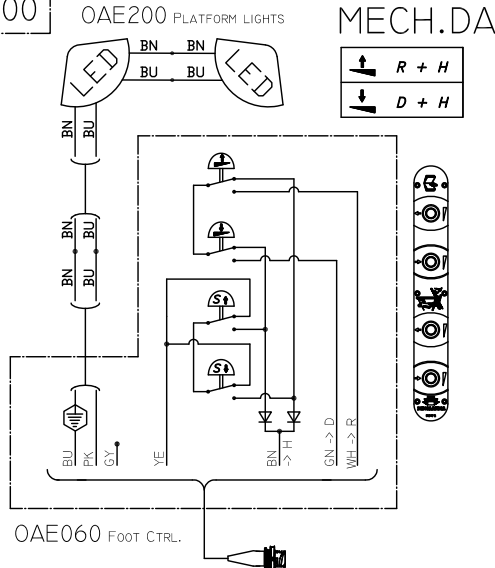
HYDR.
MECH.DA



OAE064
+
OAE200



OAE060
+
OAE200



COLOUR CODES
DIN 47100

1=WH
2=BN
3=GN
4=YE
5=GY
6=PK
7=BU
8=RD
9=BK

EC = 24/12V
EXTRA CTRL.

CONNECTION

Pos.	CABLE N°
1	WH -> R
2	BN -> H
3	GN -> D
4	YE -> +24/12V EXTRA CTRL
5	GY -> - EARTH
6	PK -> +24/12V
7	BU -> - EARTH

OAE065 CANNON PLUG

Type : OAE060 & OAE064 ** 4-button foot controls on platform
Power pack : -
Valve : -
Plan N° : Sch_Extra-OAE060_OAE064-2013-01

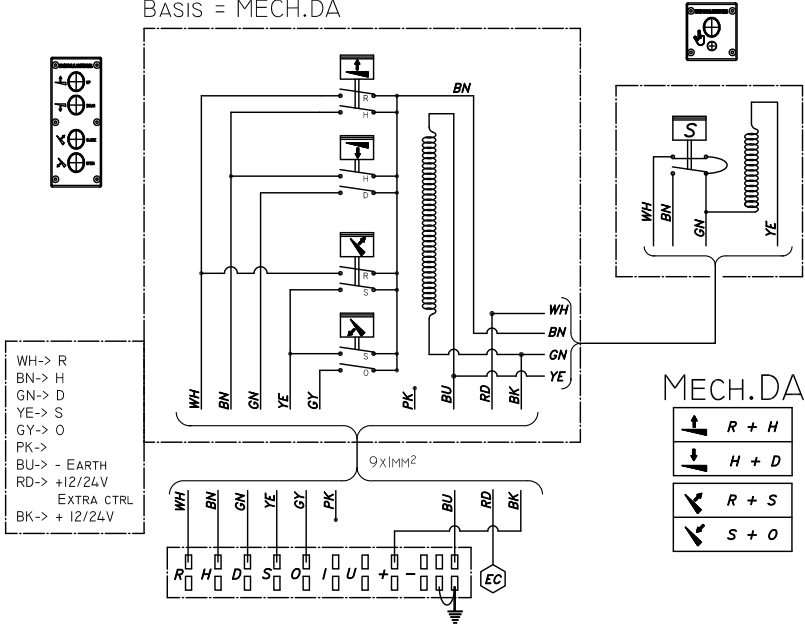
Date : 02/01/2014

DHOLLANDIA

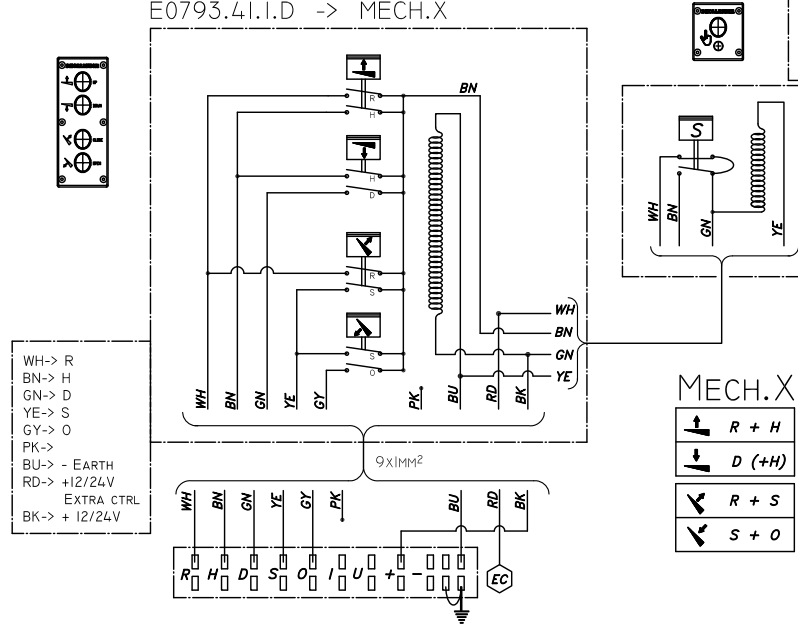


OPTION OAE035.Z ~ 4+1 BUTTON CONTROL + HEAT RESISTOR OAE034

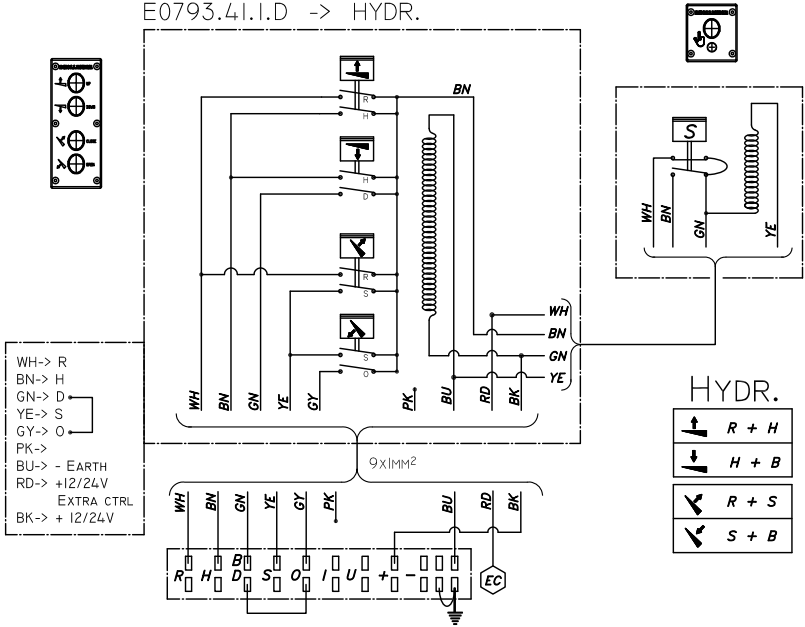
CONTROL BOX E0793.41.I.D
BASIS = MECH.DA



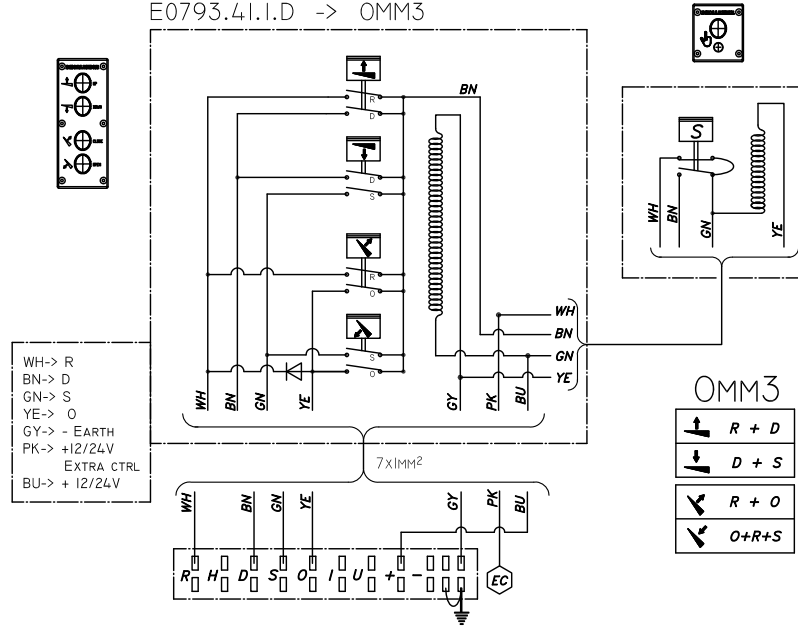
E0793.41.I.D -> MECH.X



E0793.41.I.D -> HYDR.

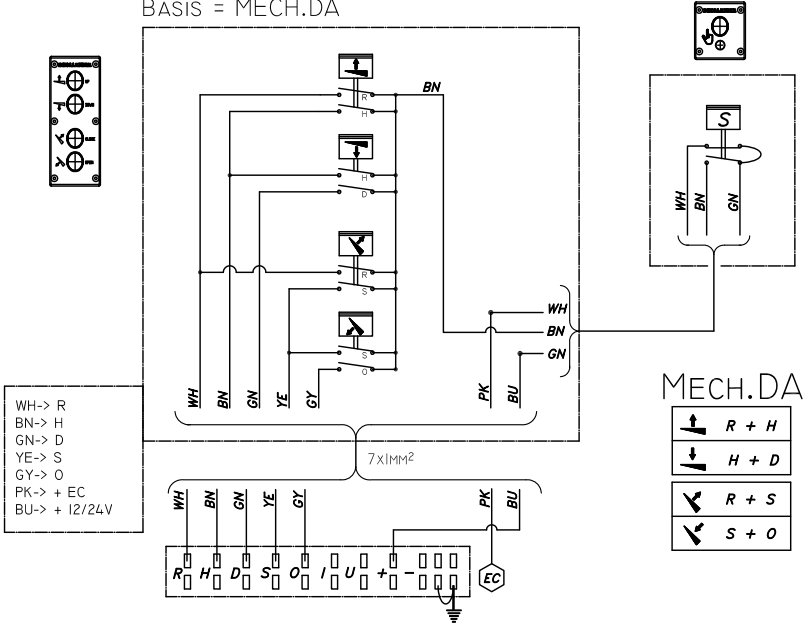


E0793.41.I.D -> OMM3

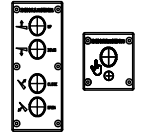
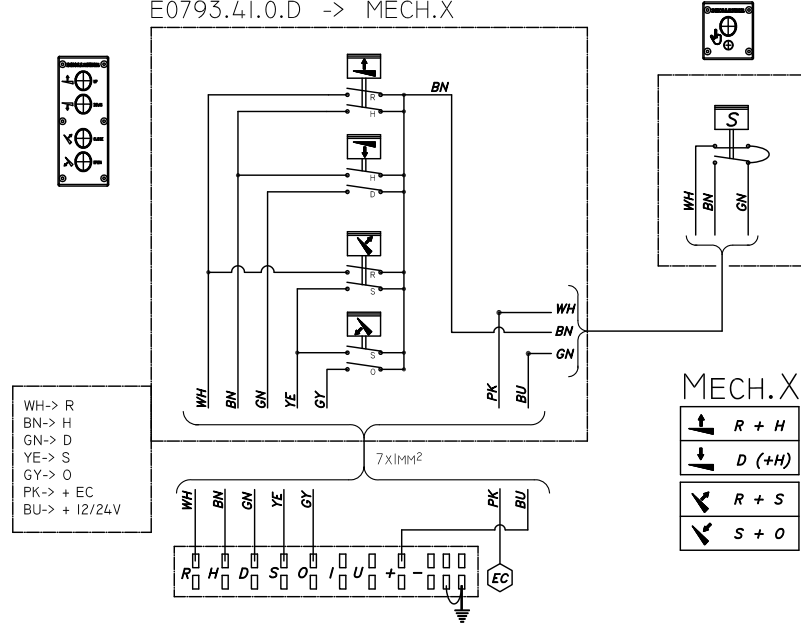


OPTION OAE035.Z ~ 4+1 BUTTON CONTROL

CONTROL Box E0793.41.0.D
BASIS = MECH.DA



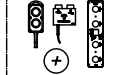
E0793.41.0.D -> MECH.X



COLOUR CODES
DIN 47100

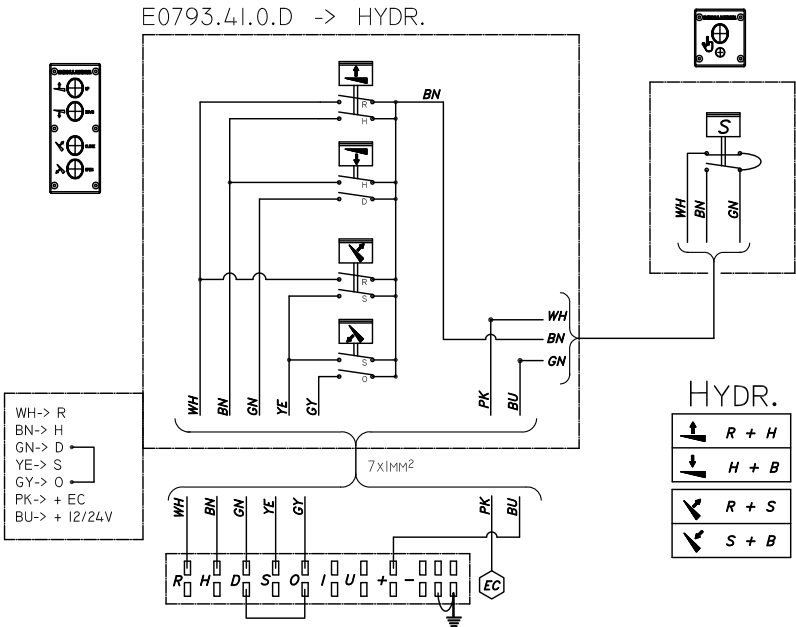
- 1-WH
- 2-BN
- 3-GN
- 4-YE
- 5-GY
- 6-PK
- 7-BU
- 8-RD
- 9-BK

EC = 24/12V
EXTRA CTRL.

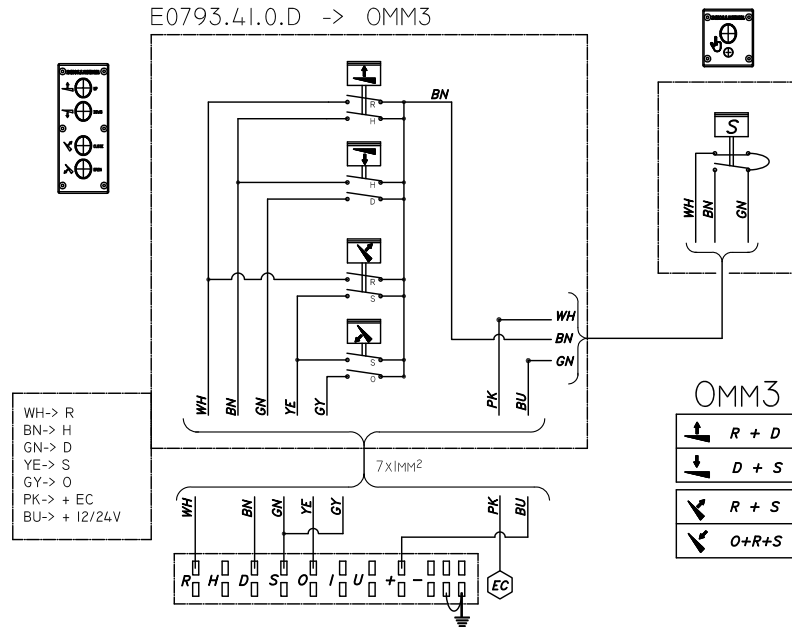


Type : OAE035.Z ** 4+1 button exterior controls
Power pack : -
Valve : -
Plan N° : Sch_Extra-OAE035.Z-2013-01

E0793.41.0.D -> HYDR.



E0793.41.0.D -> OMM3



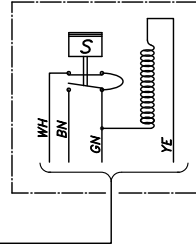
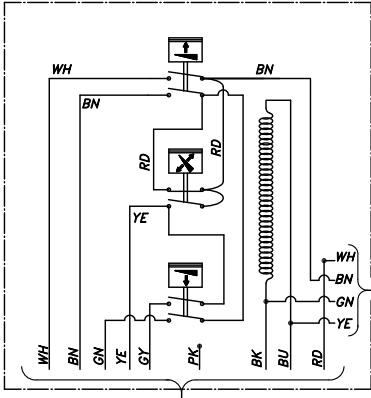
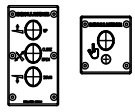
Date : 07/07/2014

DEHOLLANDIA



OPTION OAE031.Z ~ 3+1 BUTTON CONTROL + HEAT RESISTOR OAE034

E0793.31.1.M



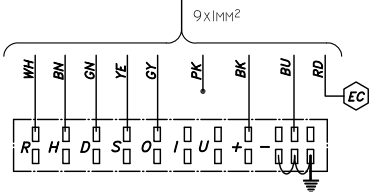
MECH.SA

↑	R + H
↓	D
↙	R + S
↘	O (+S)

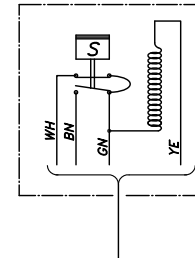
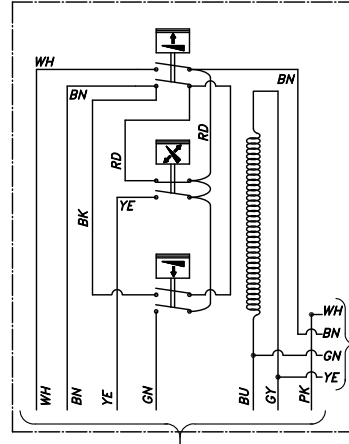
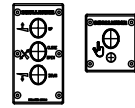
MECH.X

↑	R + H
↓	D
↙	R + S
↘	O + S

- WH-> R
- BN-> H
- GN-> D
- YE-> S
- GY-> O
- PK->
- BU-> - EARTH
- RD-> +12/24V
- EXTRA CTRL
- BK-> + 12/24V



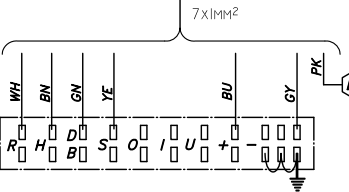
E0793.31.1.H



HYDR.

↑	R + H
↓	B + H
↙	R + S
↘	B + S

- WH-> R
- BN-> H
- GN-> B [B=D+O]
- YE-> S
- GY-> - EARTH
- PK-> +12/24V
- EXTRA CTRL
- BU-> + 12/24V



COLOUR CODES
DIN 47100

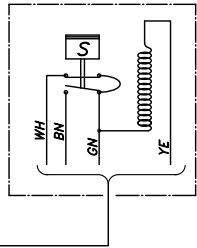
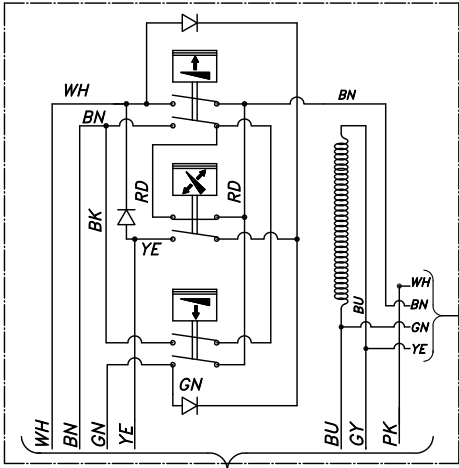
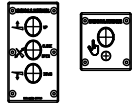
- 1=WH
- 2=BN
- 3=GN
- 4=YE
- 5=GY
- 6=PK
- 7=BU
- 8=RD
- 9=BK

EC = 24/12V
EXTRA CTRL.

Type : OAE031.Z + OAE034 ** 3+1 button exterior control box + heat resistor
Power pack : -
Valve : -

Plan N° : Sch_Extra-OAE031.Z-OAE034-2013-01

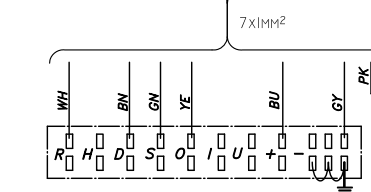
E0793.31.1.OMM3



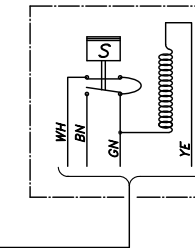
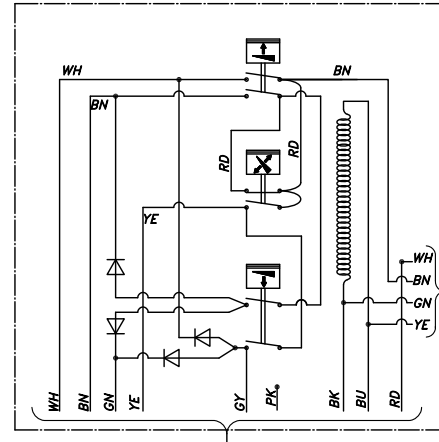
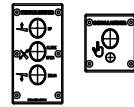
OMM3

↑	R + D
↓	D + S
↙	R + O
↘	O+R+S

- WH-> R
- BN-> D
- GN-> S
- YE-> O
- GY-> - EARTH
- PK-> +12/24V
- EXTRA CTRL
- BU-> + 12/24V



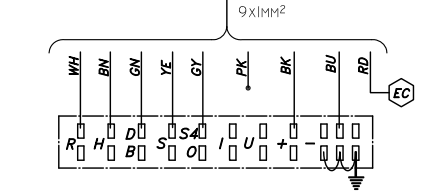
E0793.31.1.OMM4



OMM4

↑	R + H
↓	H + B
↙	R + S
↘	R + S + B + S4

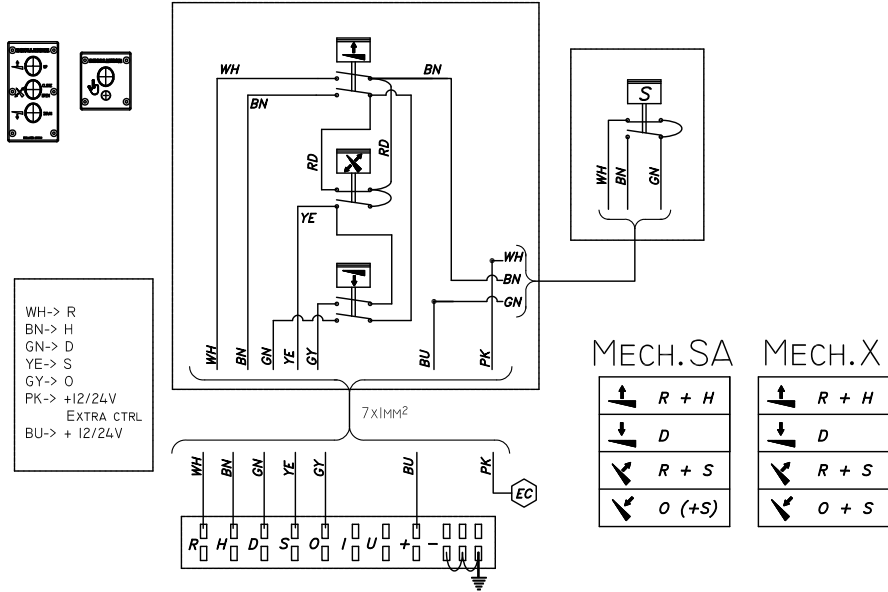
- WH-> R
- BN-> H
- GN-> B [B=D+O]
- YE-> S
- GY-> O (=S4)
- PK->
- BU-> - EARTH
- RD-> +12/24V
- EXTRA CTRL
- BK-> + 12/24V



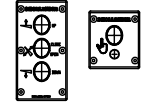
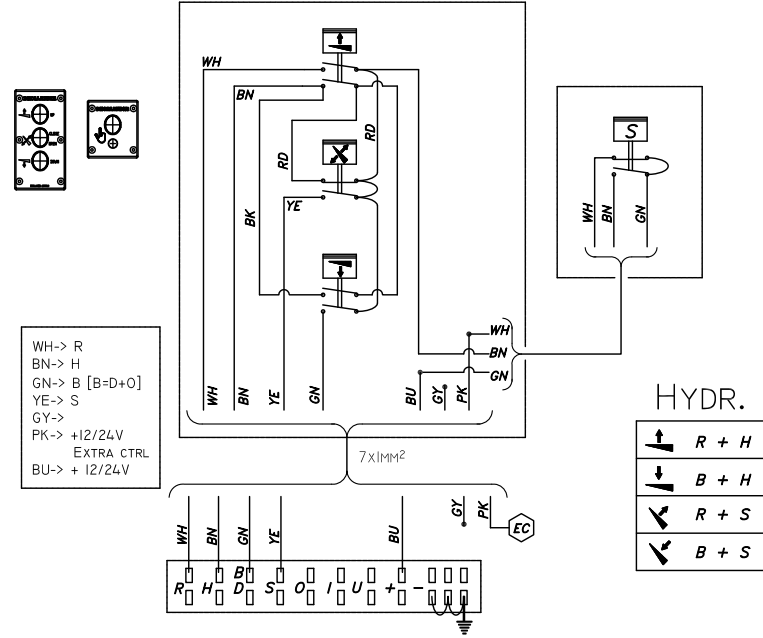
Date : 02/01/2014

OPTION OAE031.Z ~ 3+1 BUTTON CONTROL

E0793.31.0.M



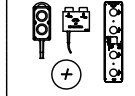
E0793.31.0.H



COLOUR CODES
DIN 47100

- 1=WH
- 2=BN
- 3=GN
- 4=YE
- 5=GY
- 6=PK
- 7=BU
- 8=RD
- 9=BK

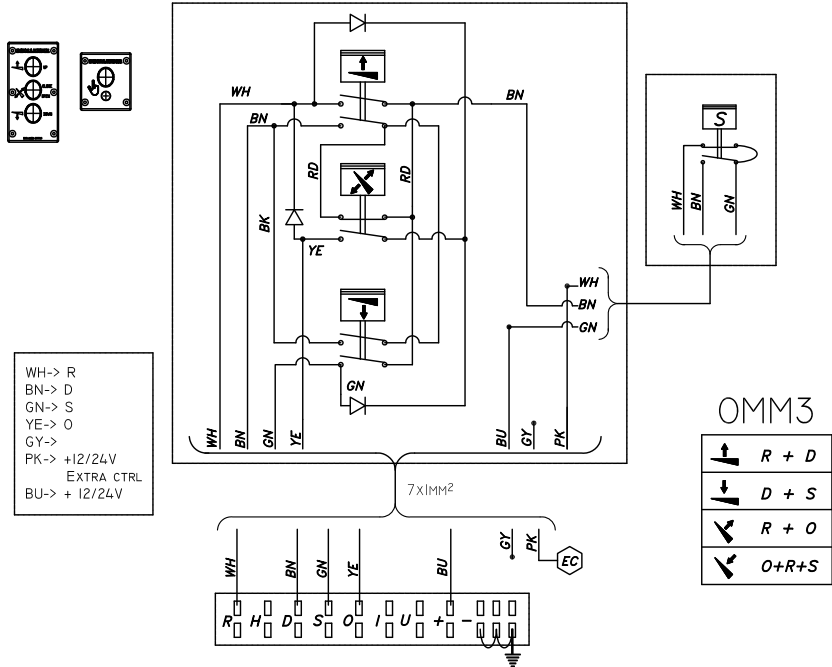
EC = 24/12V
EXTRA CTRL.



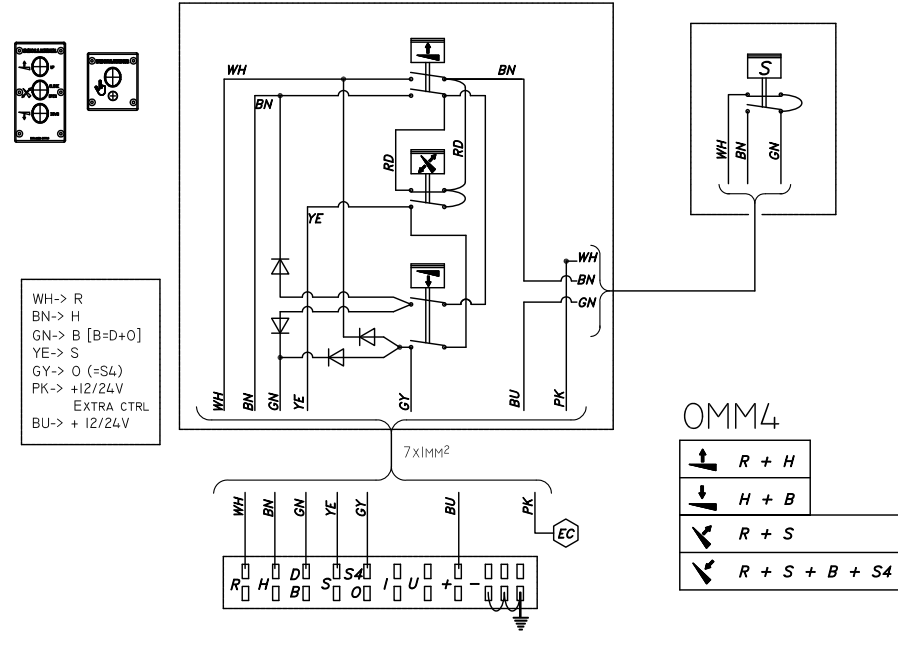
Type : OAE031.Z ** 3+1 button exterior control box
Power pack : -
Valve : -

Plan N° : Sch_Extra-OAE031.Z-2013-01
Date : 02/01/2014
DHOLLANDIA

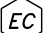
E0793.31.0.OMM3

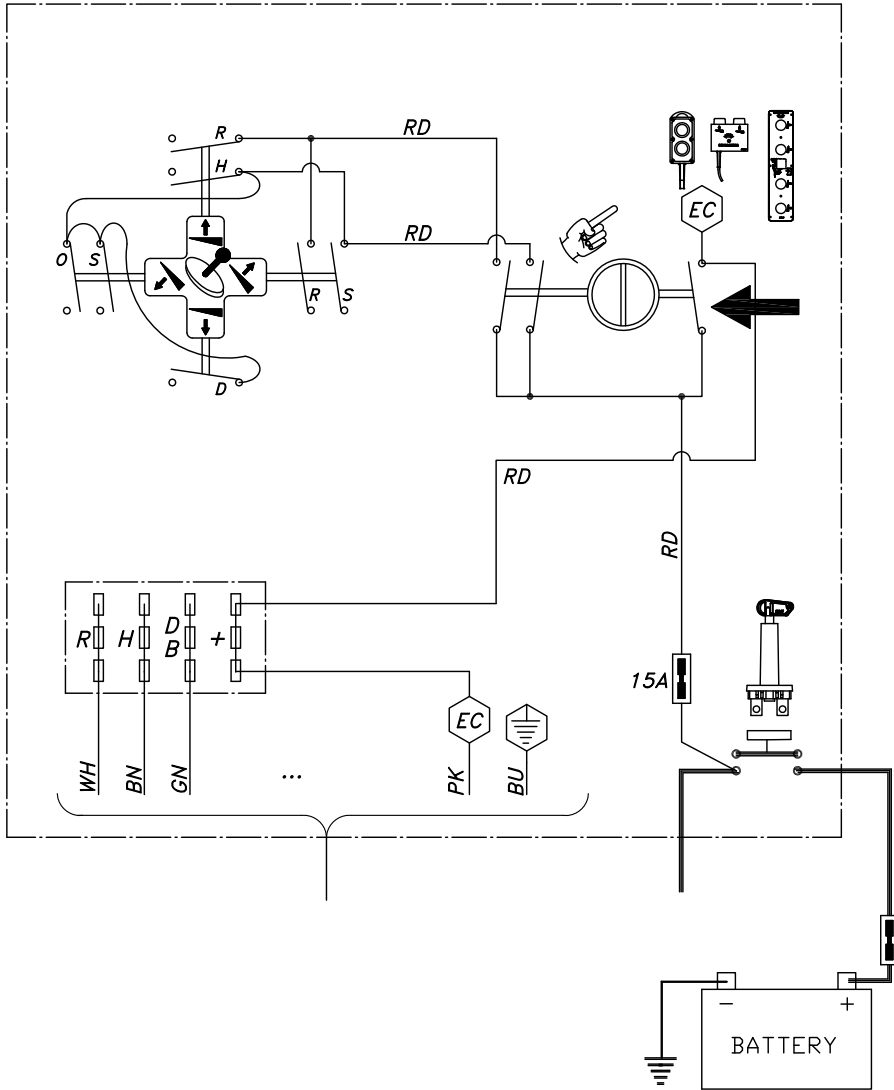


E0793.31.1.OMM4

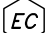


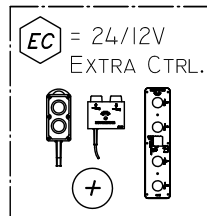
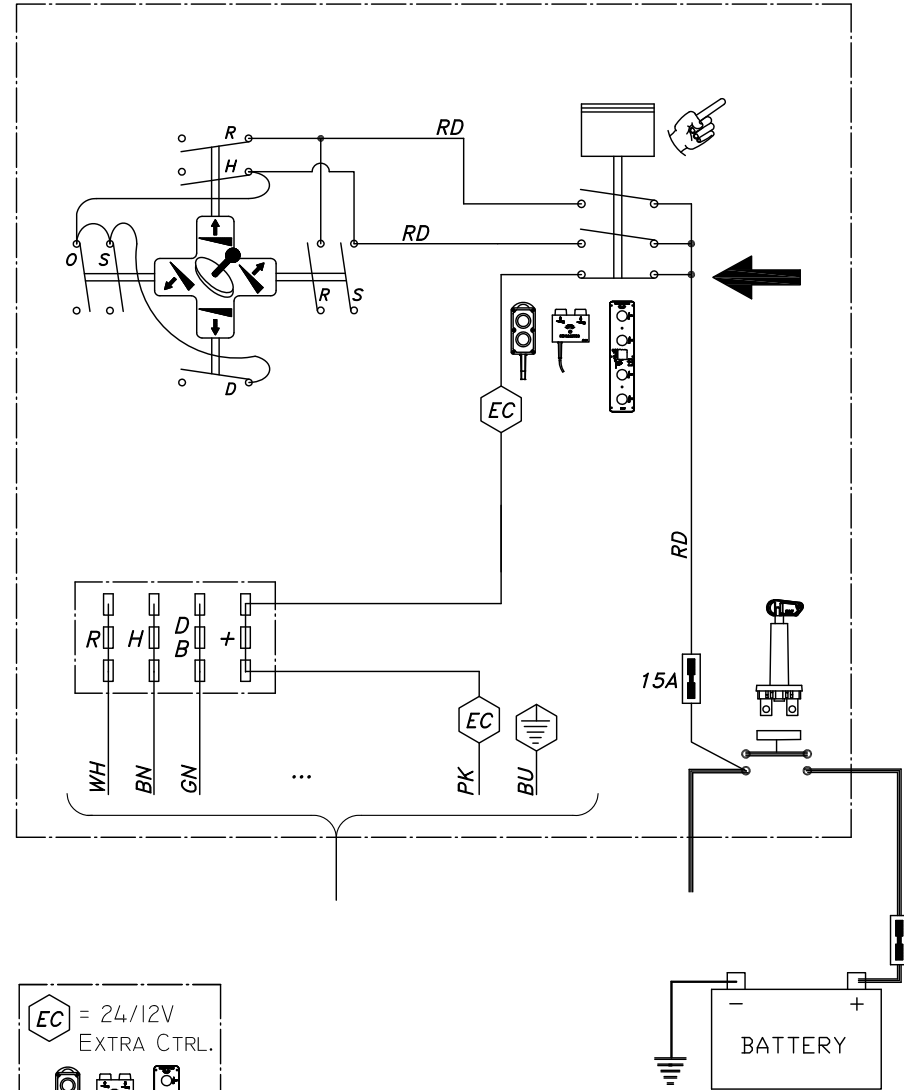
EXTERIOR CONTROL BOX OAE030.BT

 = NO CONTACT



EXTERIOR CONTROL BOX OAE030.BP

 = NC CONTACT

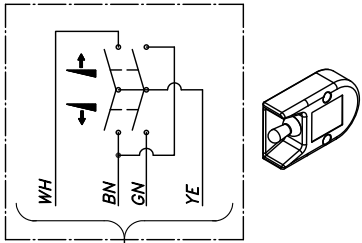


Type : *Difference between control boxes with T button or P button*
 Power pack : *n.a.*
 Valve : *n.a.*

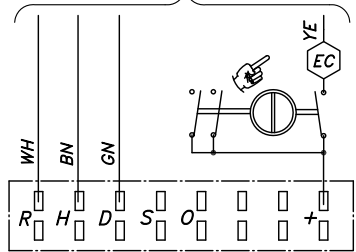
Plan N° : *Sch_Extra-convert OAE030.BT to OAE030.BP-2013-01* Date : *26/12/2013*



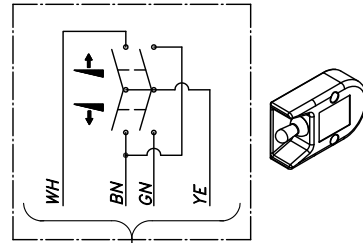
OPTION OAE015 ~ TOGGLE SWITCH CONTROL



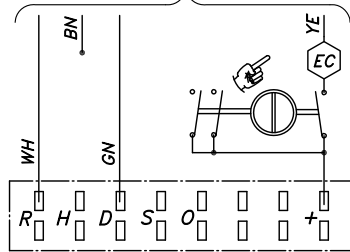
4x1mm² = E0075



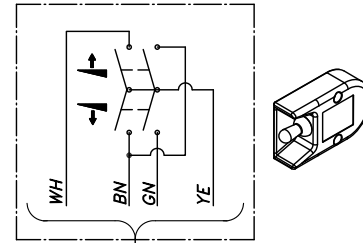
MECH.SA / MECH.X



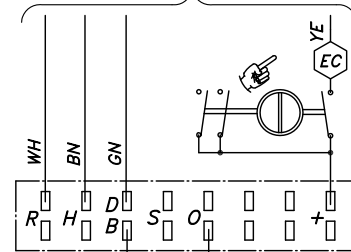
4x1mm² = E0075



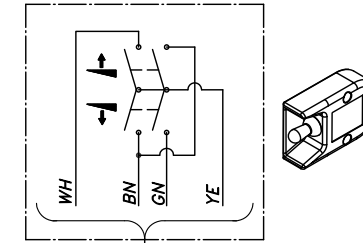
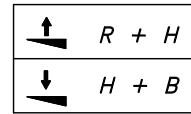
MECH.J



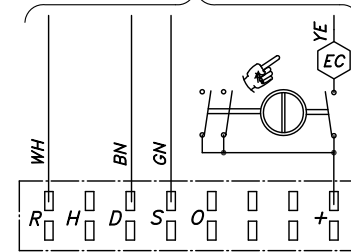
4x1mm² = E0075



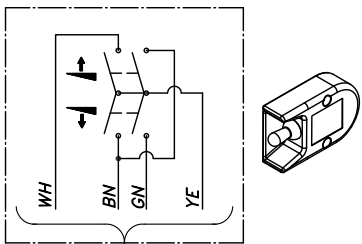
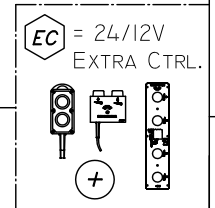
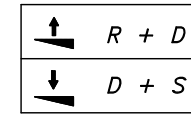
HYDR. / OMM4



4x1mm² = E0075

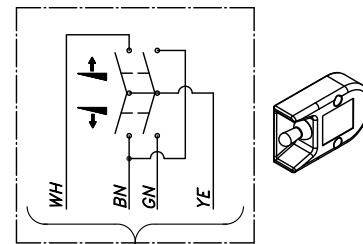
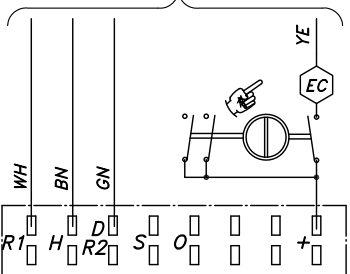
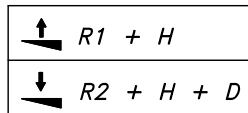


OMM3



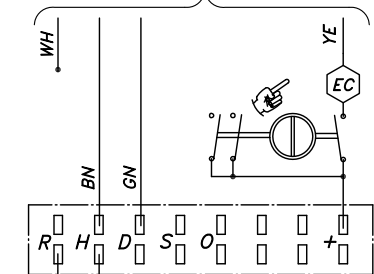
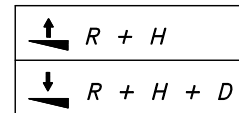
4x1mm² = E0075

DADI DH-RM.25
0AH025 - DA DOWN

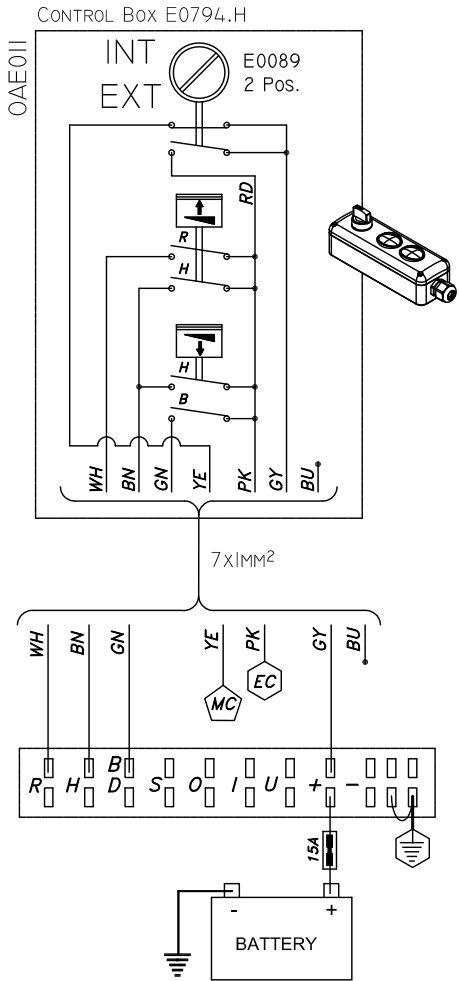


4x1mm² = E0075

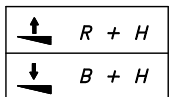
DAD2 DH-RC.15
0AH025 - DA DOWN



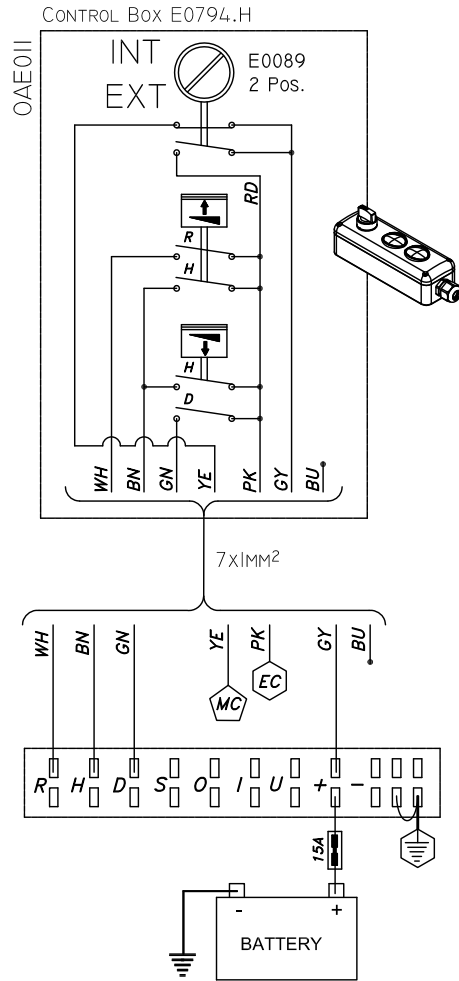
OPTION OAE011 ~ 2-BUTTON CTRL + CHANGE-OVER SWITCH



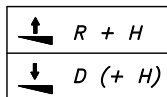
HYDR.
OMM4



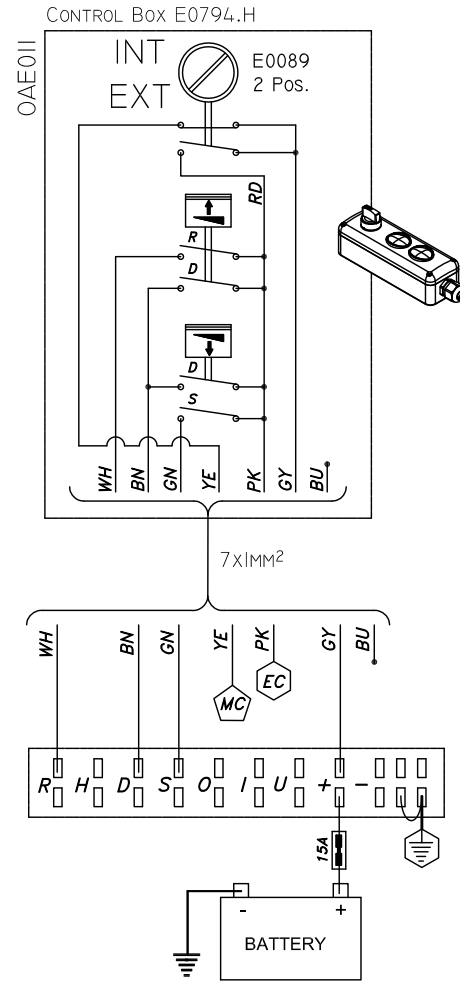
WH-> R
BN-> H
GN-> B [B=D+O]
YE-> + MAIN CTRL.
GY-> +12/24V
PK-> + 2° EXTRA CTRL.
BU->



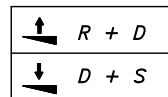
MECH.X
MECH.SA



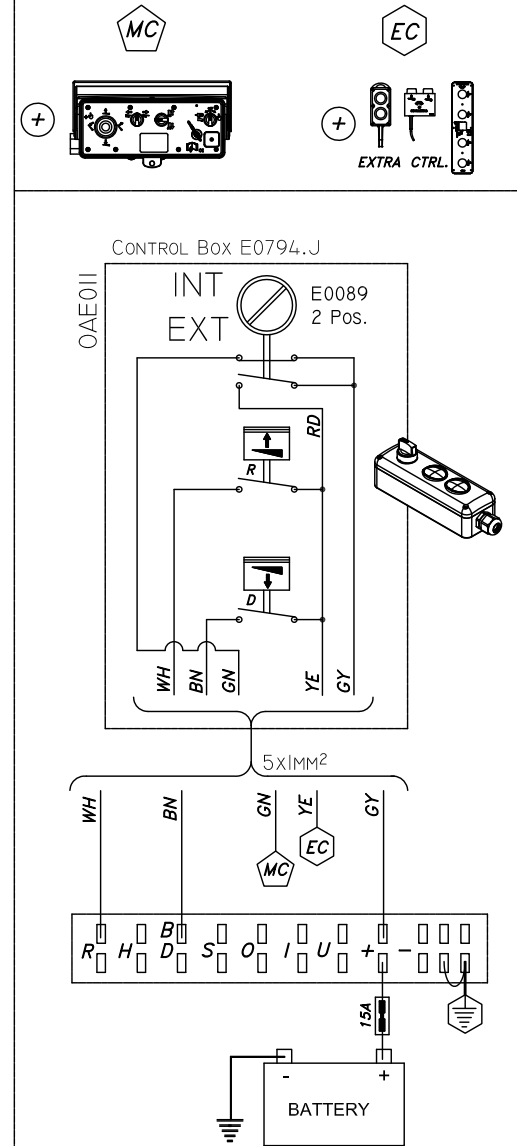
WH-> R
BN-> H
GN-> D
YE-> + MAIN CTRL.
GY-> +12/24V
PK-> + 2° EXTRA CTRL.
BU->



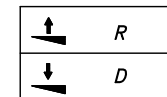
OMM3



WH-> R
BN-> D
GN-> S
YE-> + MAIN CTRL.
GY-> +12/24V
PK-> + 2° EXTRA CTRL.
BU->



MECH.J



WH-> R
BN-> D
GN-> + MAIN CTRL
YE-> + 2° EXTRA CTRL.
GY-> +12/24V

Type : OAE011 ** 2-button interior control + selection change-over switch

Power pack : -

Valve : -

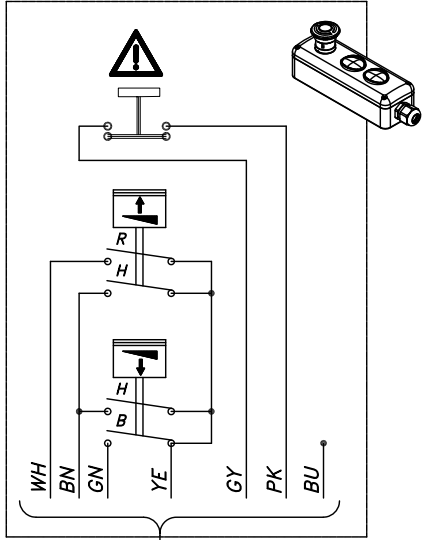
Plan N° : Sch_Extra-OAE011-2013-01

Date : 03/07/2014

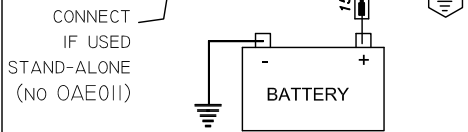
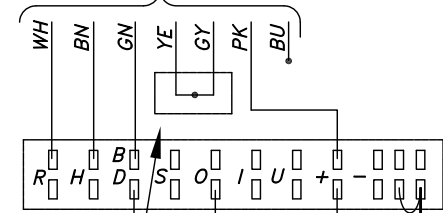
DHOLLANDIA

OPTION OAE010 ~ 2-BUTTON CTRL + EMERGENCY STOP

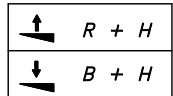
CONTROL Box E0796.H



7x1mm² L=4M

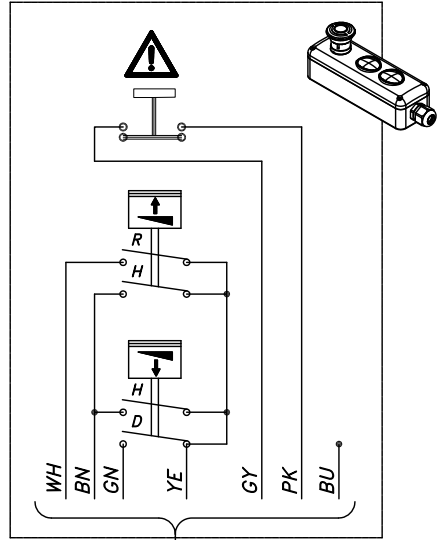


HYDR.
OMM4

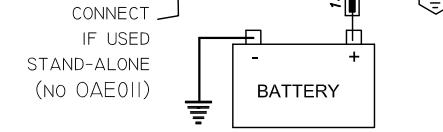
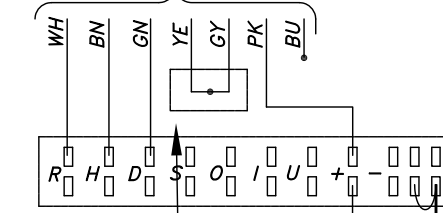


WH-> R
BN-> H
GN-> B [B=D+O]
YE-> +12/24V (via OAE011)
GY-> +12/24V (via OAE011)
PK-> +12/24V
BU-> ...

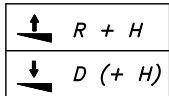
CONTROL Box E0796.H



7x1mm² L=4M

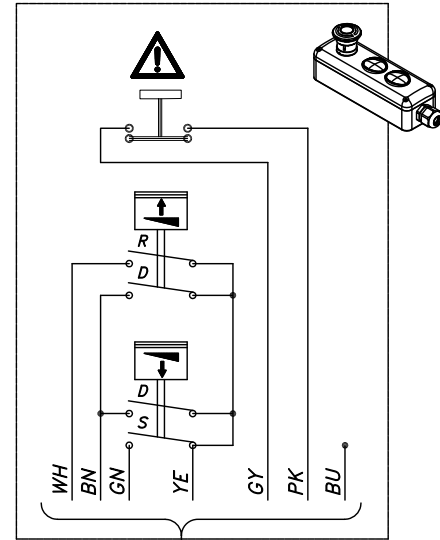


MECH.X
MECH.SA

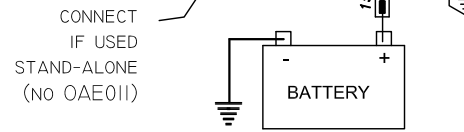
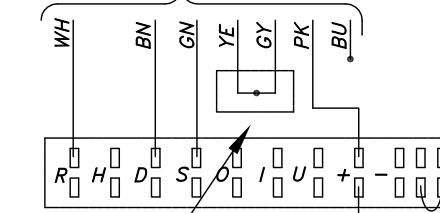


WH-> R
BN-> H
GN-> D
YE-> +12/24V (via OAE011)
GY-> +12/24V (via OAE011)
PK-> +12/24V
BU-> ...

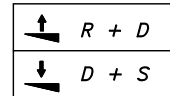
CONTROL Box E0796.H



7x1mm² L=4M

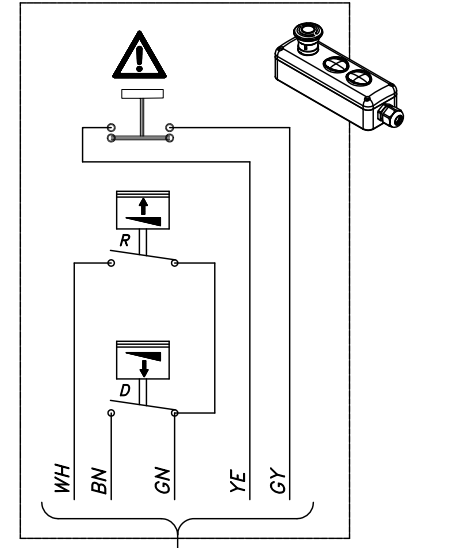


OMM3

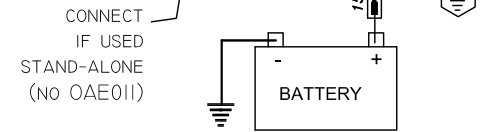
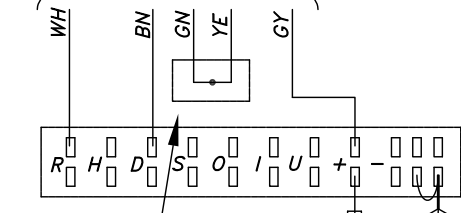


WH-> R
BN-> D
GN-> S
YE-> +12/24V (via OAE011)
GY-> +12/24V (via OAE011)
PK-> +12/24V
BU-> ...

CONTROL Box E0796.J



5x1mm² L=4M



MECH.J



WH-> R
BN-> D
GN-> +12/24V (via OAE011)
YE-> +12/24V (via OAE011)
GY-> +12/24V

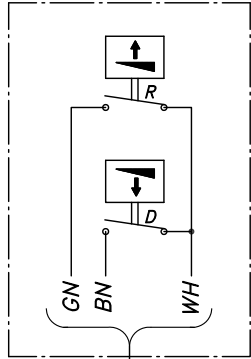
Type : OAE010 ** 2-button exterior control + emergency stop
Power pack : -
Plan N° : Sch_Extra-OAE010-2013-01

Valve : -

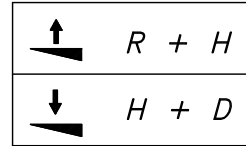
Date : 02/01/2013

OPTION OAE005 ~ FLAT INTERIOR CONTROL

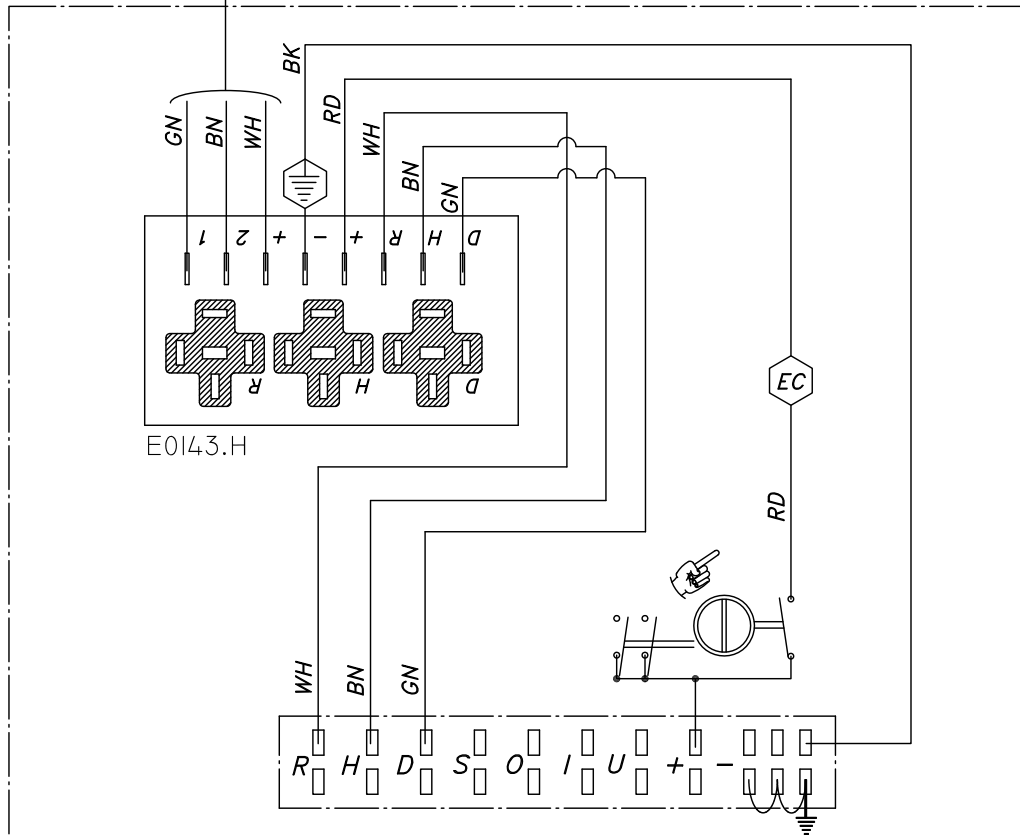
OAE005 = E0122



3x1MM²



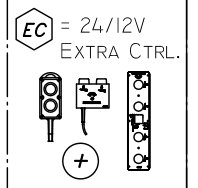
EXTERIOR CONTROL BOX



E0143.H

COLOUR CODES
DIN 47100

- 1=WH
- 2=BN
- 3=GN
- 4=YE
- 5=GY
- 6=PK
- 7=BU
- 8=RD
- 9=BK



Type : OAE005 ** Flat 2-button interior control E0122 + E0143

Power pack : -

Valve : -

Plan N° : Sch_Extra-OAE005-2013-01

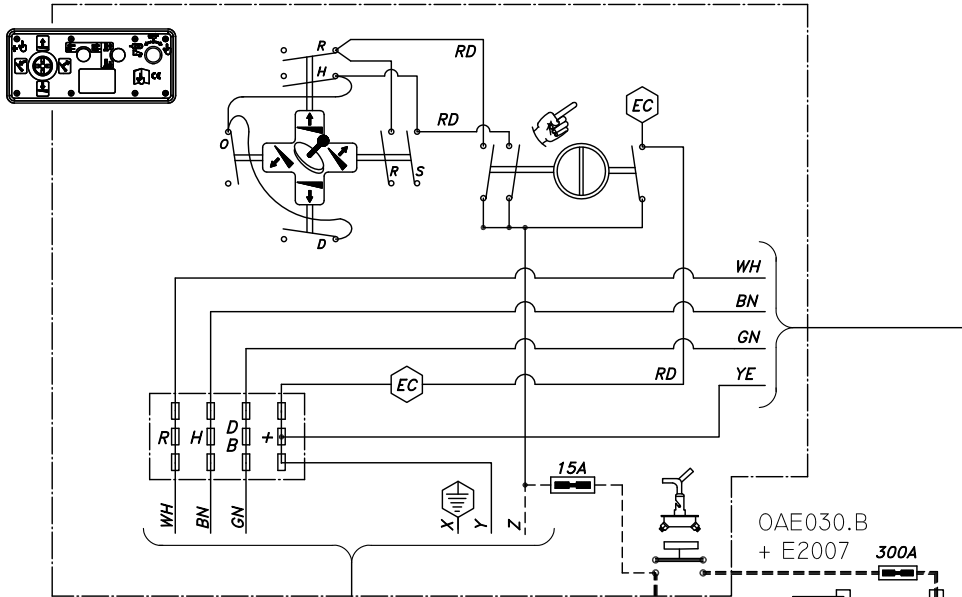
Date : 02/01/2014

DHOLLANDIA



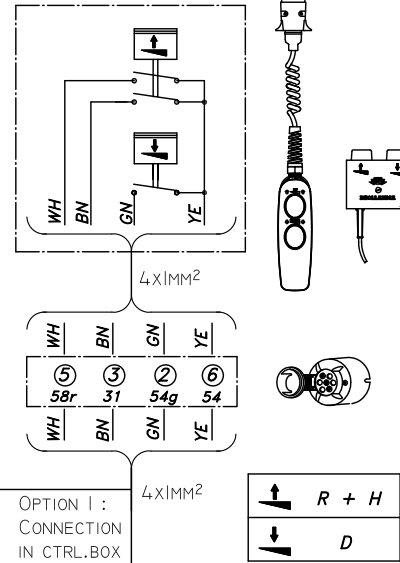
CONNECTION OF OAE001 / OAE003 ON SAFETY BUTTON IN CONTROL BOX

EXTERIOR CONTROL BOX REF. E...



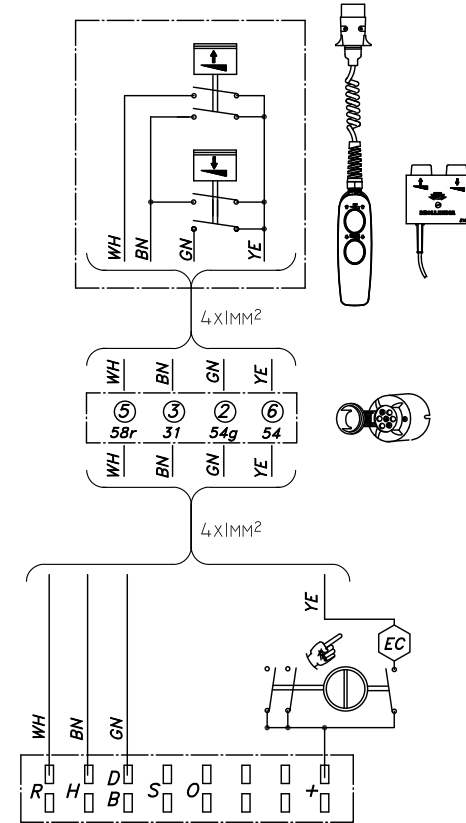
MECH.X / SA

EXTRA CONTROL E0783.M



HYDR.

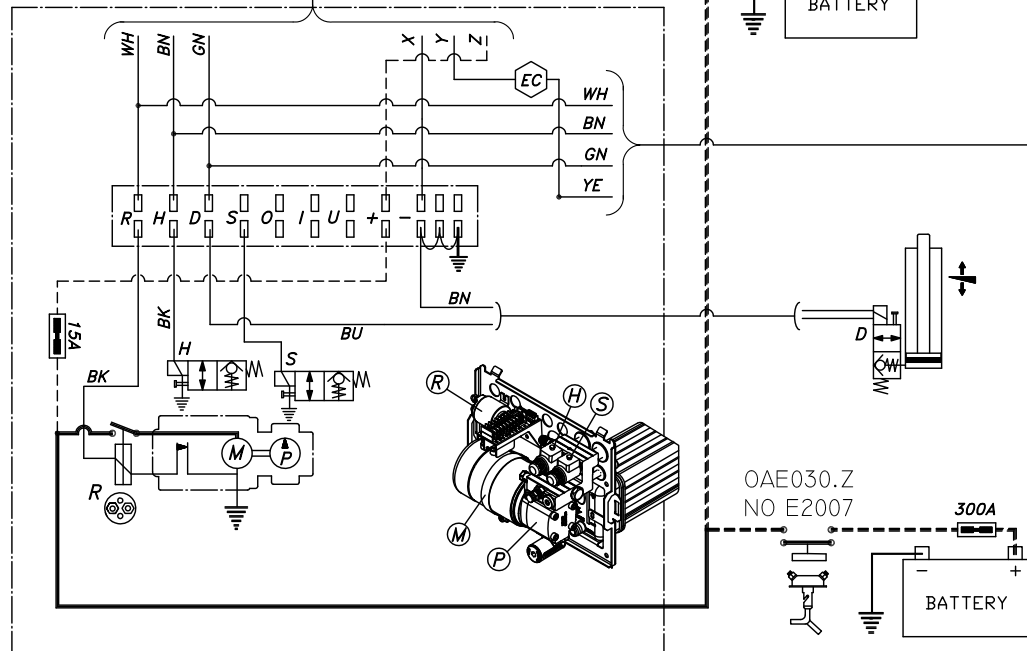
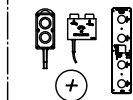
EXTRA CONTROL E0783.H



COLOUR CODES
DIN 47100

- 1=WH
- 2=BN
- 3=GN
- 4=YE
- 5=GY
- 6=PK
- 7=BU
- 8=RD
- 9=BK

EC = 24/12V
EXTRA CTRL.



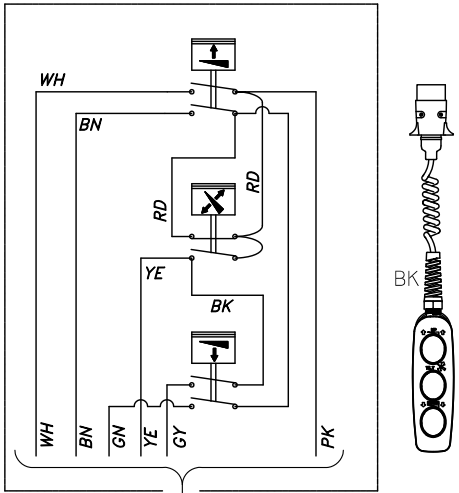
OAE030.Z
NO E2007

Type : Connection of 2-BTN wander lead OAE001 & fixed interior control OAE003
Power pack : n.a.
Valve : n.a.

Plan N° : Sch_Extra_connect OAE001-OAE003-2013-01
Date : 02/01/2014

OPTION OAE002 ~ 3-BUTTON WANDER LEAD

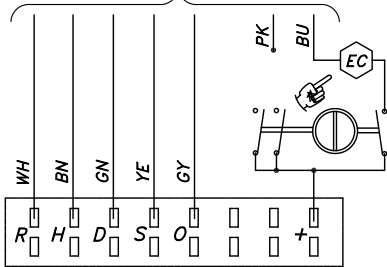
E0784.M



6x1mm² = E0257



7x1mm²

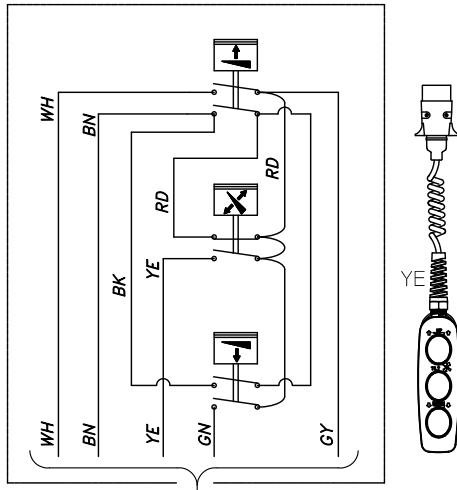


MECH.SA / MECH.X

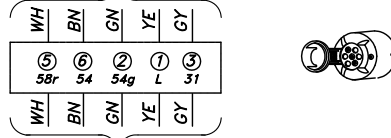
↑ R + H	↘ R + S	↙ R + S
↓ D	↘ O	↙ O + S

BOTH MECH.SA MECH.X

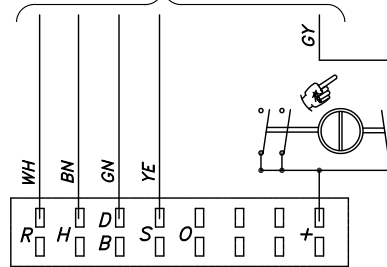
E0784.H



5x1mm² = E0256



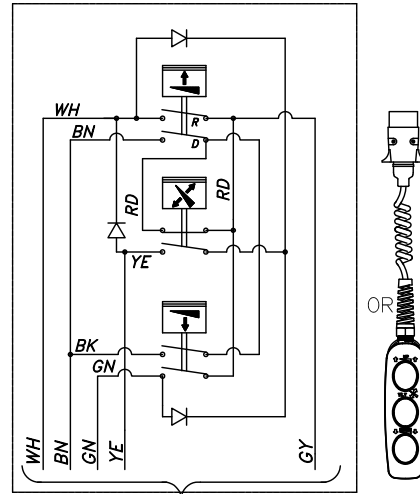
5x1mm²



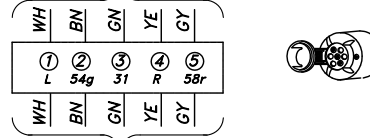
HYDR.

↑ R + H	↘ R + S
↓ B + H	↘ B + S

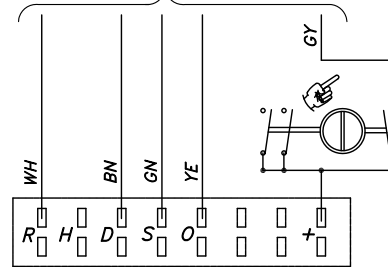
E0784.0MM3



5x1mm² = E0256



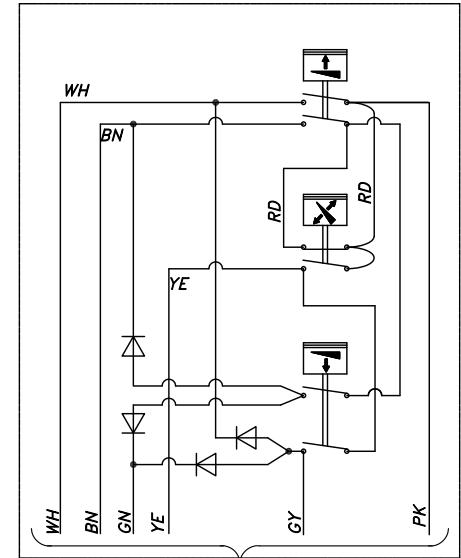
5x1mm²



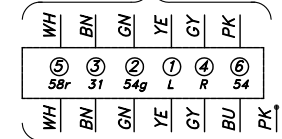
0MM3

↑ R + D	↘ R + O
↓ D + S	↘ O + R + S

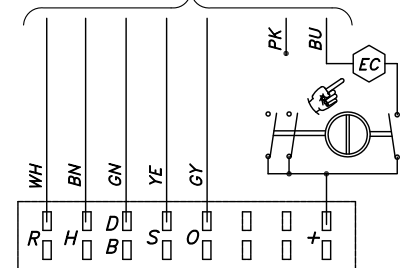
E0784.0MM4



6x1mm² = E0257



7x1mm²

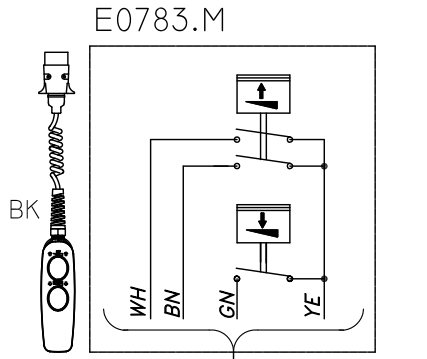


0MM4

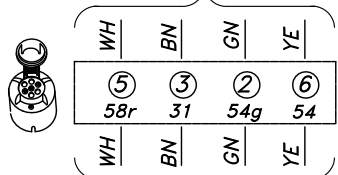
↑ R + H	↘ R + S
↓ H + B	↘ R + S + B + S4

Type : OAE002 ** 3-button wander leads with spiral cable
 Power pack : - Valve : -
 Plan N° : Sch_Extra-OAE002-2013-01

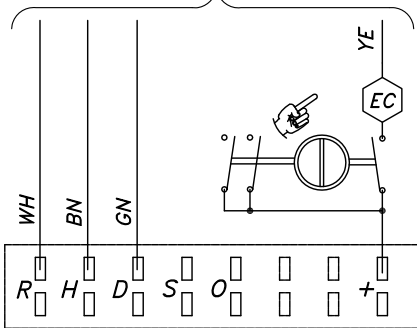
Date : 02/04/2014



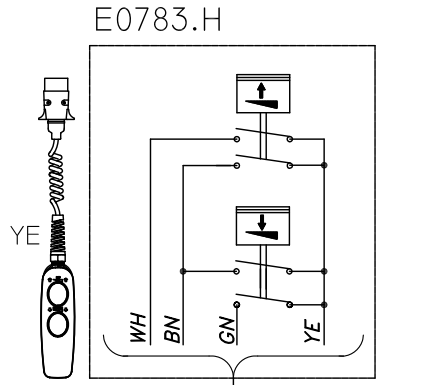
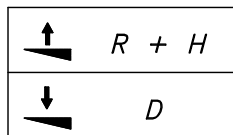
4x1MM² = E0075



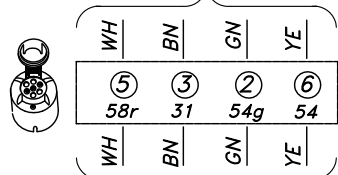
4x1MM²



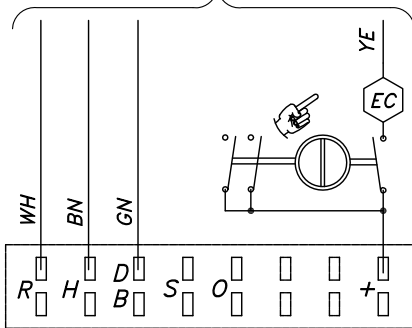
MECH.SA / MECH.X



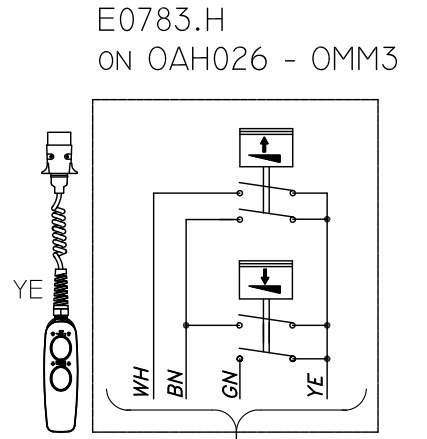
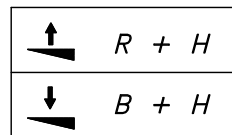
4x1MM² = E0075



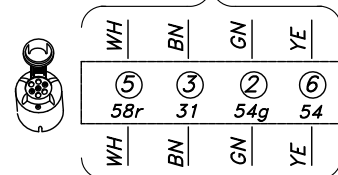
4x1MM²



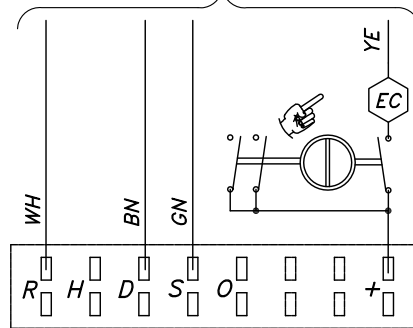
HYDR. / OMM4



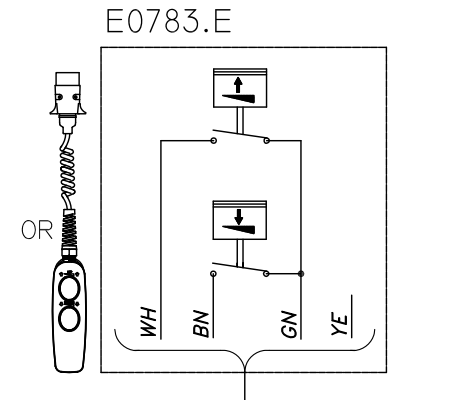
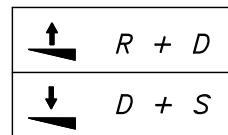
4x1MM² = E0075



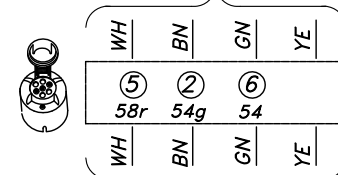
4x1MM²



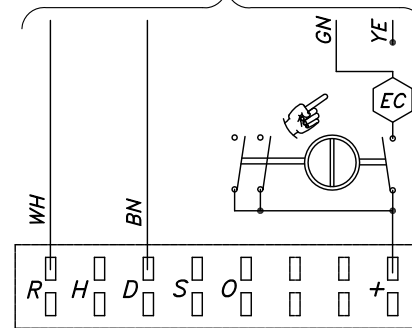
OMM3



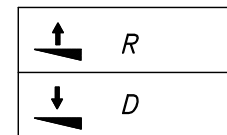
4x1MM² = E0075



4x1MM²



MECH.J



EC = 24/12V
EXTRA CTRL.

